

KASIGAU CORRIDOR REDD+ PROJECT

WILDLIFE WORKS CARBON, KENYA



Lessons
Learned from
Project Based
REDD+



OUTLINE

- **Wildlife Works history**
- **Kasigau Corridor REDD+ Project**
- **Lessons learned**
- **Collaboration**
- **Criteria for Successful REDD+**
- **Future Considerations**

**So, who is
Wildlife
Works?**

**WILDLIFE
WORKS**



WILDLIFE WORKS

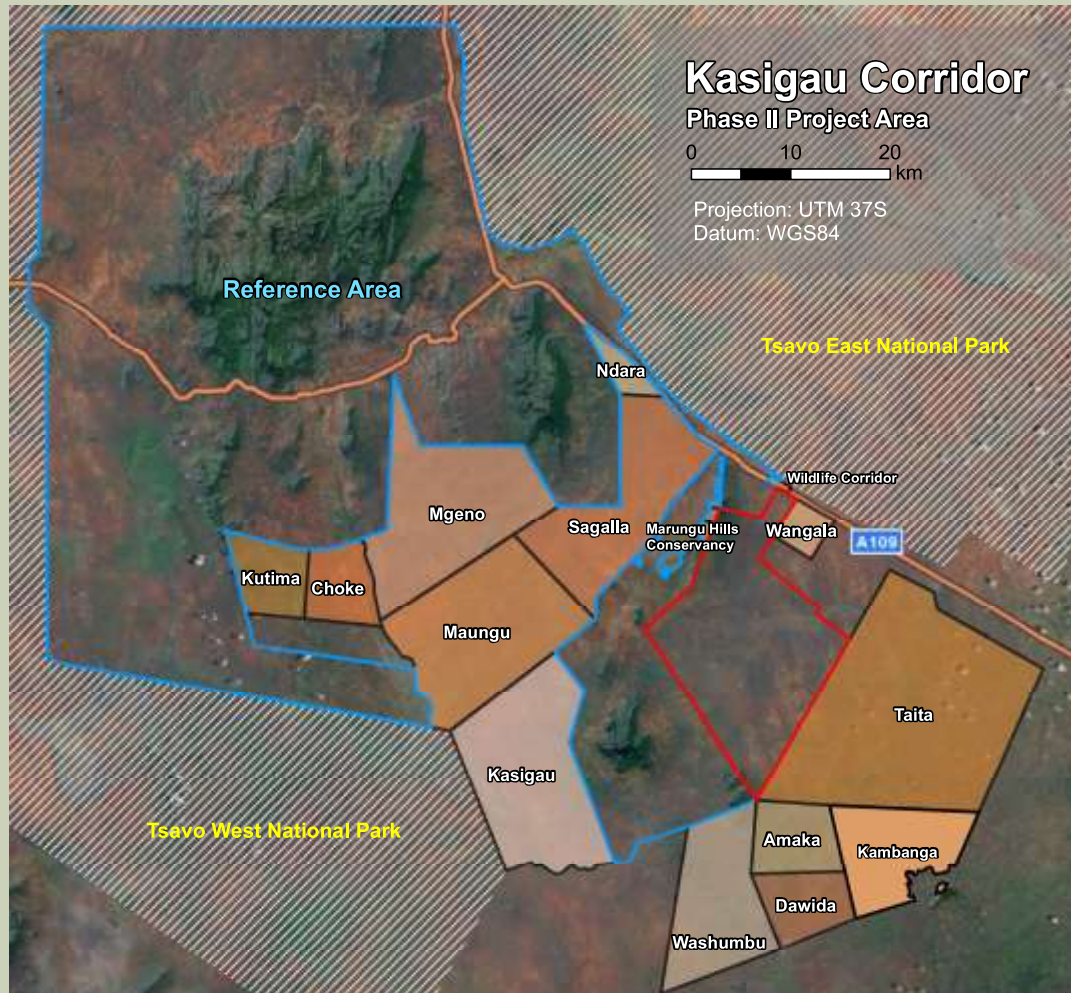
- A for-profit company
- Based in Kenya and the USA pioneered the use of REDD+ carbon credits (VERs)
- Develops partnerships for success
- World's leading REDD project development and management company
- Private-sector investment
- Social enterprise
- Expansion



THE KASIGAU CORRIDOR REDD+ PROJECT: THE BASELINE SCENARIO



KASIGAU CORRIDOR MAP



Phase II

Project Area: 173,616 ha

Reference Area

Total Area: 324,012 ha

- Phase II Ranches
- Reference Area
- Rukinga Ranch
- Natnl. Parks



OPERATIONALIZATION OF REDD+

In the Beginning...

- ‘self-sustaining’, requires a fungible asset
- Methodology and baselines
- Participatory Rural Appraisals (PRA) and Theory of Change Analysis
- Collaborative approach with KFS, KWS etc.
- VCS and CCBA, ensuring safeguards are met.

Ongoing...

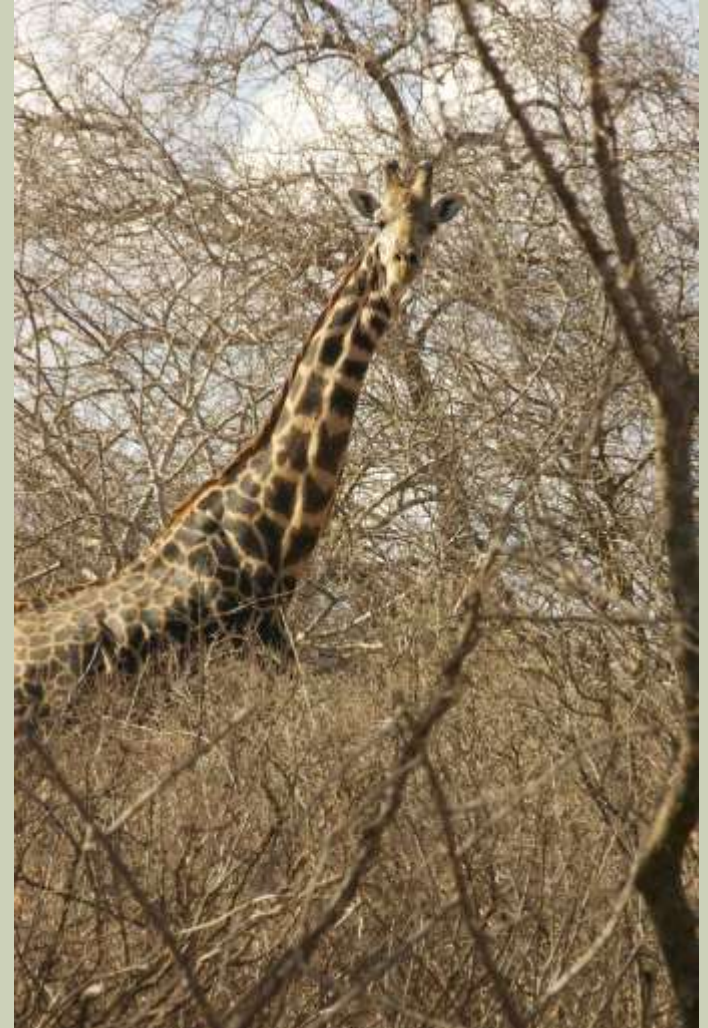
- MRV
- Leakage mitigation
- Integration into the national REDD+ program

CO-BENEFITS

- **Social co-benefits associated with pro-poor development**
- **Biodiversity/Ecosystemic co-benefits, i.e., enhanced biodiversity protection and, soil and water quality and availability**

BIODIVERSITY CO-BENEFITS

- Measurable, documented and verifiable increases in indicator species (HCV species)
- Landscape recovery and natural regeneration
- Farmer-managed natural regeneration in denuded areas through re-forestation program efforts



SOCIAL CO-BENEFITS – ALTERNATIVE LIVELIHOODS



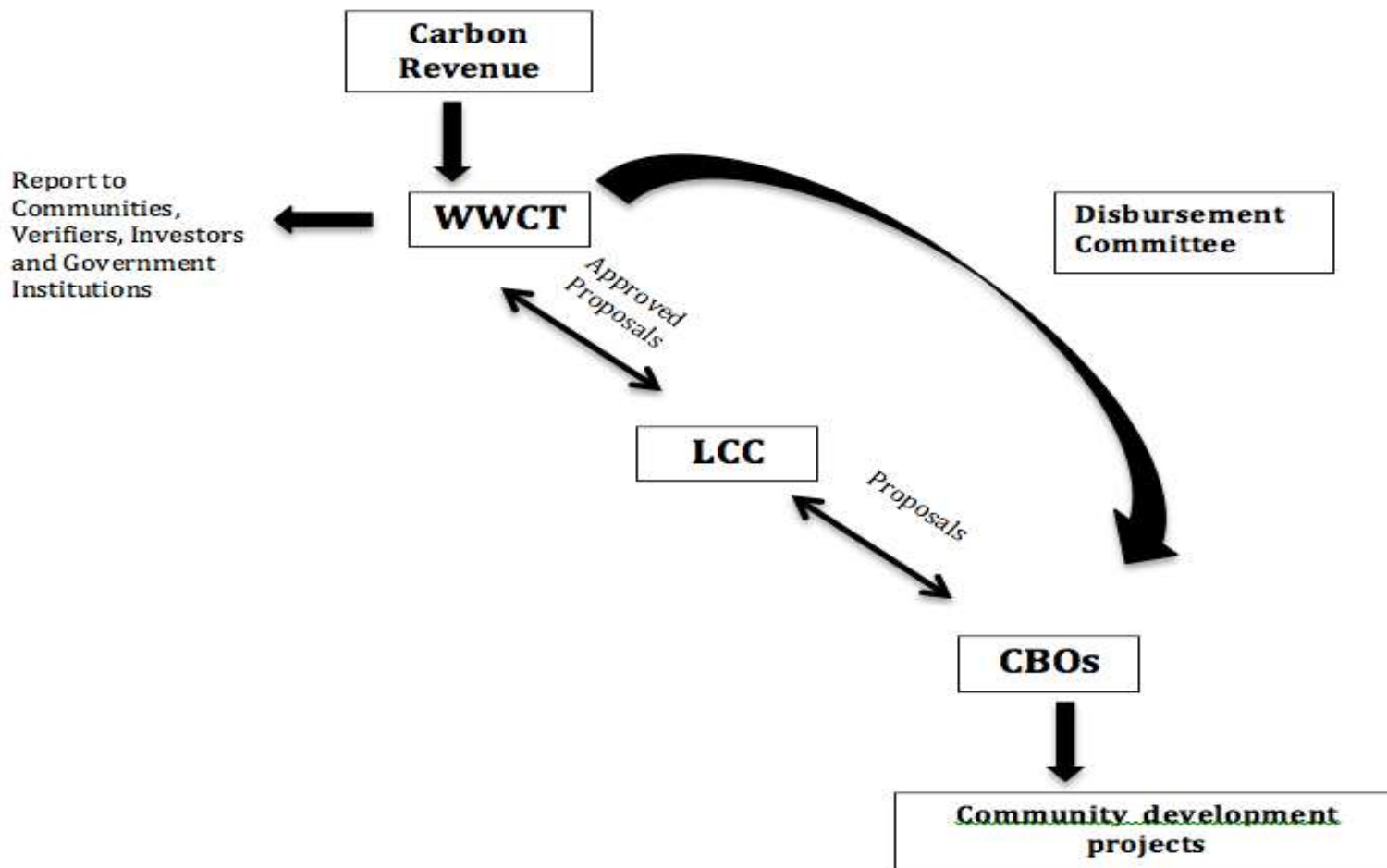
-
- A photograph of a classroom setting. A male teacher in a white t-shirt and blue jeans stands on the left, pointing towards a screen. A group of young students, mostly girls in pink and blue uniforms, are seated at wooden desks, looking towards the teacher. The room has a corrugated metal roof and a white wall.



CO-BENEFIT DISTRIBUTION MECHANISM

- Carbon revenue divided into three parts
- Community funds managed through the Wildlife Works Carbon Trust (WWCT)
- Trust supporting projects, focusing on
 - *Income-generating activities*
 - *Education*
 - *Health and sanitation, and*
 - *Infrastructure development*
- Transparency is key

CO-BENEFIT DISTRIBUTION MECHANISM



CO-BENEFIT DISTRIBUTION MECHANISM

- WWCT Disbursement Committee
 - *Receive accepted proposals and disburse funding*
- LCCs
 - *Receive and evaluate proposals from CBOs*
- CBOs
 - *Oversee implementation of projects*



WWCT: ACHIEVEMENTS

- More than 1000 students receiving bursaries from carbon revenue
- LCCs allocated between 40-50% of community funds towards school bursaries
- ‘Collective Good’ projects
 - Water catchments
 - Water tanks
 - Infrastructure renovation



COLLABORATION

- Work in close partnership with the *Kenya Forest Service (KFS)* and *Kenya Wildlife Service (KWS)*
- Wholly integrated into Kenya's National REDD Strategy formulation process
- Close collaboration with Kenya's REDD+ focal point in partnership development



DOES THE KASIGAU CORRIDOR MEET THE CRITERIA FOR SUCCESSFUL REDD+?

- Effectiveness
- Efficiency
- Equality

(Barbier & Tesfaw, 2012)



FUTURE OUTLOOK

- **Nesting REDD Projects into national and sub-national programs**
- **Leakage mitigation activities will gain prominence, especially with JNRI**
- **Sovereign funds will add new stability to the market for REDD+ credits**
- **REDD+ will be seen as a reality – not a vague dream**

NEW PROJECTS

- Lac Mai Ndombe REDD+ Project
 - Validated and Verified project with Gov. of DRC as major partner
- Chyulu Hills REDD Project
 - Consortium of public institutions and private sector actors
- Proposed Jurisdictional Pilot Program in Kenya's Coast Region
 - Provide pilot environment for Kenya's national REDD+ policies, activities, and monitoring methods

LESSONS LEARNED

In Summary, successful REDD+ projects need:

- Enabling legal environment and institutional networks
- Adaptive Co-management approaches
- Inter-generational social capital investment in a landscape
- Distribution Mechanism must be transparent and have community input/feedback
- Flexible forest financing from the **outset** is needed in order to achieve successful validation/verification of projects

THANK YOU AND QUESTIONS?

