



FCPF Technical Advisory Panel

Liberia DRAFT RPP: TAP Comments & Recommendations

March 23-25, 2011

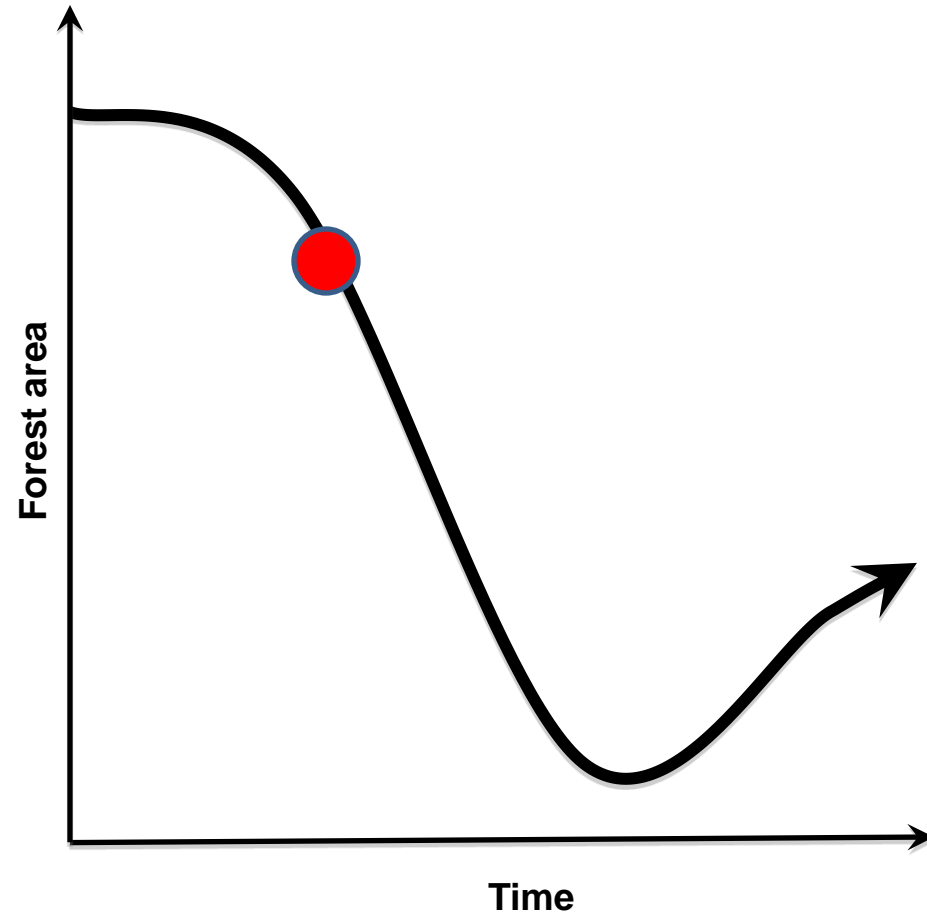
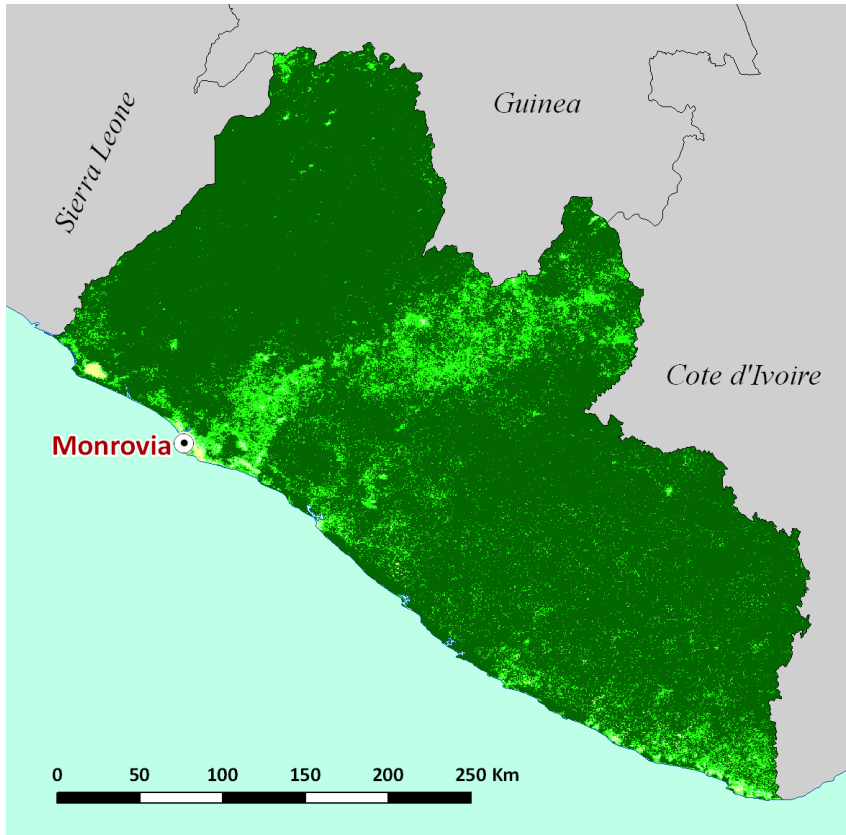
FCPF Participants Committee
Dalat, Vietnam

Juergen Blaser for the Liberia TAP team



Liberia: highest forested country in West Africa

Between 4.3 and 5.3 million ha of forests, 2.4 million ha of closed (high forest), about 9 million hectares of vegetation cover, pre-dominance of secondary vegetation



Overall Summary : Strengths of the RPP

The TAP assessed a **clearly formulated and well present Draft R-PP** it find:

- R-PP proposal is based on an extensive dialog with stakeholders throughout the country
- A plan for **stakeholder consultations that tackle the critical issues in respect to forest use** are considered as main tasks in the R-PP implementation
- Comprehensive and **feasible REDD+ management and implementation arrangements**, straight forward and adapted to the immediate needs
- A REDD+ strategy that clearly identifies the areas of focus (forestry, agro/forest link and (bio)energy) though they still need some more consideration
- Well elaborated components 3 and 4 (Reference Level and MRV), even though better links with the proposed REDD+ strategy still needs to be done

Areas that need further work and recommendations

(I)

- Revised R-PP needs careful editing to ensure clarity and avoid inconsistency
- Define better the responsibilities in respect to R-PP implementation. One possibility is to identify the main tasks for the primary implementation bodies (e.g. RTWG) (1a)
- Improve the consistency between the elements under **component 2**, including:
 - thorough analyses of forest governance and land tenure issues
 - more clarity on proposed strategies (e.g. in forest management, in agriculture/rural development)
 - a more focused implementation framework of the proposed REDD+ strategy (tackle the relevant issues in respect to REDD+) and
 - demonstrate or show clear links between subcomponents 2a, 2b and 2c, but also with component 3 and 4

Areas that need further work and recommendations

(II)

- The REDD+ strategy currently is just a list of sub-sectors for which there is a need to identify specific programmes and policies:
 - Further develop and expand the relevant mitigation approaches listed under the forest sector (e.g. include enhancement of sinks and other forestry options) (2b)
 - Elaborate more on the options proposed in the agriculture sub-sectors, (e.g. explain more in detail the main approach of replacing shifting cultivation by semi-permanent agriculture) (2b, 2c)
 - Demonstrate that proposed activities are relevant from a carbon perspective (2b)
- Include a better description of the proposed monitoring of key non-carbon variables within the MRV system (4b)
- Carefully elaborate the budget for each component and reflect on the real financial needs for each component (5)
- **Clearly focus on capacity building targets** in the key areas that would enable Liberia to develop its Readiness to REDD+

Overall Summary: TAP on 17 March R-PP

Component **1a** *largely meets the standard*
 1b *largely meets the standard*
 1c *largely meets the standard*

Component **2a** *partially meets the standard*
 2b *partially meets the standard*
 2c *partially meets the standard*
 2d *meets the standard*

Component **3** *largely meets the standard*

Component **4a** *partially meets the standard*
Component **4b** *partially meets the standard*

Component **5** *largely meets the standard*

Component **6** *largely meets the standard*