

FCPF Technical Advisory Panel

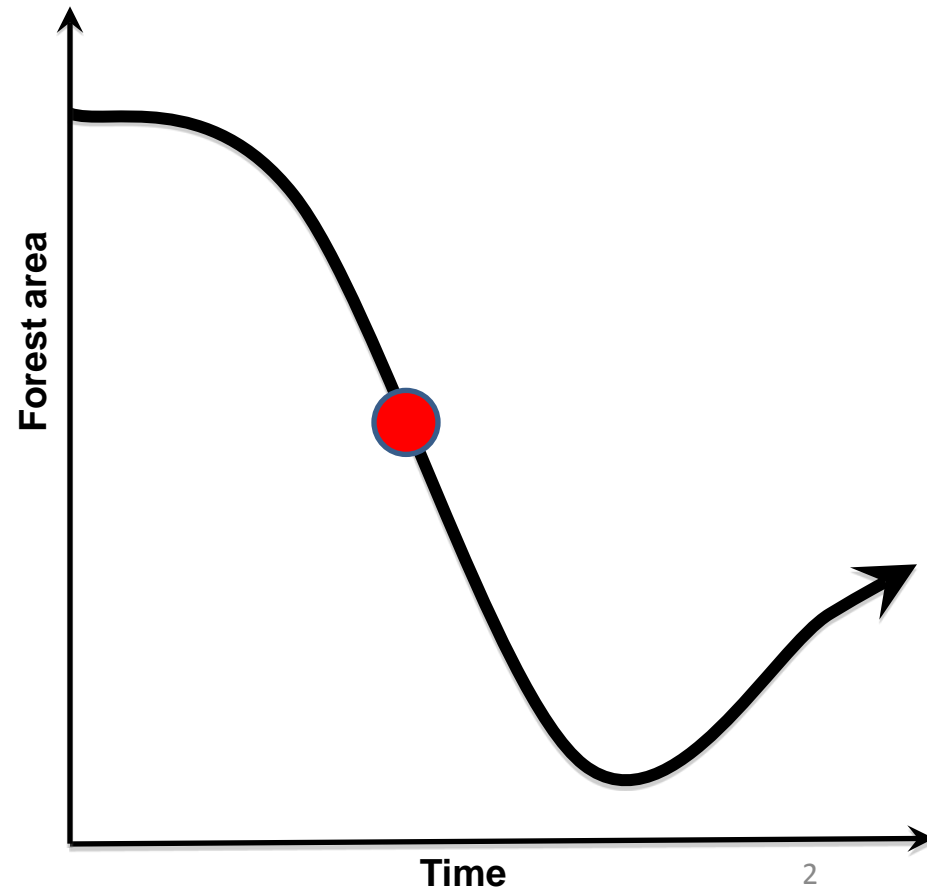
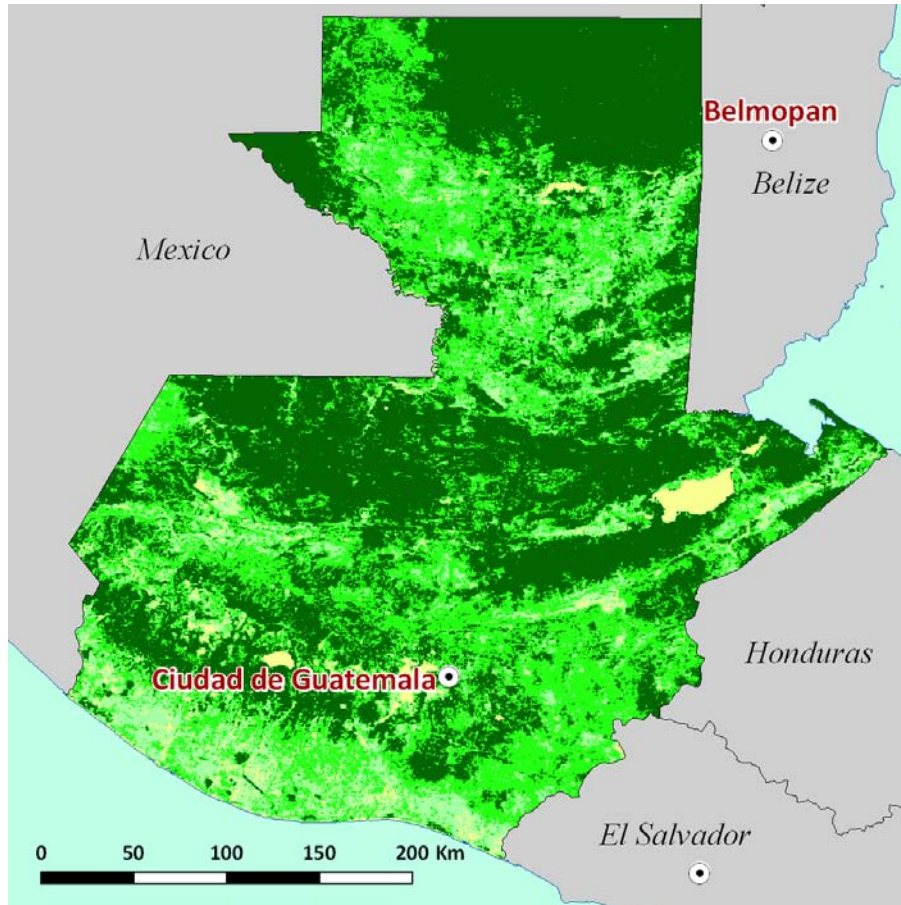
Guatemala Draft RPP: TAP Comments & Recommendations

**October 18, 2011
FCPF Participants Committee
10th meeting, Berlin, Germany**

**For the Guatemala TAP team
Tomás Schlichter and Juergen Blaser**

Guatemala: well endowed with forests, but high deforestation rate

Between 3.5 and 4.5 million ha of forests, 1.85 million ha of closed (high forest), about 1.1 million hectares of production forest and 1.2 million hectares of protection forest; Forest cover loss >1%



Overall Summary : Strengths of the RPP

The TAP assessed a clearly formulated and well presented Draft R-PP:

- R-PP proposal is based on an extensive dialog with stakeholders throughout the country → *Trustful attempt to make the process transparent, open and inclusive.*
- Consultation plan is comprehensive and solid. It includes main stakeholders and considers the critical issues in respect to forest use.
- Comprehensive and feasible REDD+ management and implementation arrangements, adapted to the short and medium term needs.
- Capacity needs are hinted at throughout R-PPs, but are seldom formally funded or listed in work plans.
- Well justified approach to work at the level of clearly defined zones in the country and then to integrate the results of these zones at a national level (nested approach).

Further work

- ❑ Better description composition and distribution of indigenous groups, and also of other stakeholders eg. private sector involved in the process.
- ❑ Further explanation about the deforestation drivers at the regional level as well as sub-national options to decrease deforestation would be welcomed.
- ❑ National as well sub-national Implementation Frameworks for the REDD+ Strategy better specified (component 2c)
- ❑ Identify institutions that will lead specific components in implementing the R-PP (particularly components 2c, 2d, and 4)
- ❑ Component 4b should be completed; Include a better description of the proposed monitoring of key non-carbon variables within the MRV system (component 4b)
- ❑ The budget of most of the components should be improved, reflecting the activities mentioned in the body of the text. Also funds should be assigned to each activity, main sources of funding to be identified.
- ➔ Put more emphasis and clearly describe capacity building activities in the key areas in the process of R-PP implementation

Overall Summary: TAP on 7 October R-PP version

| Sections | R-PP August-Submission | R-PP September -Submission |
|--|------------------------|----------------------------|
| 1a Readiness Mgtm. Arrangements | Partially met | Largely Met |
| 1b Information sharing, early dialog | Partially met | Largely Met |
| 1c Consultation & Participation Process | Partially met | Largely Met |
| 2a Assessment of Land Use | Partially met | Largely Met |
| 2b REDD-plus strategy Options | Not met | Largely Met |
| 2c REDD-plus implementation framework | Partially met | Partially Met |
| 2d SESA | Largely met | Largely Met |
| 3 Develop a Reference Level | Not met | Largely Met |
| 4a Monitoring: Emissions and Removals | Partially met | Largely Met |
| 4b Monitoring Other Multiple Benefits, | Not met | Not met |
| 5 Budget | Not met | Not met |
| 6 Program Monitoring & Evaluation | Met | Met |