

FCPF PC7

Washington DC, November 3rd, 2010

Madagascar REDD Readiness Preparation Progress

Jean Roger RAKOTOARIJAONA

Office National pour l'Environnement

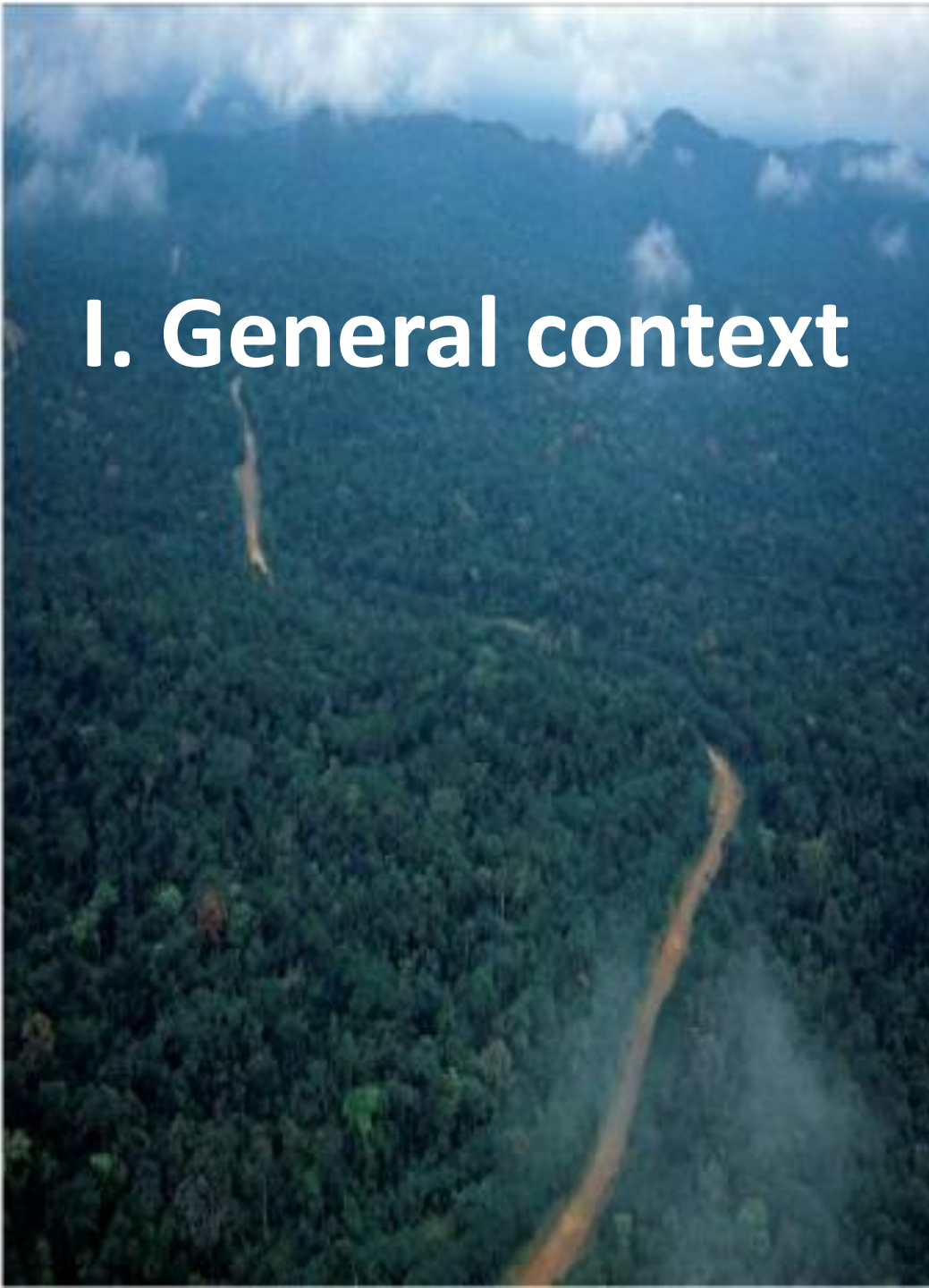
CT-REDD co-President

Presentation contents

- I. General context
- II. R-PP process
- III. Key elements for the REDD readiness preparation
- IV. Conclusion and perspectives

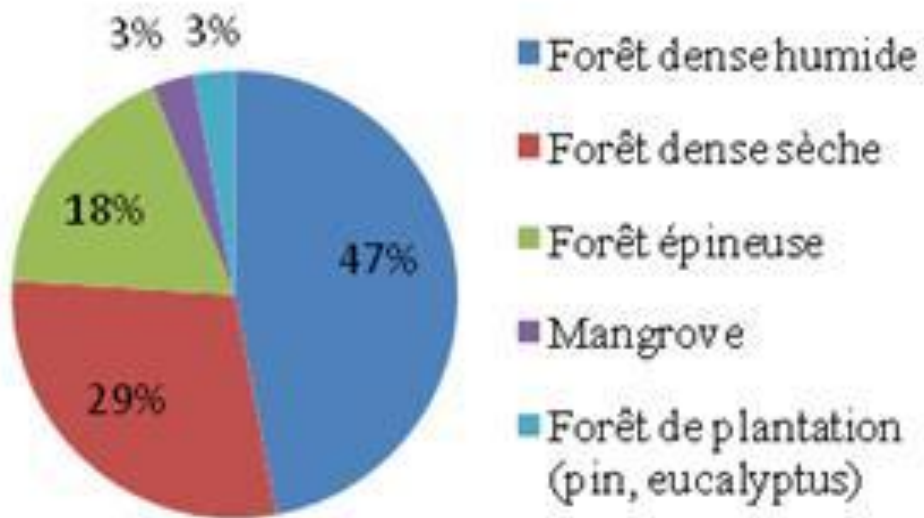


I. General context

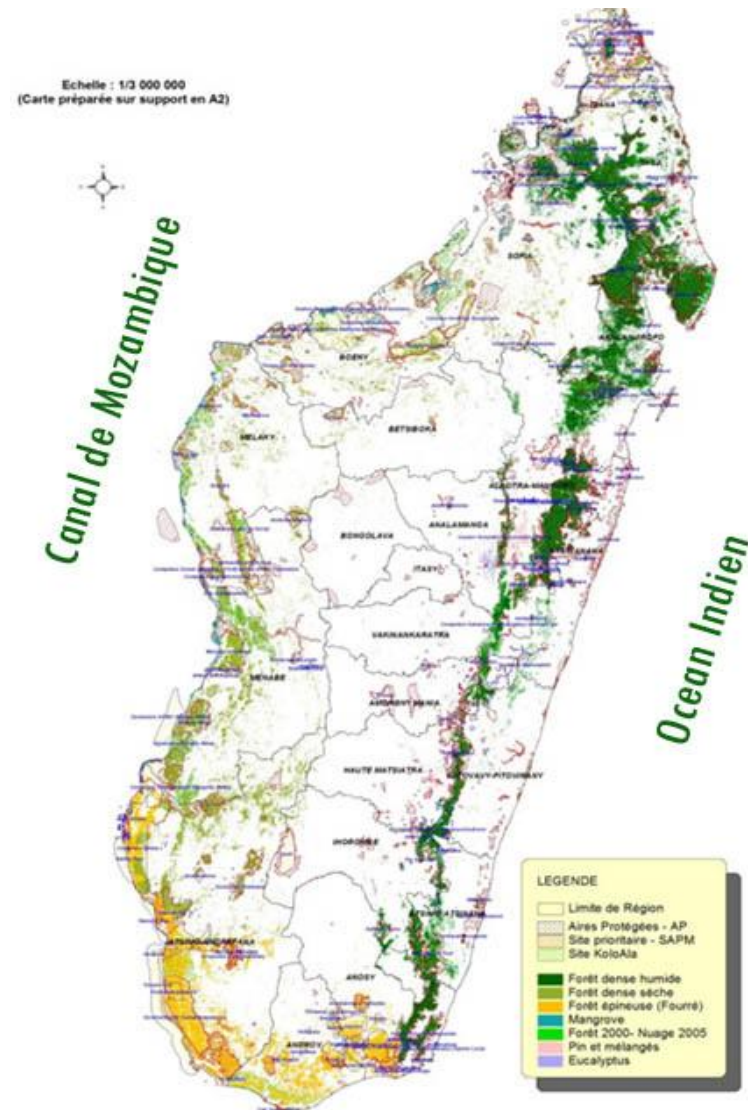


Various forest ecosystems and high but declining deforestation rate

- **Forest cover : 9.5 million ha (16%)**

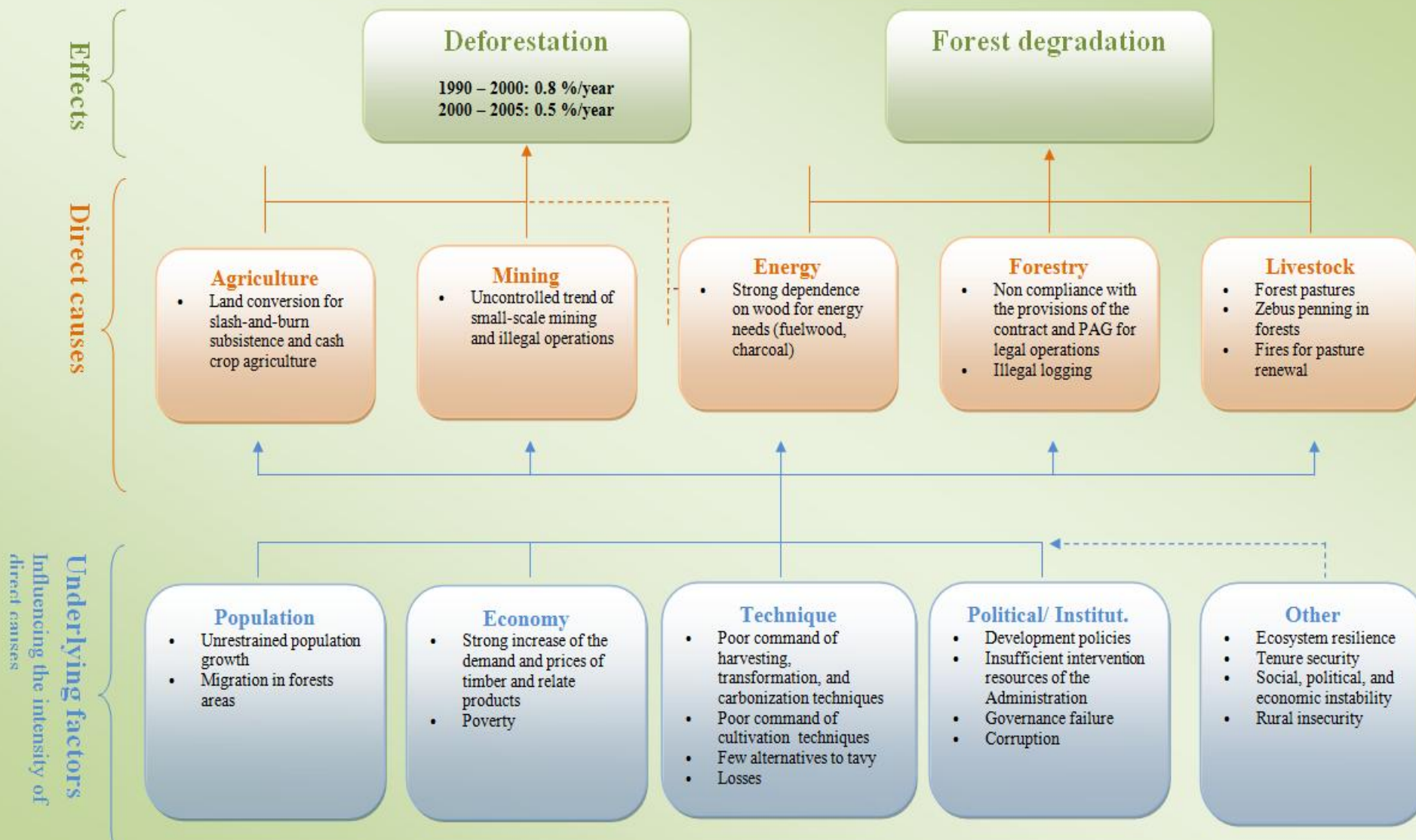


- **Annual deforestation rate:**
 - 1990-2000 : 0,83%
 - 2000-2005 : 0,53%



Causes of deforestation and degradation

Overview of the causes of deforestation and degradation in Madagascar



Madagascar : a REDD country?

Strengths:

- ✓ reduction in deforestation rates,
- ✓ low opportunity costs,
- ✓ unique biodiversity,
- ✓ community management of forest resources,
- ✓ new models of protected areas,
- ✓ ongoing land tenure reform,
- ✓ 5 demonstration REDD projects in progress (including carbon transactions)

Opportunities:

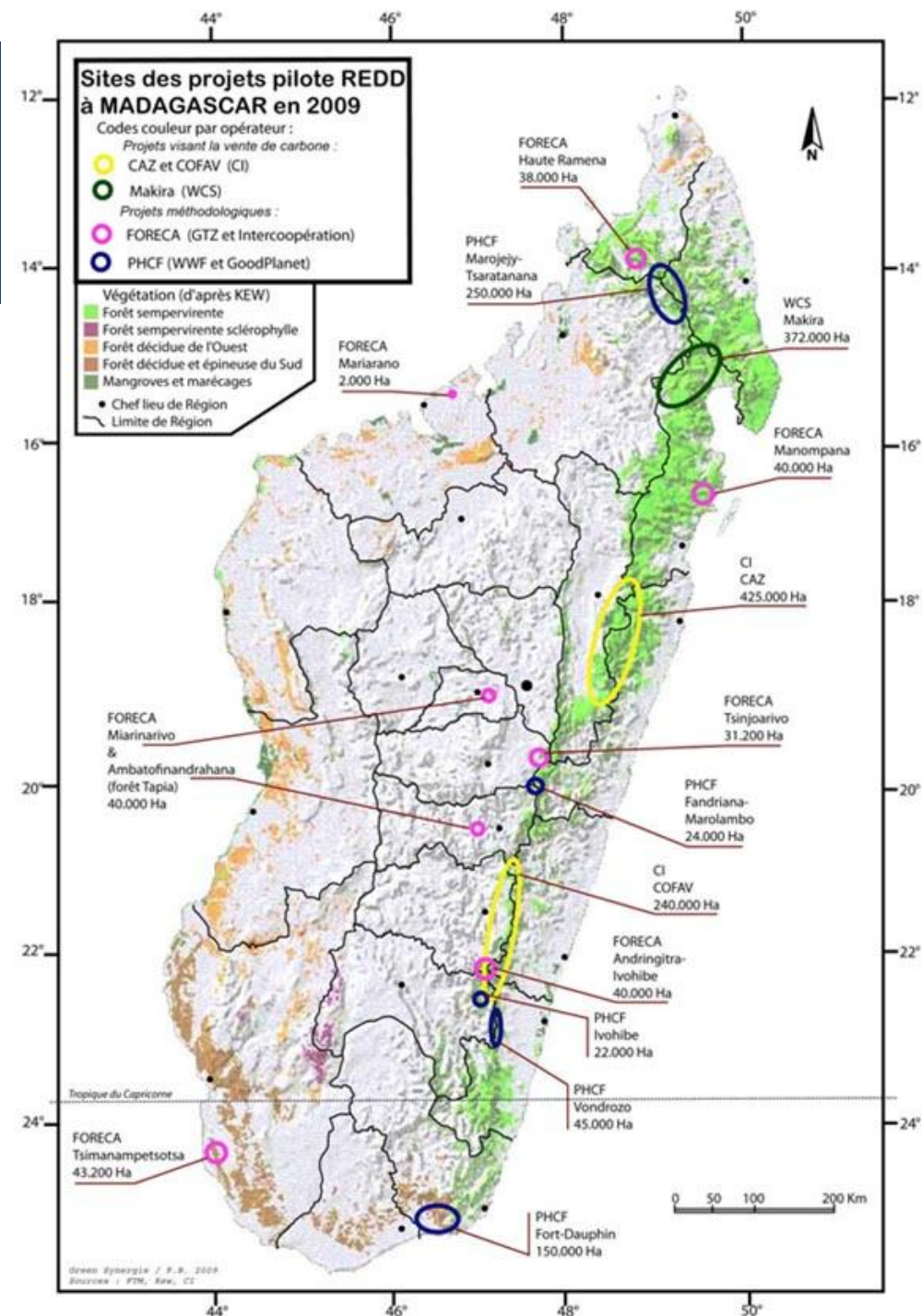
- ✓ reinforcement of the fight against deforestation and poverty,
- ✓ new financing sources
- ✓ support to ongoing and new policy reforms,

CT-REDD in place and active



REDD projects experiences

- 5 demonstration and experimentation projects
- 1,75 million d'ha of forest (250.000 à 500.000 ha /projet)
- Methodologies
- Local and National Reference scenario being prepared
- Incentives at community level
- Carbon credit transactions
- National capacity on carbon



Specific Constraints

- Sociopolitical crisis since January 2009: R-PP preparation has been delayed due to blockages in funds mobilization
- Worsening of forest governance situation, with illegal exploitation and exportation of precious wood

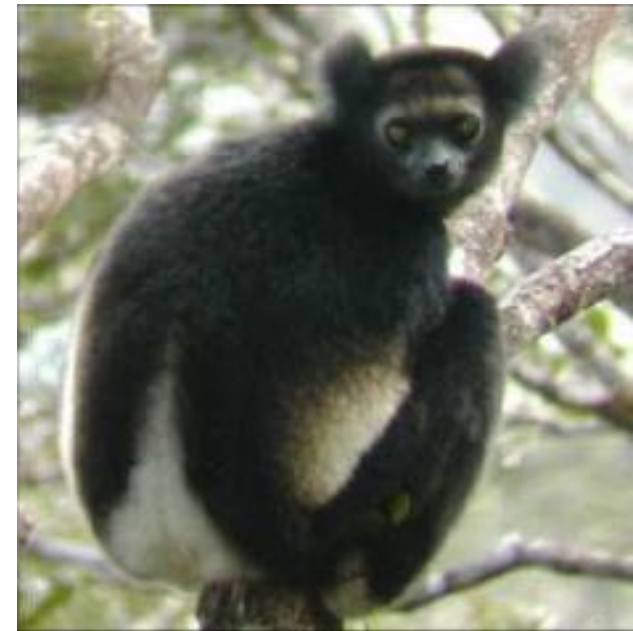


II. Madagascar R-PP process



From La Lopé to Washington

- January 2010 : First informal submission
 - Presentation at FCPF PC5
 - Remarks from TAP, PC, WB and others
- Revisions led by CT-REDD
 - Stakeholders consultations
 - At regional level
 - At national level
 - National validation workshop
 - Draft made available online for comment
 - Review Committee
- Informal submission to FCPF on August 2010
 - Remarks from TAP and WB
 - New discussions and correction
- Final draft October 2010 to be informally presented at FCPF PC7

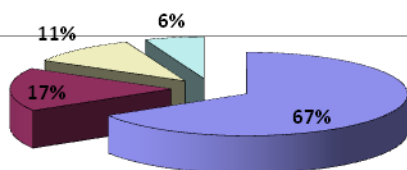


Main realizations in the REDD process in past six months

- Stakeholder consultation at national and regional levels
- Capitalization on existing REDD demonstration projects
- Continued engagement of CT-REDD

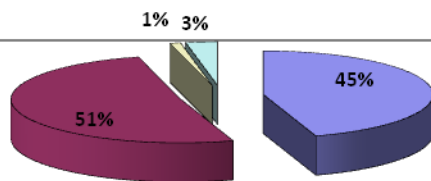


R-PP based on the results of Stakeholders consultation



- Local communities
- Technical services
- Collectivities
- Other

Percentage of participants at regional consultations



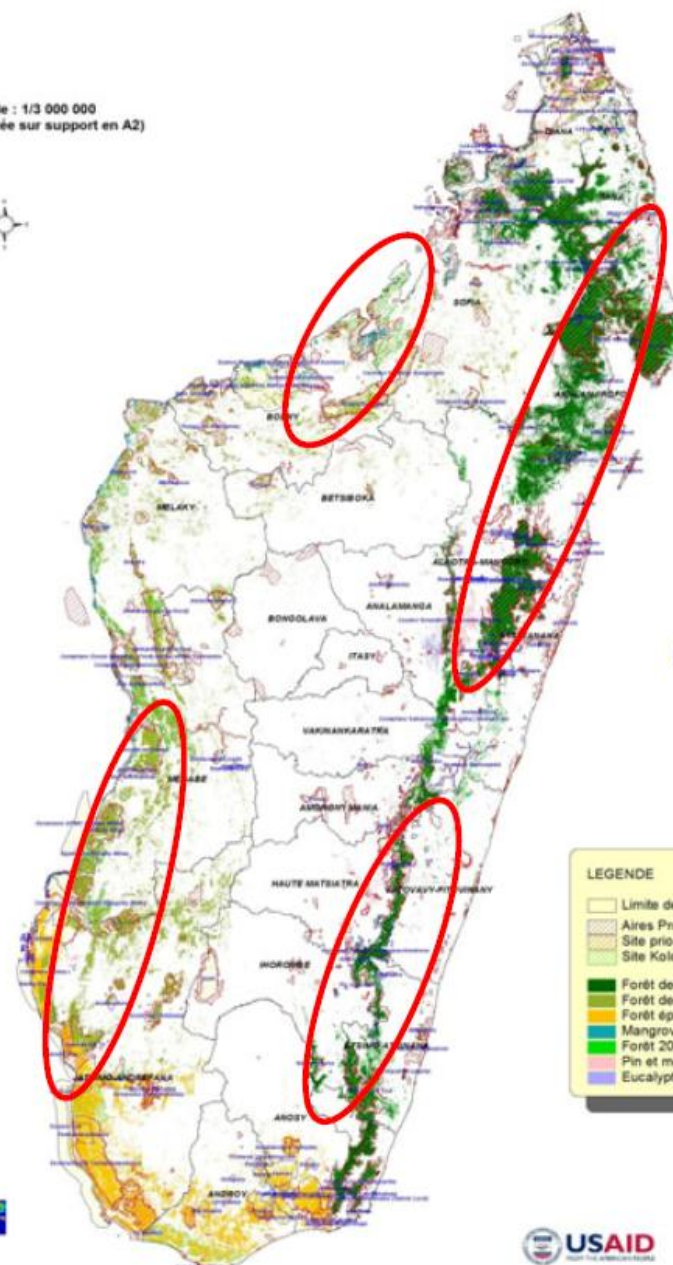
- Government
- Civil society
- Private sector
- Partners

COUVERTURE FORESTIERE 2005
(Limites Aires Protégées et Zones classées
en Réserve pour SAPM et KoloAla, arrêté 18633/08 du 18/10/2008)

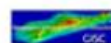
Echelle : 1/3 000 000
(Carte préparée sur support en A2)

CANAL DE MOZAMBIQUE

OCEAN INDIEN



- LEGENDE
- Limite de Région
 - Aires Protégées - AP
 - Site prioritaire - SAPM
 - Site KoloAla
 - Forêt dense humide
 - Forêt dense sèche
 - Forêt épineuse (Fourré)
 - Mangrove
 - Forêt 2000- Nuage 2005
 - Pin et mélangés
 - Eucalyptus



The National REDD Technical Committee (CT-REDD)

Ministries : Environment and Forests, Agriculture, Energy, Mining, Decentralisation and Land planning, Transport, Industry, Foreign Affairs, Meteo

National agencies and NGO : ONE, MNP, ONESF, ESSA-Forêts, SAGE...

Environmental Foundations : Tany Meva, FAPBM,

Technical and financial partners : World Bank, UNDP, CI, WWF, WCS, GTZ-PGME, Intercooperation, USAID

Civile society : Voahary Gasy, Simiralenta (réseau genre),

➔ CT-REDD is co-leaded by DGF and ONE

➔ CT-REDD is an informal facility

➔ Extension is ongoing : private sector, local communities, regions, universities and research agencies...

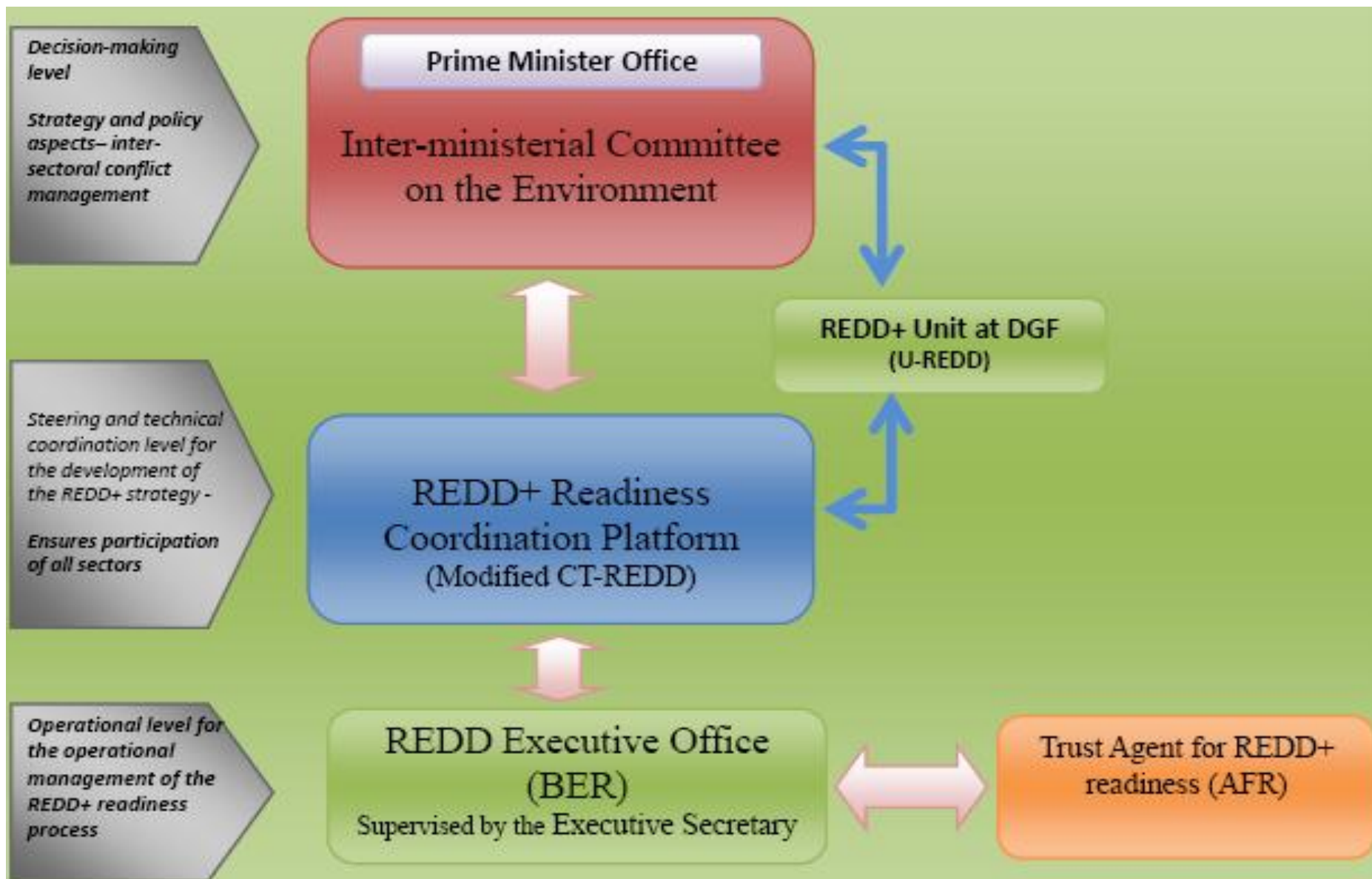
Main changes since August 2010

- **Institutional arrangements**
 - Modifications to the REDD Management arrangements (redifinition of roles and responsibilities of U-REDD and PCP-REDD+, new annex)
 - Clarification of arrangements to reach multi-sectoral coordination → Assessment of CIME to be done
- **Strategy and Implementation Framework**
 - In depth discussion on forest governance challenges
 - Modification of the REDD Strategy Options → emphasis on developing alternatives to deforestation
 - Reduction of intervention directions
 - Differentiated management and access to natural resources by the inclusion of marginalized groups of people
 - More resources allocated to strategy development
- **MRV**
 - Precision on institutional arrangements for the national MRV system
 - ONE to play a leading role

III. key elements of the REDD readiness preparation



The three levels of the Readiness management arrangement

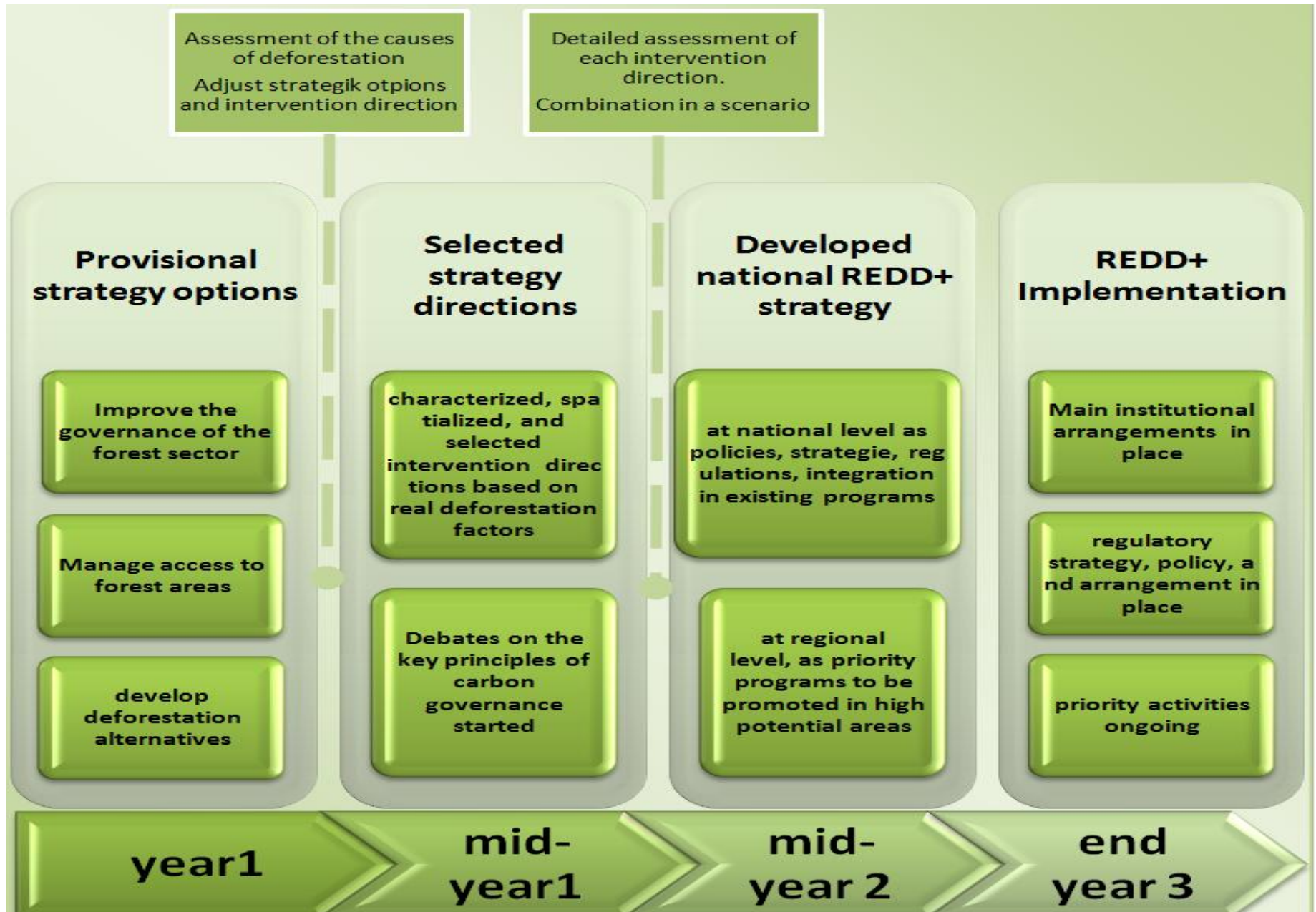


SESA based on existing framework

- Compliance system (MECIE)
- Safeguard procedure framework,
- Strategical Environmental Assessment (SEA) guidelines
- Consultations are ongoing within the SAPM (Madagascar Protected Areas System) setting up and natural resources management transfer etc.



Development steps of strategy options



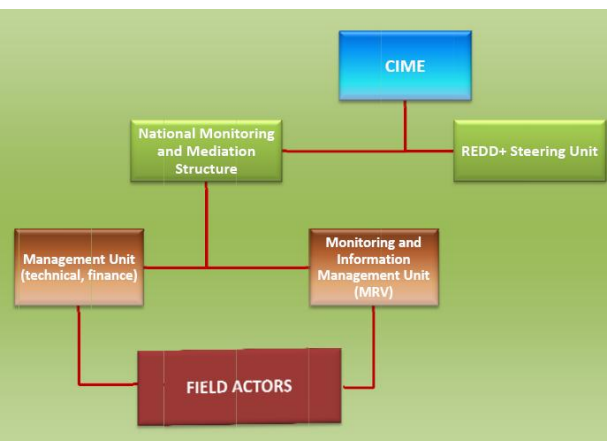
Setting up the implementation framework

Principles

- National approach
- Results-based incentives
- Transparency
- Optimization of existing structures
- Efficiency and equity

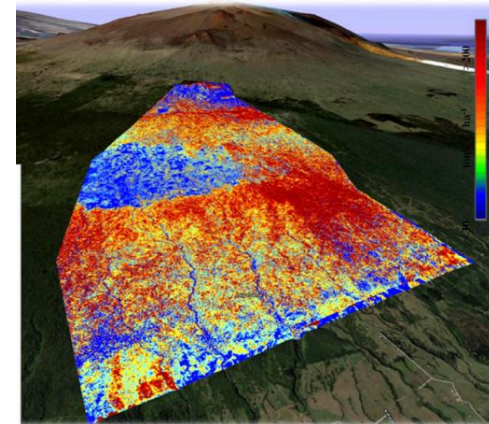
The two phases

- Preliminary vision of the framework,
- Governance institutional framework, including:
 - Inter-sectoral coordination and resolution of potential conflicts,
 - Sharing of responsibilities, and
 - Studies on the needed institutional and legal reforms.

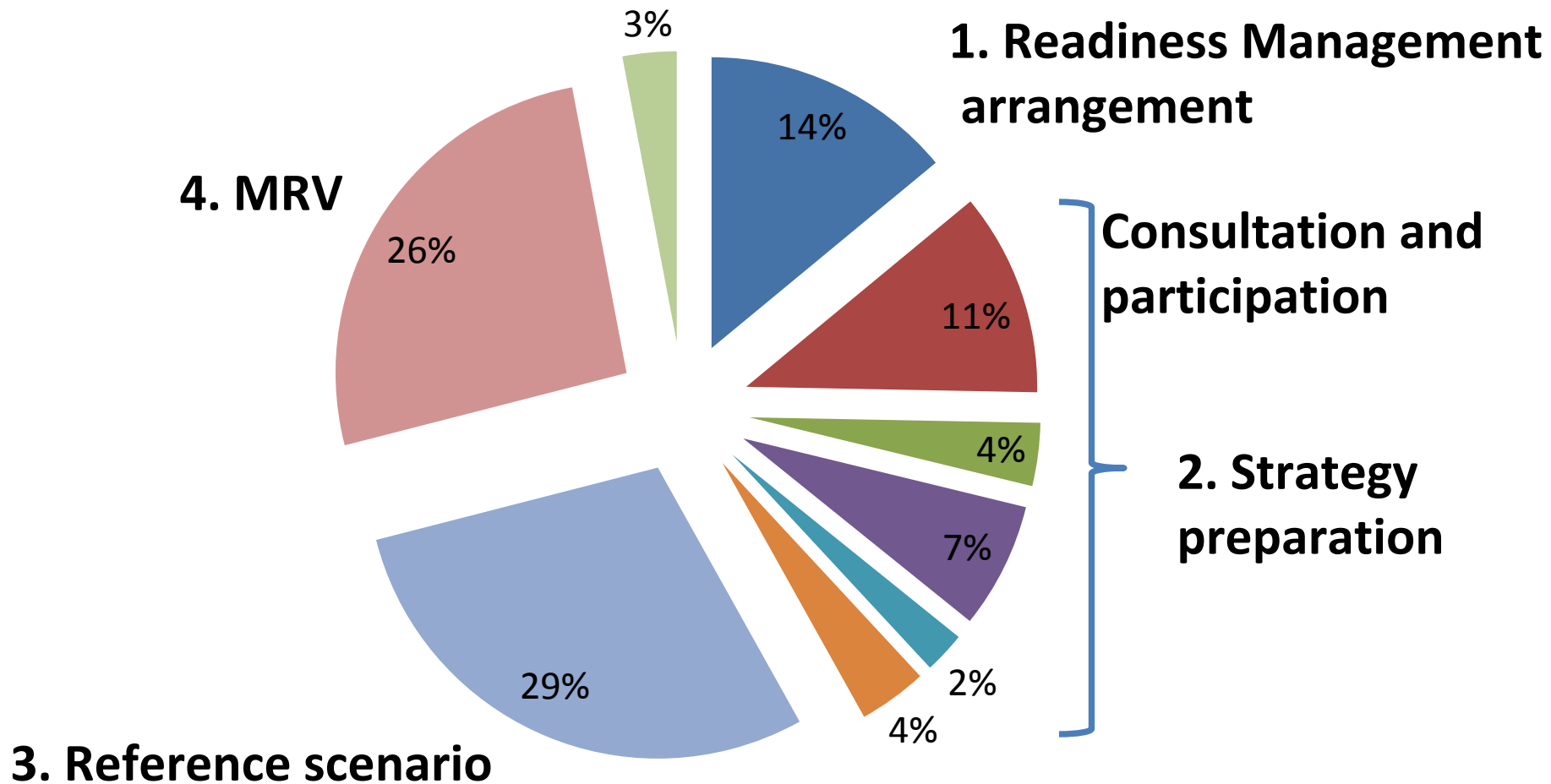


Some methodological considerations

- Forest definition to be reviewed
- Assessment of the historical deforestation and degradation using satellite image and **CLASlite**
- Estimation of carbon stock in the aboveground biomass by the **LIDAR** technology
- Development of allometric equations and field surveys
- The MRV system will include five aspects:
 - carbon (emissions/removals),
 - drivers of deforestation/degradation,
 - other benefits,
 - environmental and social impacts
 - governance
- The system will include data reporting and validation of results and will be declined at three levels: national, regional, and local.



Budget distribution



IV. Conclusion and perspectives

- ✓ Madagascar remains engaged in the REDD and the FCPF processes
- ✓ Readiness preparation continue despite the sociopolitical conditions \Rightarrow statu quo R-PP and idea IR-PP
- ✓ Regional cooperation is encouraged
- ✓ Comments are welcome



In the meantime...

- **Some available resources**
 - Support from the EP III (World Bank)
 - Others Partners (incl. bilateral cooperation)
- **Some activities will be launched**
 - MRV and reference scenario
 - Forest definition
 - Methodological test
 - Allometric equations establishment
 - Indicators systems review
 - Reporting system development
 - Capacity building
 - “Recherche-actions” (participative monitoring, revenue sharing, forest management...)
 - SESA guide formulation
 - Readiness management arrangement operationalization
 - Communication on R-PP document





Merci de votre attention