



FEDERAL DEMOCRATIC REBUBLIC OF ETHIOPIA
MINISTRY OF ENVIRONMENT AND FOREST
NATIONAL REDD+ SECRETARIAT



National REDD+ Secretariat
Committed to making Ethiopia ready
to the global REDD+ mechanism

NATIONAL REDD+ SESA/ESMF ROAD MAP
(DRAFT)

Contents

1. Introduction	3
1.1 Why SESA,ESMF,RPF & PF ?	4
2. SESA,ESMF,RPF & PF roadmap.....	4
2.1. Management Arrangement of SESA/ESMF.....	4
2.2. SESA major activities	6

1. Introduction

REDD+ is an international mechanism which refers to policy approaches and positive incentives for reducing emissions from deforestation and forest degradation in developing countries and takes into account the role of conservation, sustainable management of forests and enhancement of forest carbon stocks.

The success of REDD+ actions in achieving its goal and maximize multiple benefits will depend on reduction of social and environmental risks to a substantial degree. The potential benefits and risks to social and environment that REDD+ can bring will vary from one region to another depending on a variety of factors from biophysical and geographical to socio-economic and cultural. Assessment of social and environmental risks related to these factors can, therefore, help decision makers to plan and prioritize actions as part of national REDD+ programmes.

The Safeguards instruments(SESA/ESMF/RPF/PF) that will be prepared during the implementation of REDD+ readiness phase help to address the impacts.

The SESA identify where REDD+ can improve development activities and other environmental measures adopted to combat climate change.

ESMF provide a framework for effective management of environmental and social issues in implementing the REDD+ Strategy. It seeks to both enhance environmental and social development benefits of REDD+ actions and projects and mitigate any adverse impacts.

The RPF is instrument used to compensate or replace lost assets, livelihood, and income; and assistance for relocation, including provision of relocation sites with appropriate facilities and services. Moreover it help restoration of livelihood to achieve at least the same level of well-being with the Project as without it.

The Process Framework(PF), establishes a process by which members of potentially affected communities can participate in planning of project components, determination of measures necessary to achieve the policy objectives, and implementation and monitoring of relevant project activities. It covers restrictions of access to legally designated forest conservation areas, which result in adverse impacts on livelihoods of the affected people.

1.1 Why SESA,ESMF,RPF & PF ?

SESA,ESMF,RPF& PF are tools that seeks to integrate social and environmental considerations into policy-making processes, leading to more sustainable REDD+ policies and programs. It supports the design of the national REDD+ policy framework, including the National REDD+ Strategy.

2. SESA,ESMF,RPF & PF roadmap

This roadmap illustrates management arrangement and planned activities for SESA,ESMF,RPF & PF study and implementation.

2.1. Management Arrangement of SESA,ESMF,RPF & PF

The REDD+ secretariat established SESA executing body work at different level and mandate. At national level environment safeguard specialist and social development specialist are employed and the same number of specialists are also employed for its Oromia region landscape REDD+ program . Main duties and responsibilities of the national and regional safeguard specialists is to ensure the considerations of environmental and social issues in the whole REDD+ process and also to play a leading role in the development of safeguard instruments.

In order to oversee the overall activities of Safeguard issues the secretariat established national SESA taskforce. It constituents from Government

Organization, Nongovernment Organization, Academia, Research, and Community based Organizations.

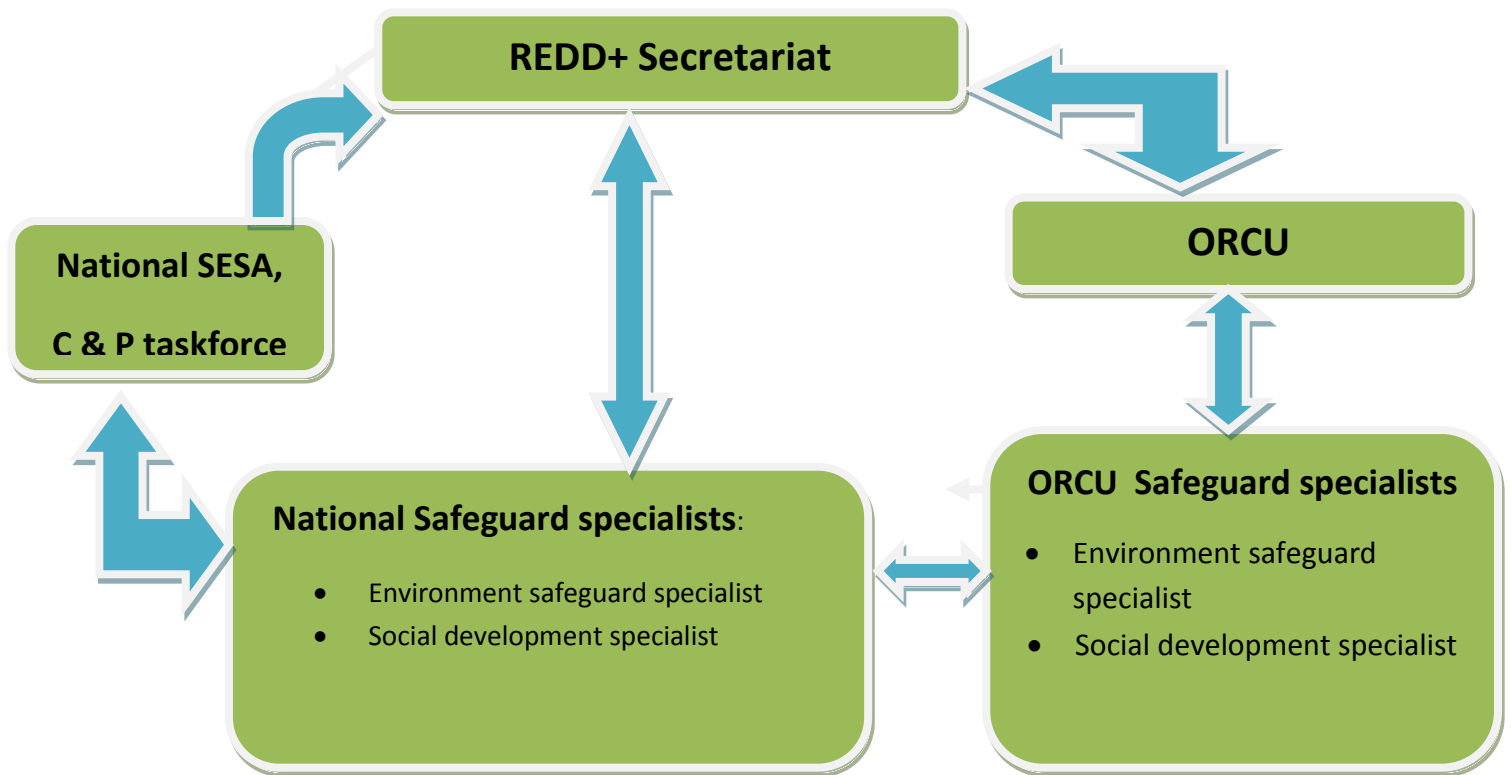


Fig1. SESA, ESMF, RPF & PF Management structure

2.2. SESA, ESMF, RPF, & PF major activities

No	Activities	Institution/ organization Responsible	Time	Result Indicator (deliverable)
1	Preparation			
1.1	SESA/ ESMF TOR preparation	REDD+ Secretariat and WB	One month	SESA/ESMF TOR prepared
1.2	Follow up of advertisement	REDD+ Secretariat		
1.3	Evaluation of EOI and approval	REDD+ Secretariat, MEF, SESA TF member and WB	Four Week	Short listing of firms completed
1.4	Evaluation of SESA/ESMF technical proposal and approval	REDD+ Secretariat, MEF	Two week	Firm selection completed
1.5	Negotiation with selected consultant firm on terms of agreement	REDD+ Secretariat, and MEF	One day	Negotiation conducted
1.6	Discussion on general approach	REDD+ Secretariat & WB with selected consultant firm	One day	Discussion conducted
2	SESA,ESMF,RPF & PF document preparation		Six Month	
2.1	Launching & inception report of SESA,ESMF,RPF & PF document preparation	REDD+ secretariat, WB, SESA TF and other stakeholders		Launching & first Inception report of SESA,ESMF,RPF &PF submitted
2.2	Final Inception report submission	REDD+ secretariat		Final inception report submitted

2.3	<p>SESA,ESMF,RPF & PF document preparation tasks</p> <hr/> <p>SESA tasks:</p> <p>task 1: Identifying key issues and assessment of key stakeholders</p> <p>Task 2: Initial description of the social and environmental situation of the forestry sector in Ethiopia</p> <p>Task 3: Outline the legislative, regulatory, and policy regime</p> <p>Task 4: Formulation of arrangements for implementation Task 5: Review particular institutional requirements within the REDD+ implementation framework</p> <p>Task 6: Analysis of the possible impacts of different REDD+ strategy option scenarios</p> <p>TASK 7: Preparation of final SESA documents</p> <p>Task 8: Present preliminary findings on Environmental & social risks and gaps</p> <p>Task 9 : Enhanced and targeted stakeholder consultation</p> <p>ESMF tasks:</p> <p>Task 1: Development of an Environmental and Social Management Frame-work (ESMF), and a Resettlement Policy Framework</p> <p>Task 2: An outline of capacity</p>	Consultant firm		On going
-----	---	-----------------	--	----------

<p>building actions for the entities responsible for implementing the ESMF</p> <p>Task 3: Required technical assistance</p> <p>Task 4. Outline of the budget for implementing the ESMF</p> <p>Task 5. Provisions for Monitoring and Evaluation</p> <p>Task 6. Dispute resolution mechanism</p> <p>Task 7. Preparation of a final draft ESMF and the notary Resettlement Policy Framework</p> <p>RPF tasks:</p> <p>Task 1. Prepare REDD+ Program Description</p> <p>Task 2. Review of related Policy Legal & Administrative Framework</p> <p>Task 3. Preparation of Overview of RPF process</p> <p>Task4. Synthesis of Potential Resettlement Impacts & Mitigation</p> <p>Task5. Setting of Criteria for eligibility & Entitlements</p> <p>Task6. Synthesis of Preparation, review and approval process of RAP & ARP</p> <p>Task7. Prepare Grievance Redress Mechanism related to involuntary resettlement</p> <p>Task8. Prepare Public Consultation & Disclosure Plan</p> <p>Task 9. Prepare Monitoring &</p>			
--	--	--	--

	<p>Evaluation of impacts</p> <p>PF tasks:</p> <p>Task 1. REDD+ Program description</p> <p>Task 2. Review of PF Related Policy , Legal, Regulatory & Administrative Framework</p> <p>Task 3. Synthesis of Potential program restrictions on access & Livelihoods</p> <p>Task 4. Preparation of Eligibility criteria & Guiding Principles</p> <p>Task 5. Monitoring & Evaluation Arrangements</p>			
2.3.	Follow up of SESA, ESMF, RPF, & PF documents	REDD+ Secretariat , SESA TF, and WB		
2.4.	Evaluation of Midterm report	REDD+ Secretariat , SESA TF, and WB		
2.5.	Validation workshop	REDD+ Secretariat , SESA TF, WB and Other stakeholders		
2.6.	Four stand alone national study reports(SESA, ESMF, RPF & PF)	Consultant		
3	Consultation & Participation Plan			
3.1	Consultation and Participation plan preparation	REDD+ Secretariat with SESA TF		On going
3.2	Conduct Piloting on C & P plan	REDD+ Secretariat		Not yet started
4	Capacity building on Safeguard instruments			
4.1	Consultation/training after the development of SESA document for GO , NGO's/CBO's, and private sectors at National, Regional, Zonal, Woreda and Kebele level using C& P plan	REDD+ Secretariat, SESA TF and regional REDD+ coordination unit		Not yet started
5	Integration of Safeguards issues in	REDD+ Secretariat		

	REDD+ strategy			
5.1	Involve in draft REDD+ strategy to integrate safeguard issues	REDD+ Secretariat safeguard team		On going
6	Regional Capacity enhancement on safeguard issues	REDD+ Secretariat safeguard team		Conducted in six regions

Annex 1. SESA task force members

Institutions	Sector	Composition
Ministry of Environment and Forest	Environment	Government Organization
Wondo Genet College of Forestry and natural resources	Forestry	Academia
Farm Africa/SOS sahle	REDD+ Programme	Nongovernmental Organization
Climate change Forum - Ethiopia	Climate	Nongovernmental organization
Ethiopian Environmental Journalists Association	Media	Nongovernmental organization
Pastoralist forum	Pastoral area	Nongovernmental organization
Forest Research Center	Social forestry	Government Organization
Horn of Africa Regional Environment Center & Network	Social & Ecological Resilience partnership programme	Government institution, Addis Ababa University
Initiative for Living Community Action	Work with underserved community	Nongovernmental organization

