



Ministerio de
Medio Ambiente
y Recursos Naturales



El Salvador

Towards Readiness

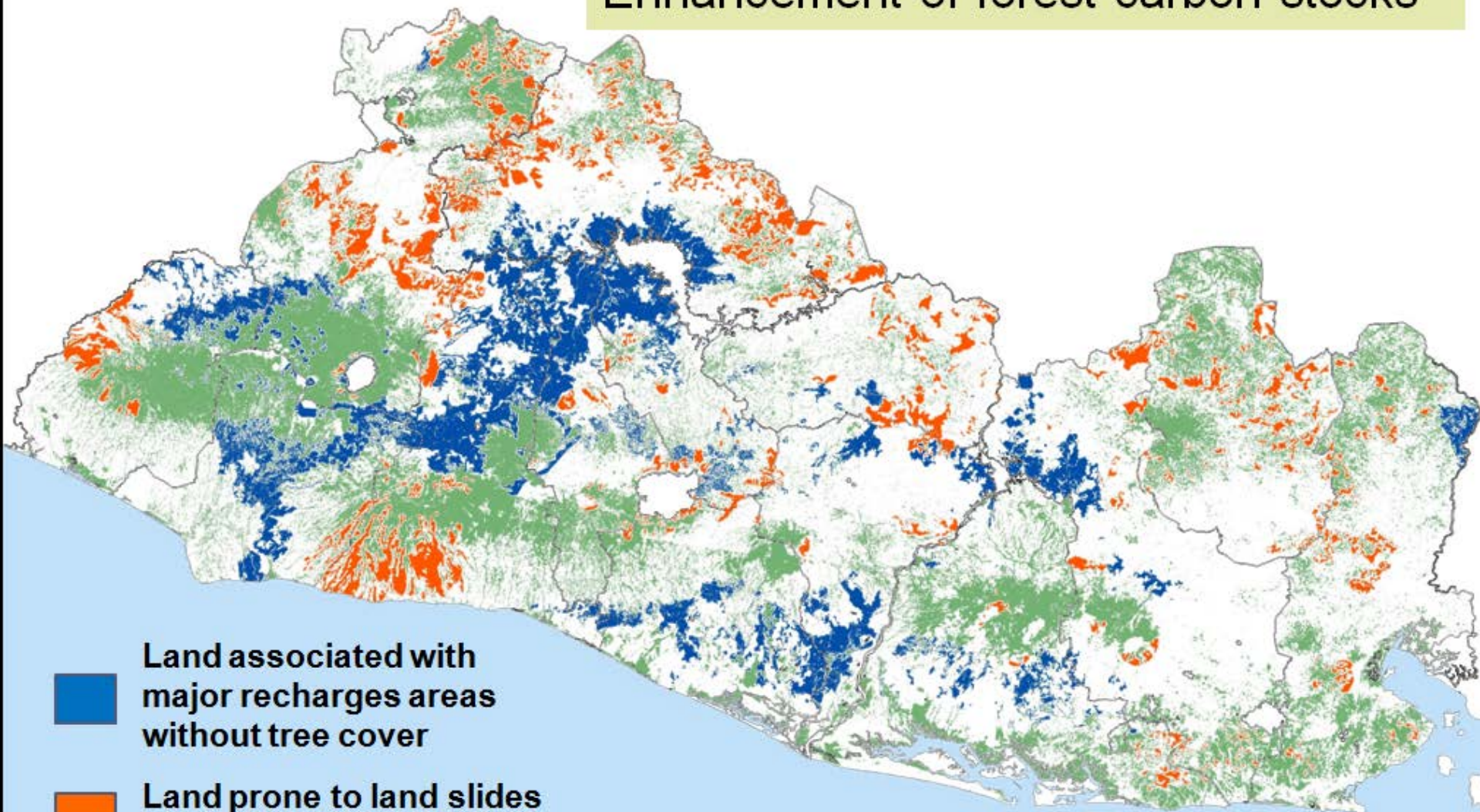
Preparation Proposal


Adaptation based Mitigation


December 10, 2012,
Doha, Qatar

Ecosystem restoration

Enhancement of forest carbon stocks



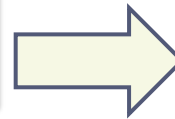
 Land associated with major recharge areas without tree cover

 Land prone to land slides without tree cover

 Land with tree cover

NATIONAL PRIORITIES

REDD+ Strategy
Adaptation based Mitigation



Adaptation

Build resilience and
reduce human and
ecosystems
vulnerability



Mitigation

Maintain and increase
Carbon stocks

National goal = 1,000,000 Ha



1. Improve biodiversity conservation
(To achieve Aichi Targets CBD 14,15, 5, 7 & 11)



2. Improve livelihood opportunities



3. Regulate water flow

4. Improve water storage



5. Reduce erosion and
halt soil loss

Driving forces and main activities related with Land Use Change

Land Use Change for agriculture

Housing and urbanization

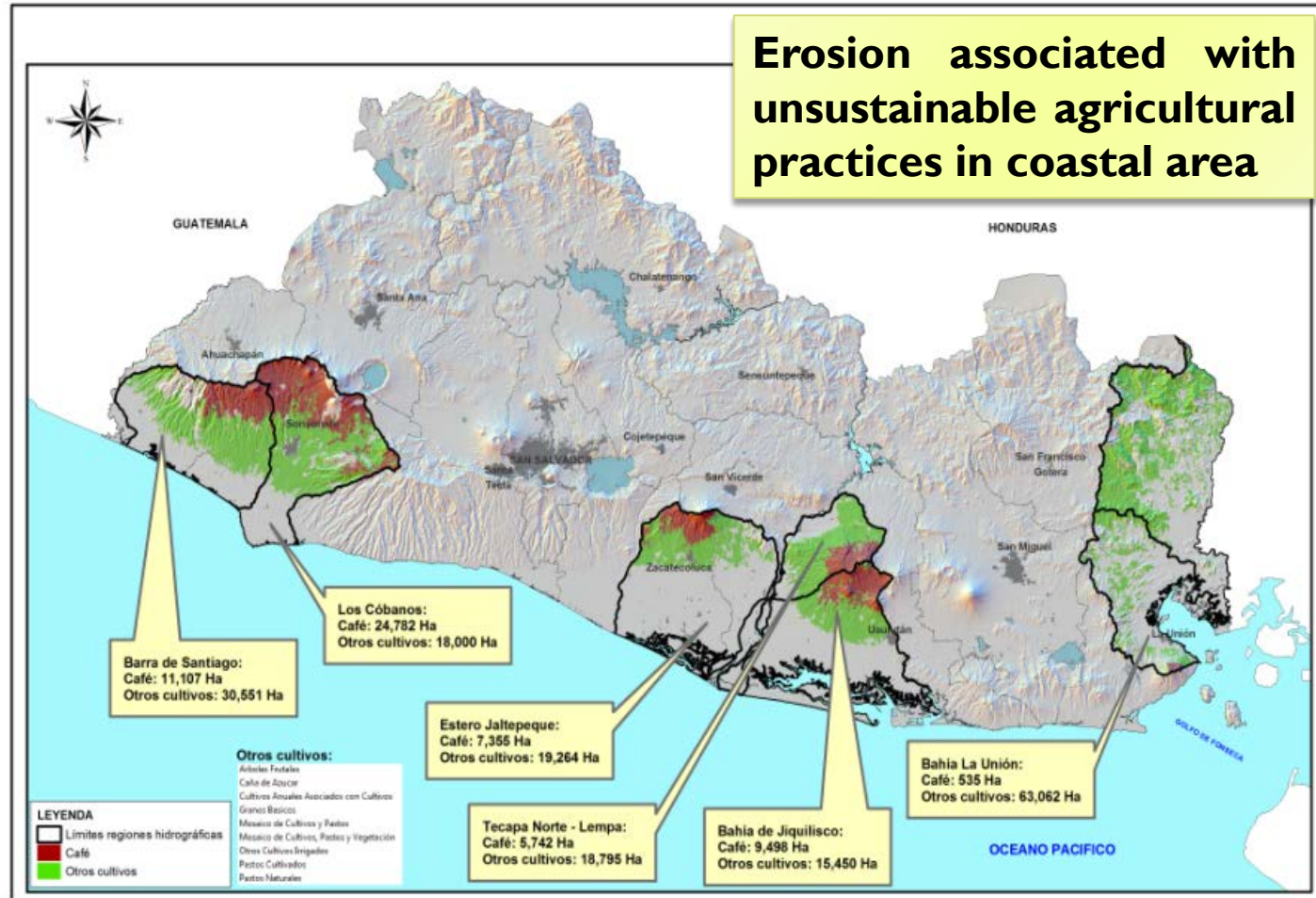
Pasture expansion

Forest Fires

Illegal logging

Unsustainable agricultural practices

Erosion associated with unsustainable agricultural practices in coastal area



REDD+ Strategic Options

Unsustainable agricultural practices

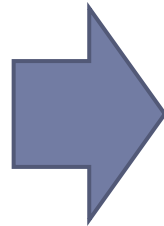
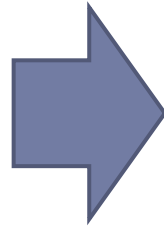
Land Use Change for Agriculture

Housing and urbanization

Pasture expansion

Forest Fires

Illegal logging



1. Harmonize sectoral policies and legislation linked to/influencing land use and land use change;
2. Activate legal instruments related with:
 - a) Land planning and environmental zoning.
 - b) Land use and Land use change.
 - c) Agricultural practices regulation.
 - d) Harvest burning.
 - e) Illegal timber and firewood extraction.
3. Incentives & Compensation Program
4. Recognize rights over forest resources managed collectively;
5. Forest conservation and restore forest ecological connectivity;
6. Increase Climate Resilient agriculture and Agro-forestry, low in CO₂ emissions.

Strategy Options – to confront Drivers of forest D&D



Activate legal instruments related to environmental zoning and agricultural practices

MARN MAG bilateral agreement



12,500 hectares without burning in sugar cane harvest 2012 – 2013

Zoning – agricultural activities regulation in fragile ecosystems and buffers zones

**SINAMA
Climate Change Committee**

**MARN MOP MAG
MH MIREX**

Driver assessment D&D



Strategy Options – to confront Drivers of forest D&D



**Activate legal instruments
related to environmental zoning**

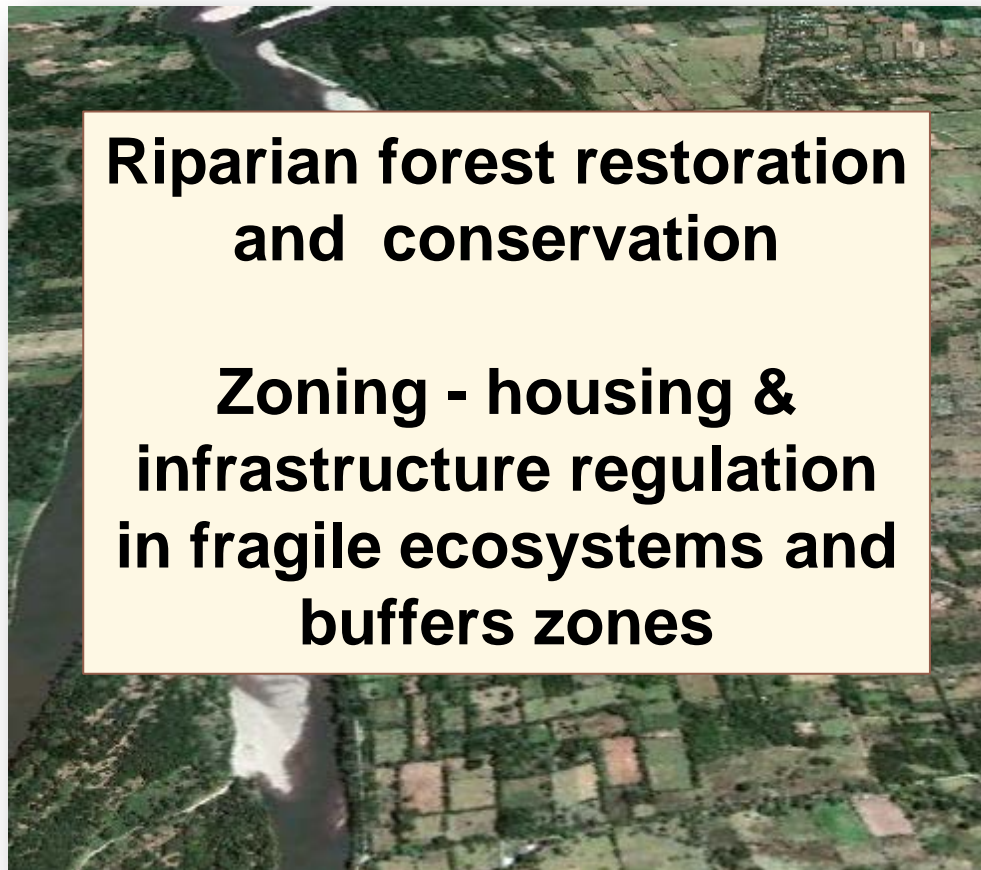
**Forest conservation and restore
forest ecological connectivity**

**SINAMA
Climate Change Committee**

**MARN MOP MAG
MH MIREX**

Driver assessment D&D

MARN MOP bilateral agreement



**Riparian forest restoration
and conservation**

**Zoning - housing &
infrastructure regulation
in fragile ecosystems and
buffers zones**

Early Dialogue– Relevant Actors

Dialogues with Central and Municipal Governments

Indigenous communities

Universities and Research Centers

Forest's owners and Forestry Private Sector

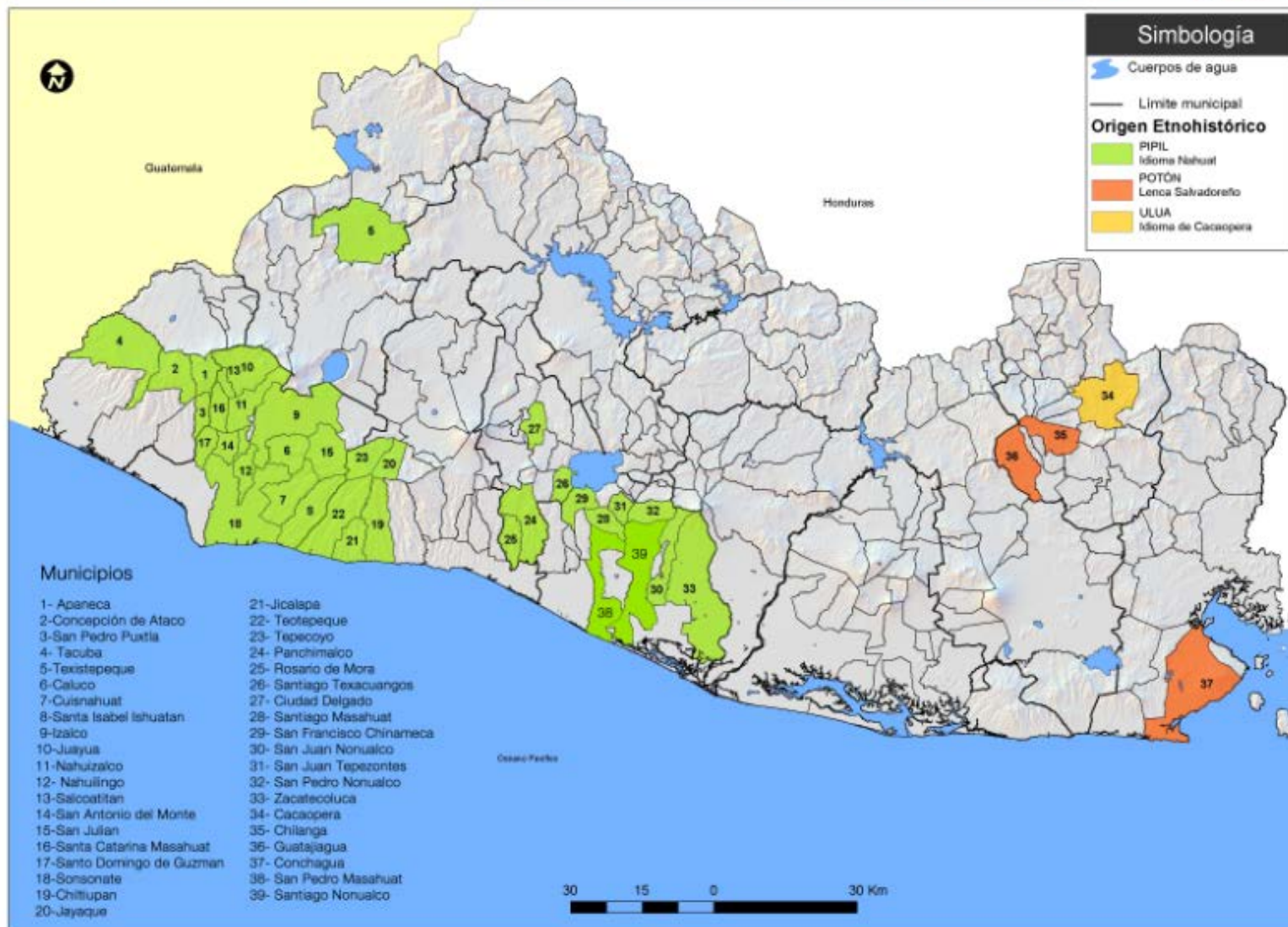
Associations of small Producers & Cooperatives

Environmental & Development NGO's (PA – NGO co-managers)

Coffee producer associations

SECTOR	N° Institutions	Total	Women	Men
Academy: Universities and Research Centers	12	61	23	38
Environmental & Development NGO's	15	42	20	22
Forest's owners and Forestry Private Sector	14	14	4	10
Coffee producer associations	3	9	3	6
Indigenous leaders and women leaders	20	28	9	19
Directors , Unit Heads, and staff specialist MARN	--	48	21	27
Forestry Directorate, CENTA Research Center, Deputy Office MAG	--	30	9	21
Sub Total	--	232	89	143

Municipios reconocidos de marcada tradición indígena en El Salvador

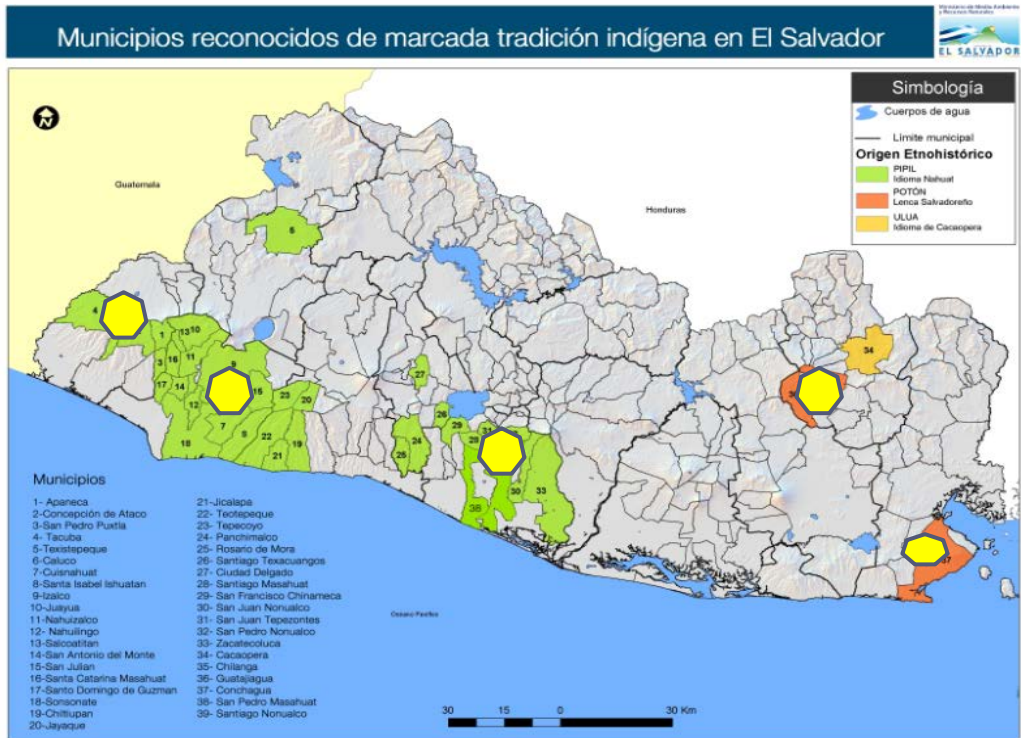


Indigenous People Board

Leaders and Women leaders Indigenous Communities



Capacity Building Workshops with Indigenous Communities



Capacity building Workshops

Consultation Framework

High Level meetings with
Decision – makers (MAG)

Dialogues with Central and
Municipal Governments

Indigenous communities

Private Sector- Forestry and
Forest owners

Universities and Research
Center

Associations of small
producers & Cooperatives

Environmental &
Development NGO's

Cane, Cattle & Coffee
producer associations

Instancia Consultiva Intersectorial

Mesas de Concertación Forestal
Mesa Comunidades Indígenas

Mesas Temáticas de Diálogo

**Sistema de Incentivos
y Compensación**

**Sistema de Monitoreo
MRV/Salvaguardas**

**Estrategia de Atención
de Drivers de D&D**

**Adecuación de marcos
legales reconociendo
derechos**

**Mecanismos de
Gobernanza**

Design and implementation of SESA PROCESS

Key Stakeholders + Safeguards + Design

Studies + Options + Consultation

**Drafting SESA
Work-plan**

Draft proposal
SESA

SESA Proposal
Development

Elaboration
of Proposal
Work-plan
SESA

ToRs SESA
Recruitment
Technical
Support

Preliminary
Discussion
Organize Follow-up
Group for SESA
Key Stakeholders

Validation
Workshop
SESA

Working
Group for
ESMF

Carry out relevant studies and
analysis of Land tenure and
land markets ; Carbon
ownership; potential impacts
on local communities and
indigenous peoples

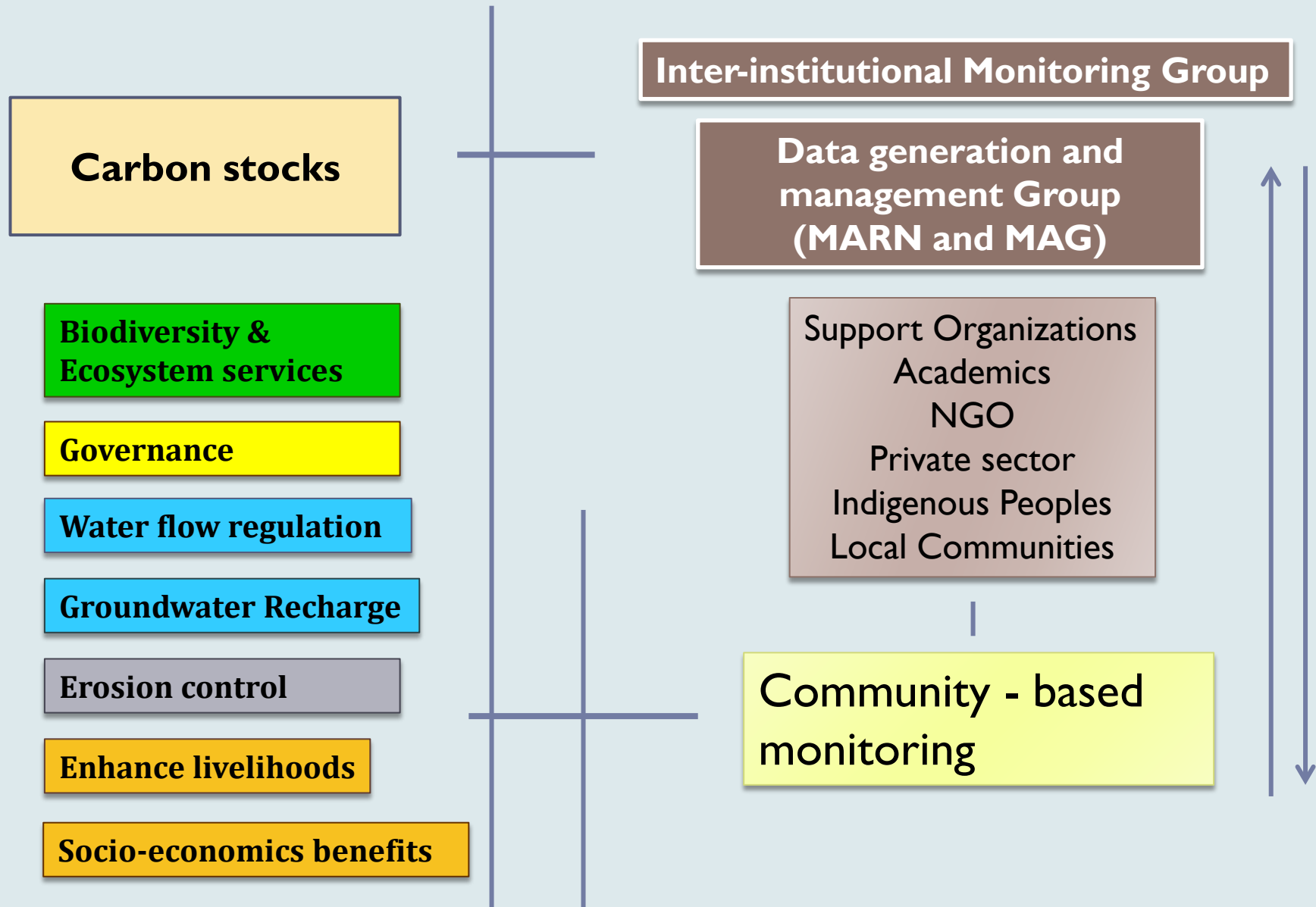
Implementation
Work-plan SESA
Consultation

Formulation
Environmental-
Social
Management
Framework
(ESMF)

2012

2013

Institutional Framework for Monitoring System



Capacity Building

Indigenous People

Preparation and Implementation Phases

Indigenous People Board

Advisory Board

SINAMA

Climate Change Committee

SESA

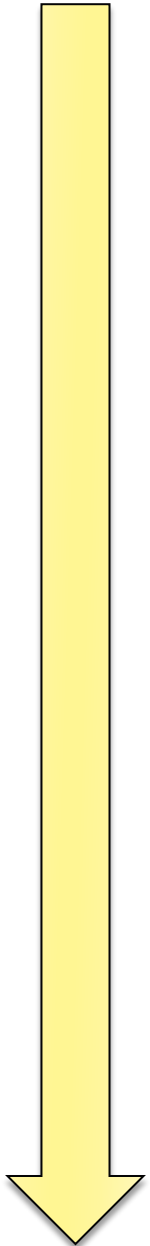
SESA Committee

ESMF

Monitoring System

Inter-institutional

Monitoring Group



Thanks for your attention

Jorge Ernesto Quezada Díaz

Ministry of Environment and

**Natural Resources
El Salvador**

Salvaguardias en programas REDD+ (I/CP.16 Apéndice I)

Programas REDD+ deberían promover y respaldar las siguientes salvaguardias:

- a) *La complementariedad o compatibilidad de las medidas con los objetivos de los programas forestales nacionales y de las convenciones y los acuerdos internacionales sobre la materia;*
- b) *La transparencia y eficacia de las estructuras de gobernanza forestal nacional, teniendo en cuenta la legislación y la soberanía nacionales*
- c) *El respeto de los conocimientos y los derechos de los pueblos indígenas y los miembros de las comunidades locales, tomando en consideración las obligaciones internacionales pertinentes y las circunstancias y la legislación nacionales, y teniendo presente... la Declaración de las Naciones Unidas sobre los derechos de los pueblos indígenas;*
- d) *La participación plena y efectiva de los interesados, en particular los pueblos indígenas y las comunidades locales, en las medidas mencionadas en los párrafos 70 y 72*
- e) *La compatibilidad de las medidas con la conservación de los bosques naturales y la diversidad biológica, velando por que... no se utilicen para la conversión de bosques naturales, sino... para incentivar la protección y la conservación de esos bosques y los servicios derivados de sus ecosistemas y para potenciar otros beneficios sociales y ambientales;*
- f) *La adopción de medidas para hacer frente a los riesgos de reversión;*
- g) *La adopción de medidas para reducir el desplazamiento de las emisiones.*