

An aerial photograph of a vast, lush green landscape. A winding river or stream flows through the center of the image, surrounded by dense, vibrant green vegetation. In the background, a large body of water is visible, bordered by a thick forest. The sky is filled with soft, white clouds.

# REDD+ pilot projet Ecomakala /EDRC

**Thierry Lusenge**  
Project manager

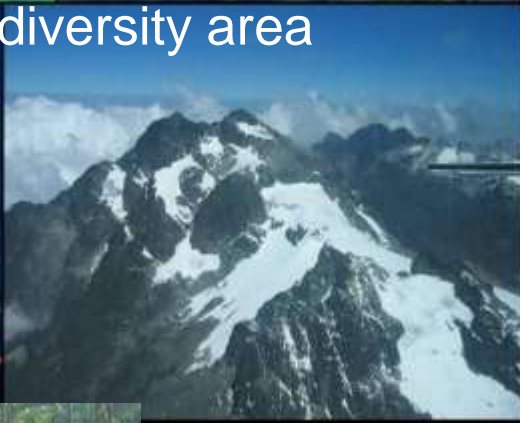
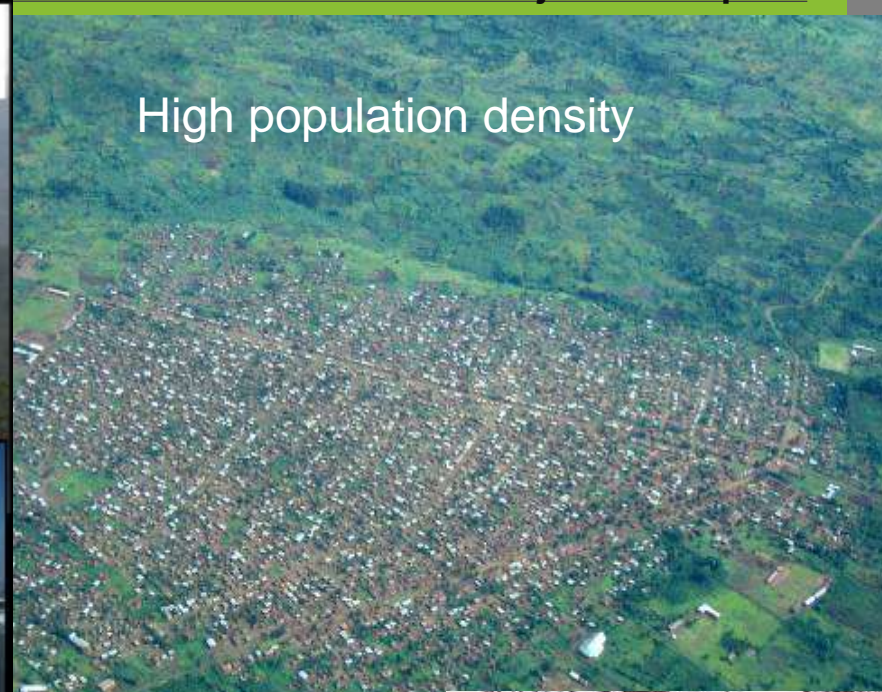




## Overview

1. Project description
2. Link to national process
3. Challenges, barriers, Obstacles





Charcoal exploitation

Armed conflict and Population migration

Poaching

High biodiversity area

High population density



## Drivers of deforestation and degradation







# Activities

## Reforestation



## Secure property right



## Efficient Stoves



## Law enforcement



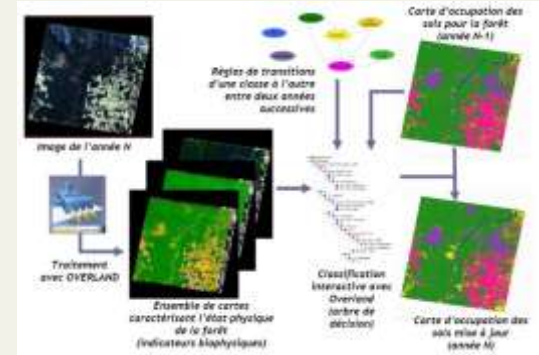
## Incitative



Bussiness opportunity linked to energy crisis (small grant)

## Project Description

## Deforestation estimation



# Link between REDD project and REDD+ National Strategy



1. Updated REDD+ strategies
2. Conducting a participatory process
3. MRV system
4. Benefit sharing scheme
5. Preservation of Biodiversity
6. Afforestation/reforestation
7. Reduction of charcoal demand and increase supply from A/R sources



## Technical



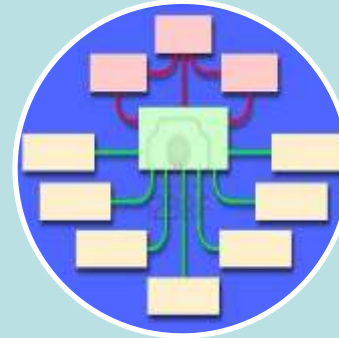
Lack of Quantitative data at local level



National deforestation rate is low (0,22%)



Effective REDD+ approach requires a number of parallel programs in DRC (agriculture, land, justice system , reform of forest service)



complex management scheme for benefit sharing





In crisis or post conflict situation militias or army units are often protected (culture of impunity)



The problem of corruption



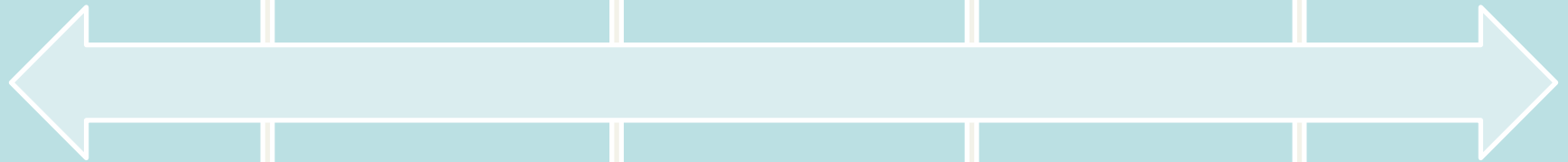
Conflict between central government and provinces (complicating decision making process)



Rights land clarification (legal duality: private ownership and customary system)



Choice of conservation (REDD compensation- Low benefit) is complicated for government compare to gross margin from oil, minerals







# Thank you

---

[www.panda.org](http://www.panda.org)



## WWF IN SHORT

**+100**

WWF is in over  
100 countries, on  
5 continents

**1961**

WWF was founded  
In 1961



**+5000**

WWF has over  
5,000 staff  
worldwide

**+5M**

WWF has over  
5 million supporters