

INDONESIA REDD+:

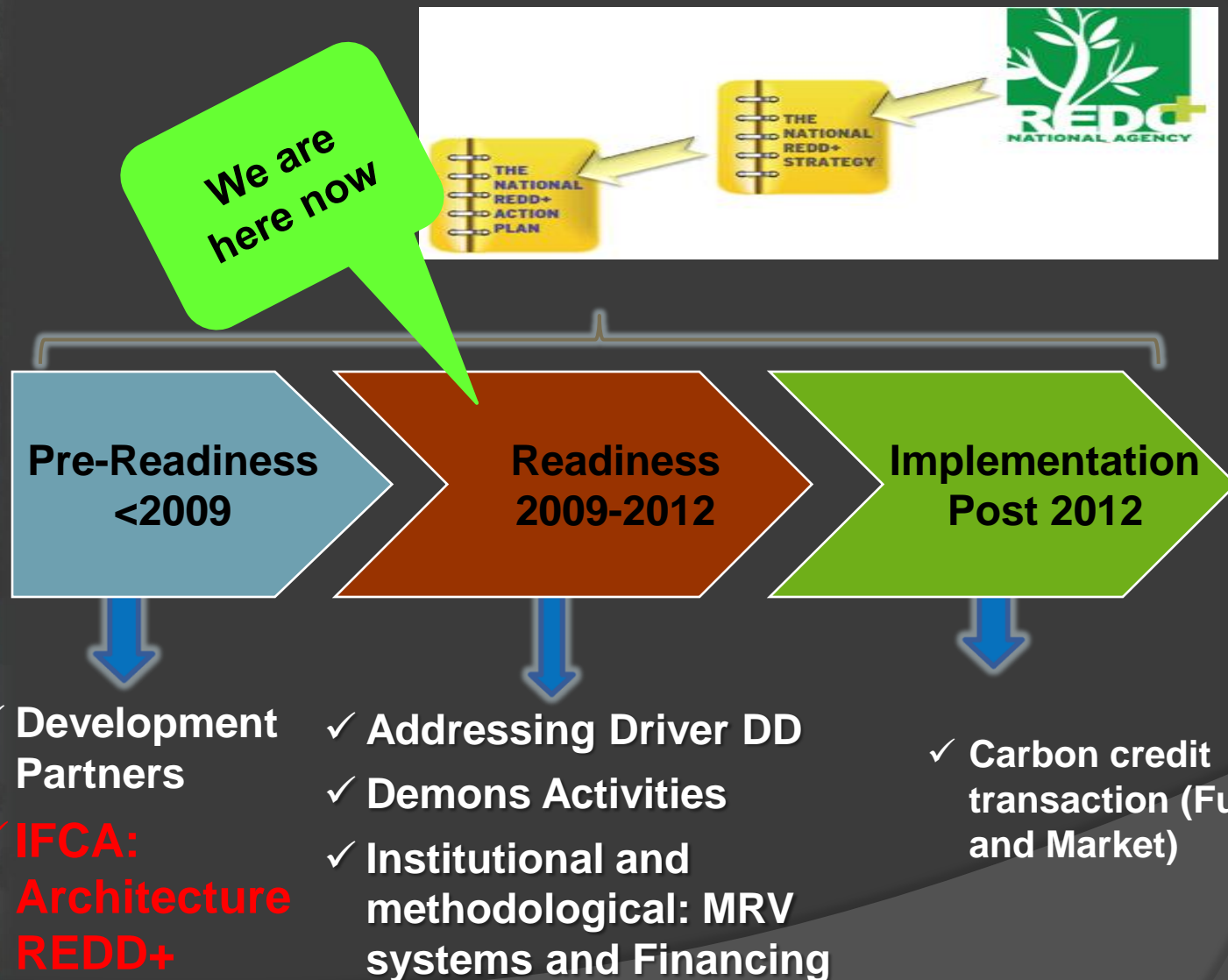
Preparation and Gap for Implementation



Kirsfianti (Etti) Ginoga
Director of Forest Research and Development Agency
Forest Policy and Climate Change Center (PUSPIJAK)

Jl. Gunung Batu No. 5, Bogor 16610.
PO BOX 272. Telp +622518633944; Fax +622518634924
Email: kginoga@indo.net.id;
Website: <http://puslitsosekhut.web.id>

REDD+: Phase Approach, National Accounting Sub National Implementaion

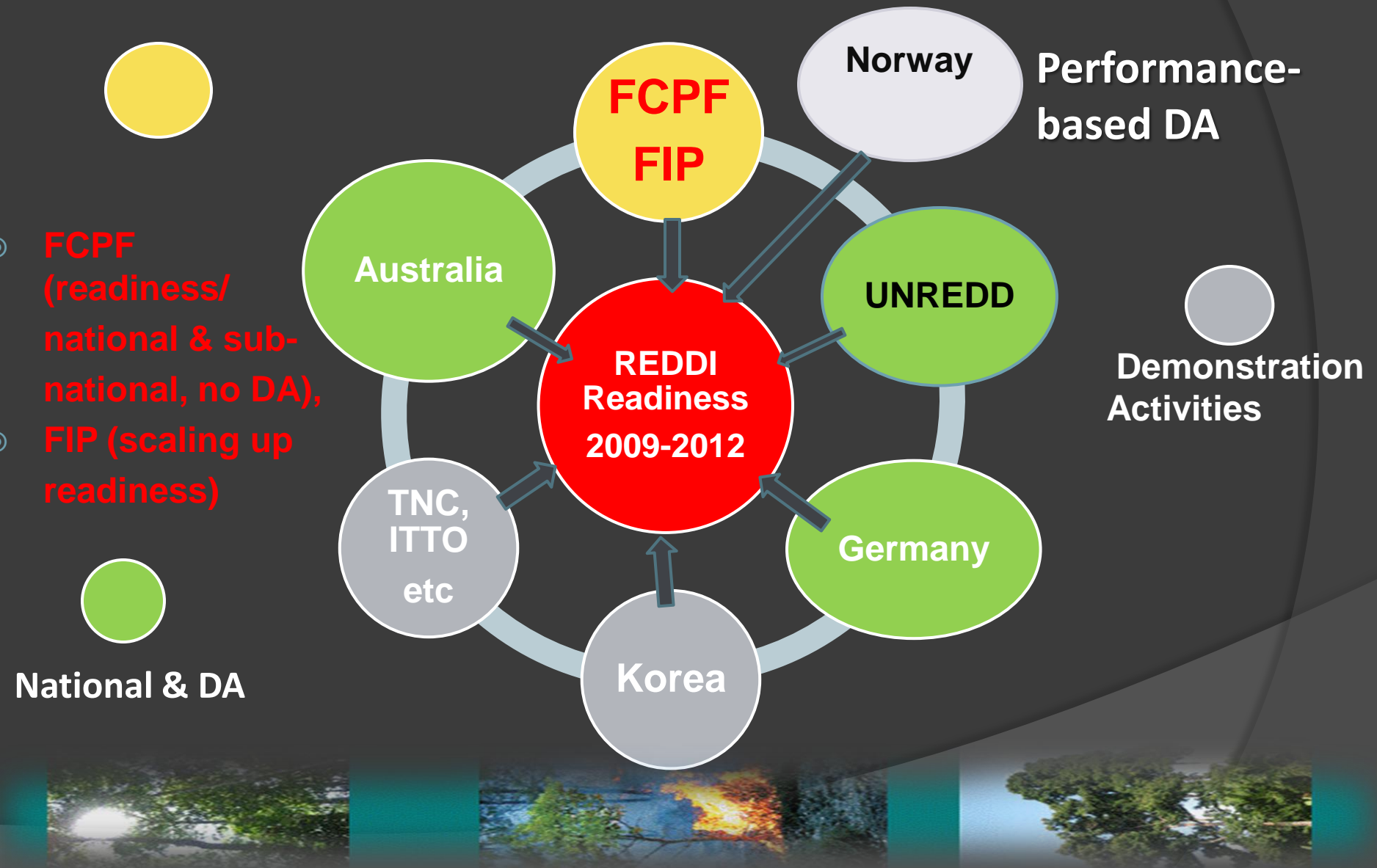


Readiness for REDD+ at National Level

1. National Strategy and Action Plan for REDD+
2. REL/RL National
3. MRV system at National and Sub National level
4. Institutional (Financing including distribution of incentives and responsibilities, capacity building, stakeholders communication and coordination, governance)
5. Safeguard systems

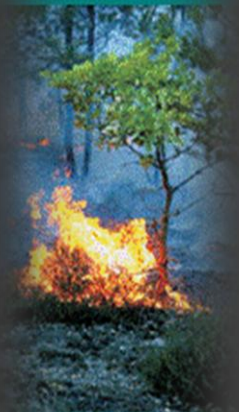


Funding Support For REDD+



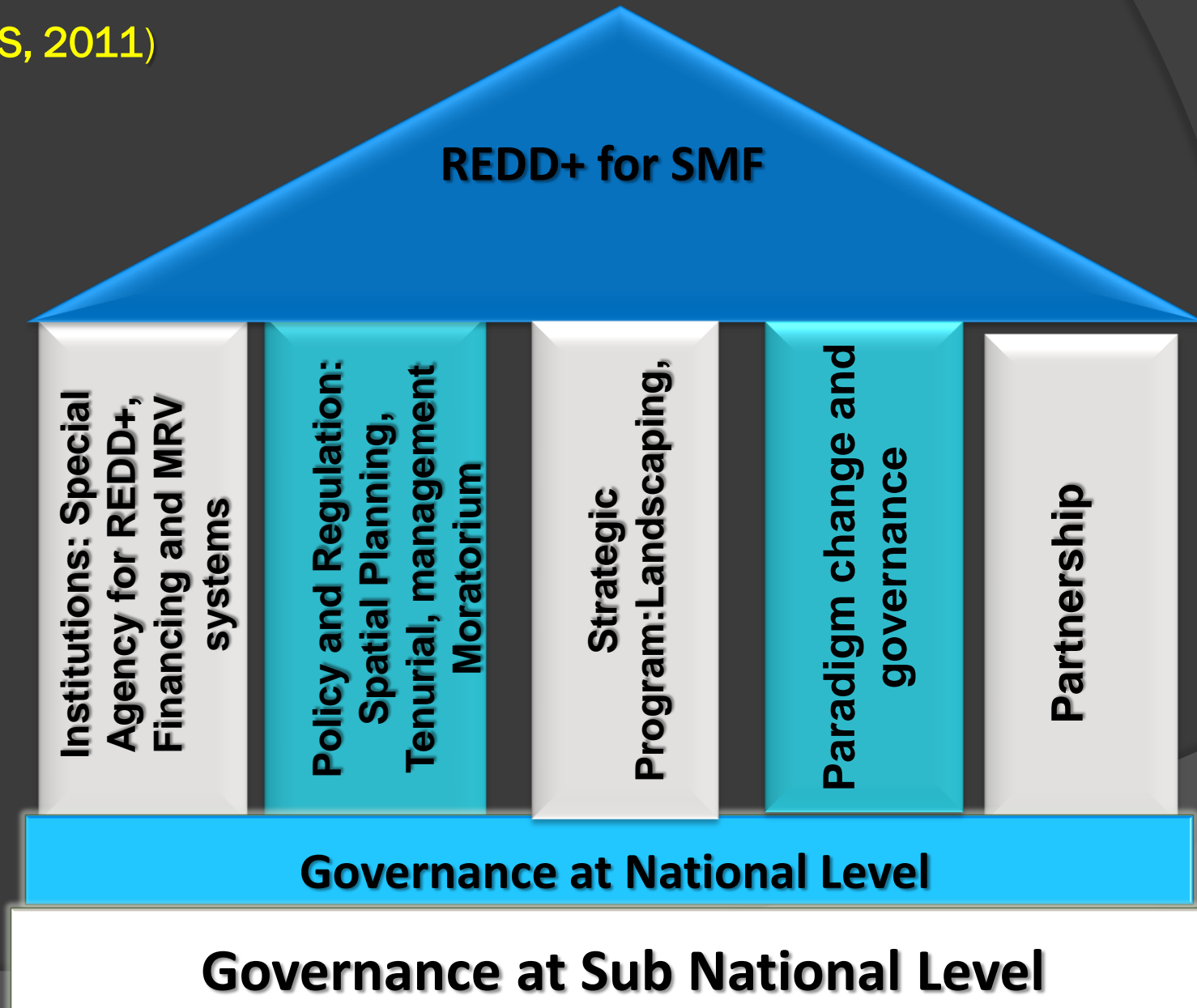
Readiness for REDD+: Progress to Date

- ◎ Presidential Decree 19/2010: Special Agency for REDD+
 - Pilot Province → Central Kalimantan
 - National REDD+ Strategy (2011)
 - Indicative Moratorium Map (Inpres 10/2011)
 - MRV Systems
 - Institutional Arrangement
- ◎ Presidential Decree 61/2011: National Action Plan for Emission Reduction
- ◎ Demonstration Activities

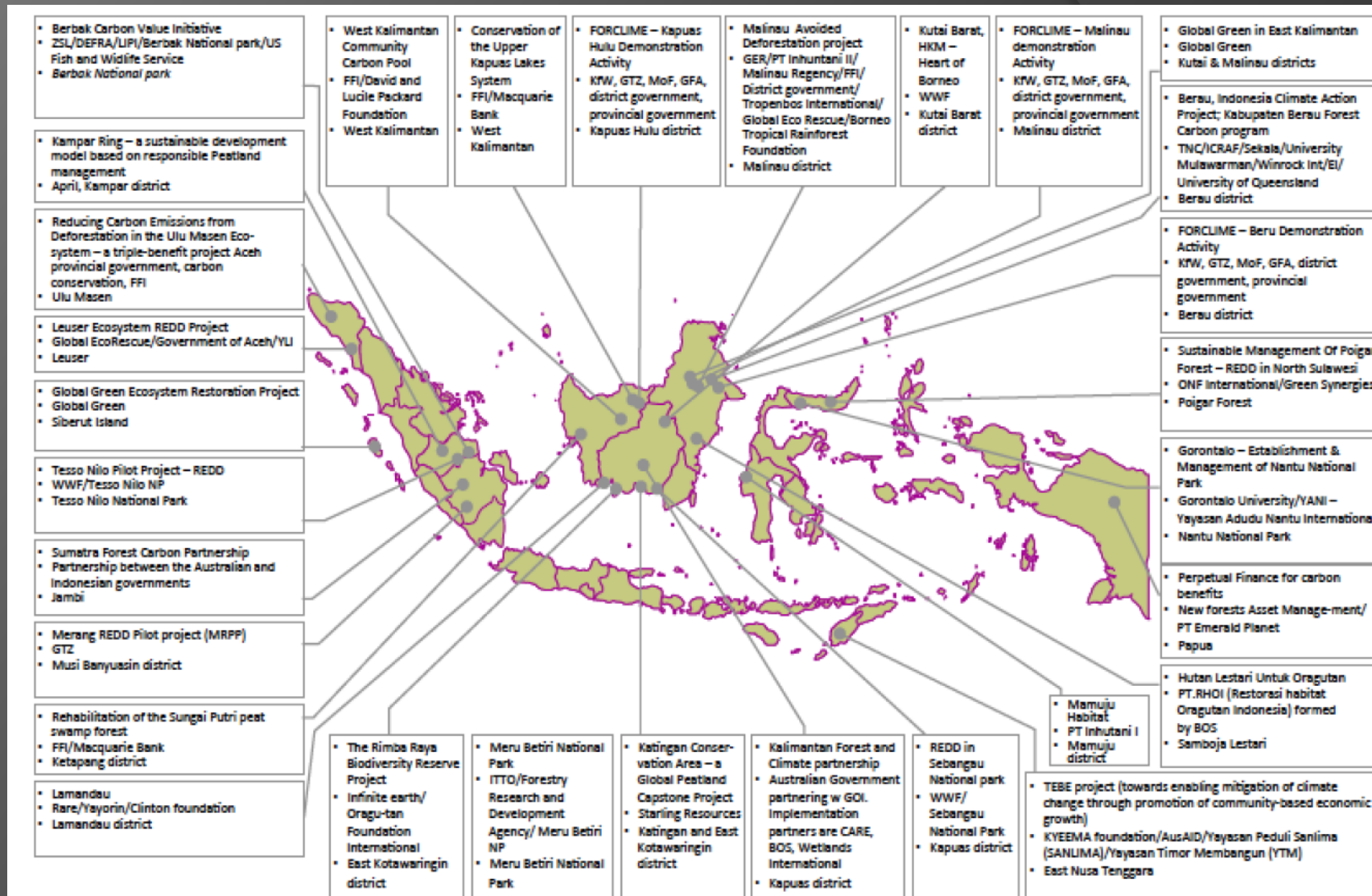


Five Pillars within the Framework REDD+

(NREDD+S, 2011)



REDD+ Initiatives in Indonesia (NREDD+s, 2011)



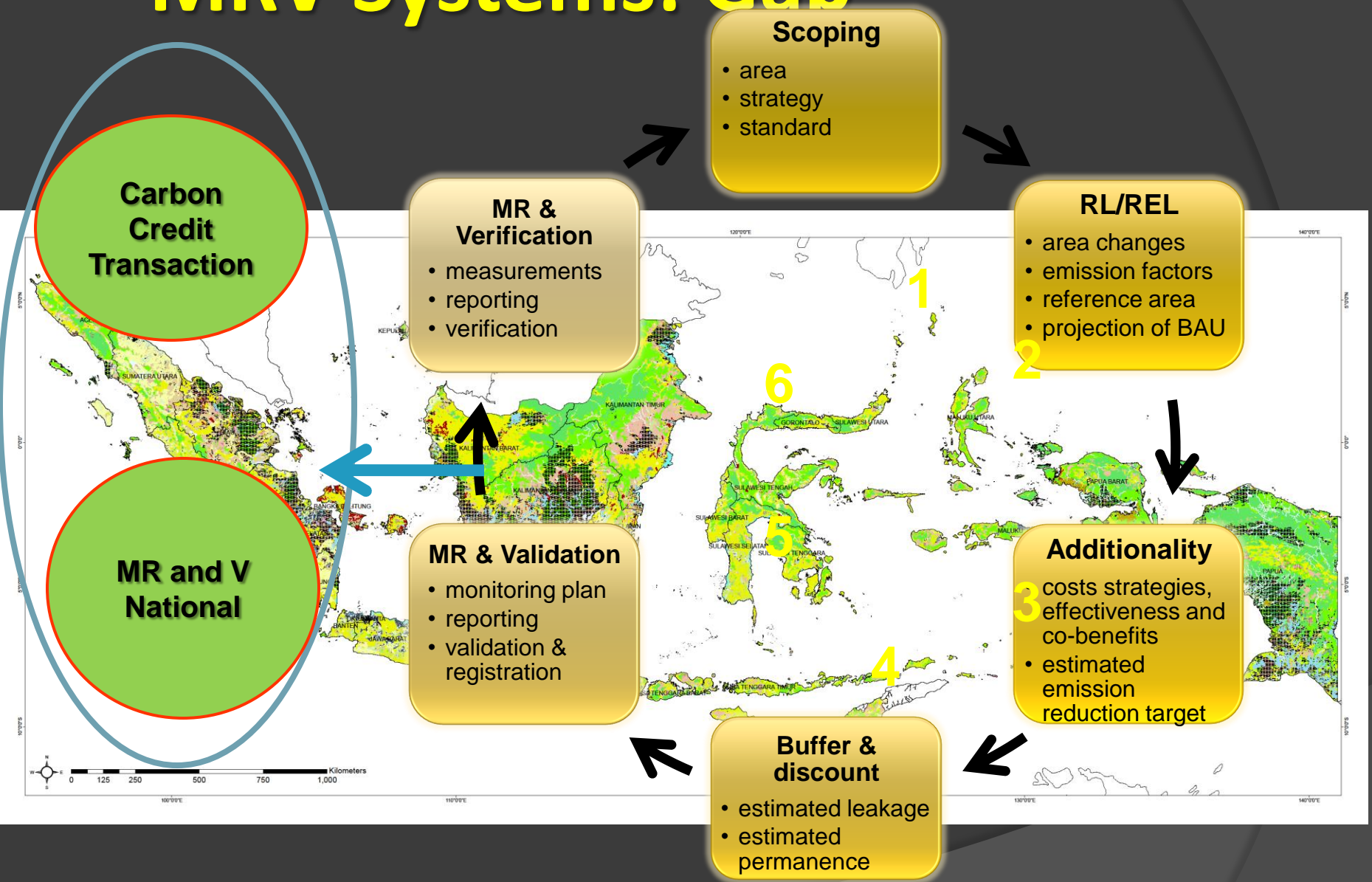
Note: This map was produced by CIFOR and North Carolina State University. Contributors – Sibniali Atmadja, Liwei Lin, Erin Myers, Daju Resosudarmo, Agus Salm, Rathi Septivita, Erin Sills. Contact person – Sibniali Atmadja, s.atmadja@cglar.org. last updated – March 2010

Different Status of DAs





| Good | Moderate | Low | Which DAs? |
|------|----------|-----|------------|
| High | Moderate | Low | |
| High | Moderate | Low | |
| High | Moderate | Low | |
| High | Moderate | Low | |
| High | Moderate | Low | |

MRV Systems: Gap



INDICATIVE MORATORIUM MAP OF NATURAL PRIMARY FOREST AND PEAT LANDS (Inpres 10/2011)



 Natural primary forest
 Peat land

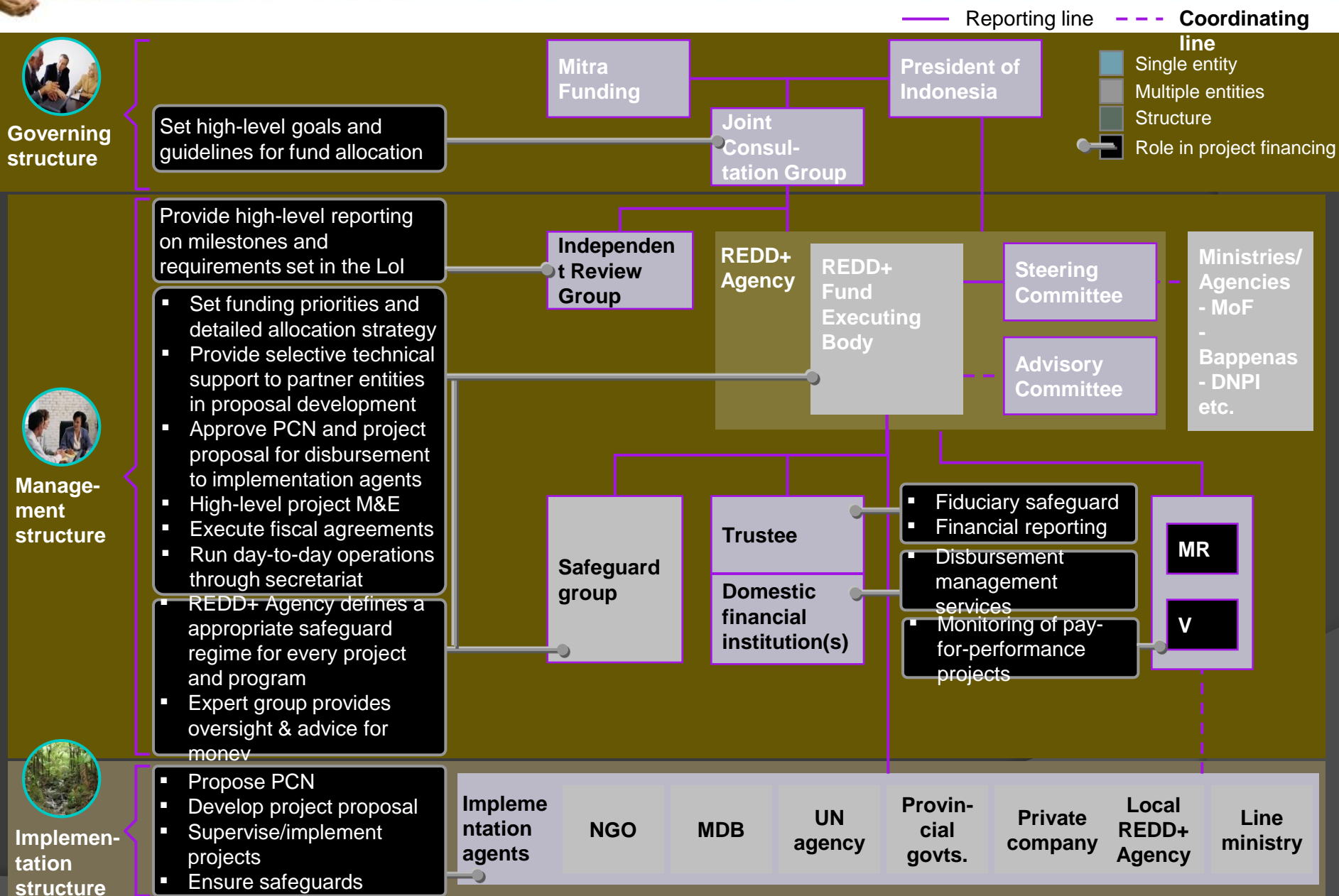
NAP ER: Perpres No. 61/2011

ER in 5 sector in 2020

| Sector | Emission reduction (Gton CO ₂ e) | |
|---------------------------|---|-------|
| | 26% | 41% |
| Forestry and Peat land | 0.672 | 1.039 |
| Agriculture | 0.008 | 0.011 |
| Energy dan Transportation | 0.036 | 0.056 |
| Industry | 0.001 | 0.005 |
| Waste | 0.048 | 0.078 |
| Total | 0.767 | 1.189 |

Identification of sectoral program and budget

Design Institutional Structure





Terima Kasih
Thank You