



vs.



Indonesia

East Kalimantan

Jurisdictional Emission Reduction Program

Dinesh Aryal, Alex Lotsch – WB Task Team



Program Preparation Support

June 2016

ER-PIN accepted (CF14)

November 2016

2nd Readiness Grant signed (AF)

Sept. 2017

R-Package endorsed (PC24)
LOI signed

June 2018

TAP starts

Dec. 2018

Final ER-PD



CF19

10 Technical Support Missions

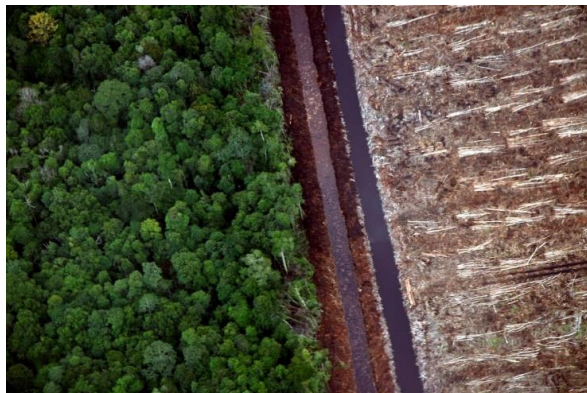


Collaboration with Partners:
GGGI, GIZ , Norway ,TNC,
WWF, others

THE EAST KALIMANTAN ERPA IS PART OF THE SUSTAINABLE LANDSCAPES PROGRAM WHICH AIMS TO ADDRESS CRITICAL DEVELOPMENT ISSUES ...



...with transformational action to reduce poverty, improve governance of natural assets (land, water, forest) and promote shared prosperity



The Sustainable Landscape Program is one of six engagement areas of the World Bank Country Partnership Framework FY16-FY20 agreed between the Government of Indonesia & the World Bank.

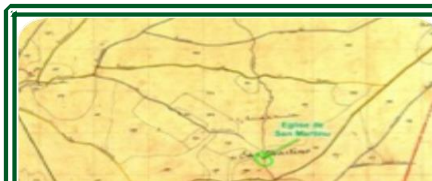
Components and Analytics



Forests, REDD+



Forest Fire Mgmt



Land Governance



Lowlands

Loans, Grants, ERPAs

One Map (IBRD) **Social Forestry (GEF)**

\$200M

\$14.3M (in prep.)

DGM (CIF)

FIP

\$6.5M


\$22.4M

FCPF

BioCF-ISLF

\$8.6M, ERPA

\$13.5M (in prep.), ERPA

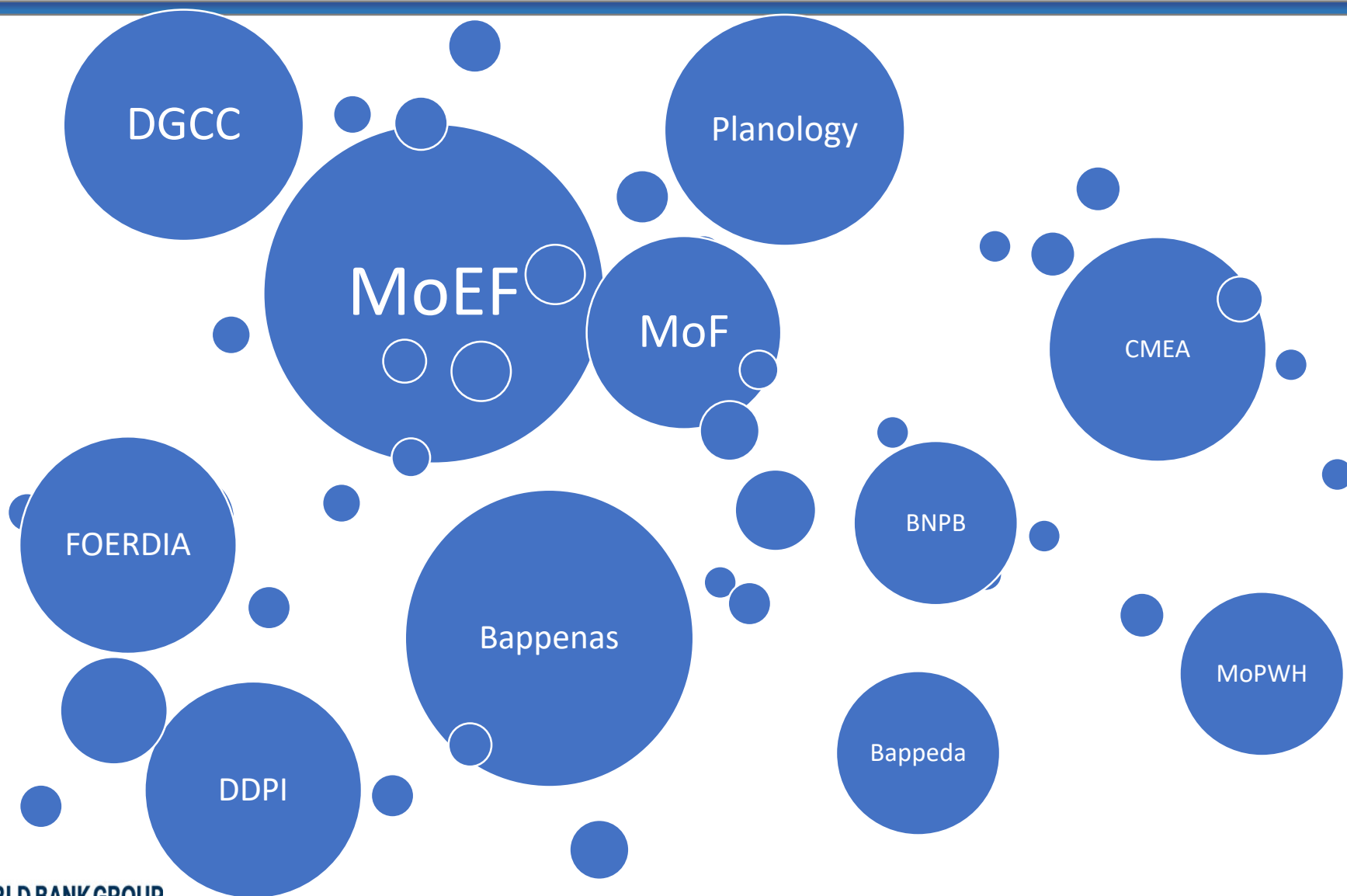

Only source of WB
financing in East Kalimantan

Analytics

Supported by MDTF (\$10.17M)

- Institutional, Expenditure Review
- Wealth Accounting and Valuation of Ecosystems Services
- Fire prevention
- Lowlands governance, management, fiscal policy

Broad Engagement with Government



Status of Due Diligence for the ERPA



WB Management Review

- Concept Note (Nov 2017), WB-Indonesia Country Director
- Quality Enhancement Review (Jan 2019), GP Practice Manager

Current Assessment of Risks (Overall: High)

- High: *Political & Governance, Technical Design, Institutional Capacity for Implementation and Sustainability*
- Substantial: *Sector Strategies & Policies, Fiduciary, Environ. & Social*
- Moderate: *Macroeconomic, Stakeholders*

Govt. of Indonesia needs to further improve

- Safeguard instruments & benefit sharing plan
- Implementation arrangements
- Private sector engagement
- Ability to transfer ER title
- Data transparency: forest monitoring, carbon accounting
- Program financing through Govt. programs and budgets
- Development of Project Operational Manual

Next Steps *(assuming ER-PD is accepted at CF19)*

2019 Timeline	Milestone
March/April	CF19 follow-up mission
April/May	ERPA workshop
May/June	Pre-appraisal mission
July	QER of Advanced Draft BSP
September	Decision Review Meeting
September/October	Appraisal Mission
October	Negotiations conclude
November	World Bank Approval
December	ERPA signature



WORLD BANK GROUP
Environment & Natural Resources



SLMP
INDONESIA
SUSTAINABLE
LANDSCAPE
MANAGEMENT
PROGRAM

Thank you.
Terimah Kasih.

