



Forest Carbon Partnership Facility

Republic of Congo's Emission Reductions Program

Tenth Meeting of the Carbon Fund (CF10)

Bonn

June 16-19, 2014

Republic of Congo's ER-PIN: An Overview

ROC ER-PIN Program in Numbers

| National | |
|---|------------------|
| Size of RoC (ha) | 34 Million ha |
| National Forest Cover (ha) | 21 million ha |
| 2000-2010 Deforestation Rate | 0.065% |
| Est. Population (2014) | 4.66 million |
| | |
| Départemental | |
| Size of Sangha Département (ha) | 5.78 million ha |
| Size of Likouala Département (ha) | 6.57 million ha |
| Est. Population of Sangha Département (2014) | 104,022 |
| Est. Population of Likouala Département (2014) | 218,305 |
| Population Growth Rate of Sangha Département | 2.80% |
| Population Growth Rate of Likouala Département | 5.10% |
| | |
| ER-Program | |
| Program Area Size (ha) | 12.35 million ha |
| Amount of Forest Cover in Program Area (ha) | 11.99 million ha |
| Percentage of Forest Cover (%) | 97% |
| Est. Population (2014) | 322,327 |
| Est. Population (2020) | 416,993 |
| Est. Population increase during Program | 23% |
| Annual Deforestation Rate | 0.036% |
| Sangha / Likouala Historical REL | 6,158,115 |
| ER-PIN Estimated Emission Reductions (2015-2020) (tCO ₂ e) | 11,734,512 |

A PPP between RoC and CIB-OLAM

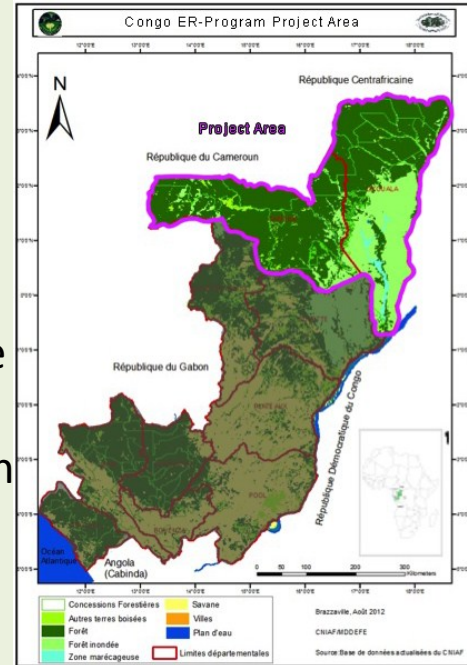
Addresses historical & anticipated future drivers:

- Industrial logging
- Slash & burn agriculture
- Population growth
- Infrastructure expansion
- Oil palm development
- Macro-agriculture

Emission reduction activity:

- Sustainable forest management
- Shade grown cocoa production
- Biochar
- Agroforestry /afforestation / reforestation
- High efficiency cook stoves

Project actors: Private entities, indigenous and community groups, etc



Why is Congo's ER-PIN important for the CF?

Key success factor to halt deforestation is public-private partnership approach, yet concrete examples are rare: Congo's ER-PIN is early mover in that regard building on **long established PPP** with high buy-in from both MEFDD and CIB-OLAM

Innovative solutions: test biochar at large scale using industrial logging waste (i.e. carbon storage, enhanced yields, alternative to slash & burn agriculture)

Importance of the Republic of Congo ER-PIN

Potential of ER-Program to **foster policy reform and change land use trajectory** (palm oil threat in Africa)

Enhanced south-south learning and potential for regional cooperation through COMIFC and CBFP with two contiguous countries

Strong Political Commitment

Strong political will of the Republic of Congo on Sustainable Forest Management & Protection Activities

- 2000 – Forest Code updated in 2000
- 2005 – National norms established for forest management planning
- 2010 - RoC has signed a VPA with EU and strong synergies exist with FLEGT and REDD+. CIB-OLAM has been an active FLEGT partner
- 2006 - First FSC concession in Congo Basin (CIB)
- 2010 - 2.5 million ha of FSC certified forest concession
- 2010 – Decree for development and implementation of local development fund and benefit sharing scheme
- 2011– Law No. 5/2011 “Indigenous Rights Promotion and Protection”
- 2013 - First in-country REDD+ project
- 2014 – 4.5 million hectares of protected area, or 13% of the country
- 2014 - Validation of “Forest Policy” and new “Forest Code” (inclusive of REDD+ and PES)
- 2014 – Finalization of “National REDD+ Strategy” and SESA

Consultations and Participation

CACO-REDD – The National & Départemental REDD+ Platform since 2010

- Represents 120 civil society groups including environmental organisations, indigenous peoples groups, forest dwellers, women's groups and other REDD+ stakeholders
- Systematic consultations with CN-REDD on a monthly basis, documentation available from CN-REDD
- CACO-REDD supports the ER-PIN and REDD+ in Congo, e.g. responses to CF10 validated in May 2014

- REDD+ communication strategy and plan endorsed
- Civil society participates in all working groups on REDD+ deliverables



Forum on Indigenous Peoples



- First African country that passed legislation on participation of indigenous peoples in decision-making: Law No. 5-2011 of 25 February 2011
- FIPAC – International Forum on Indigenous Peoples and Local Communities, initiated by RoC
- 3 FIPAC meetings in RoC, now recognized by COMIFAC and scaled up to international level
- FIPAC ensures IP participation in REDD+ process, while REDD+ valorizes IP knowledge at the same time

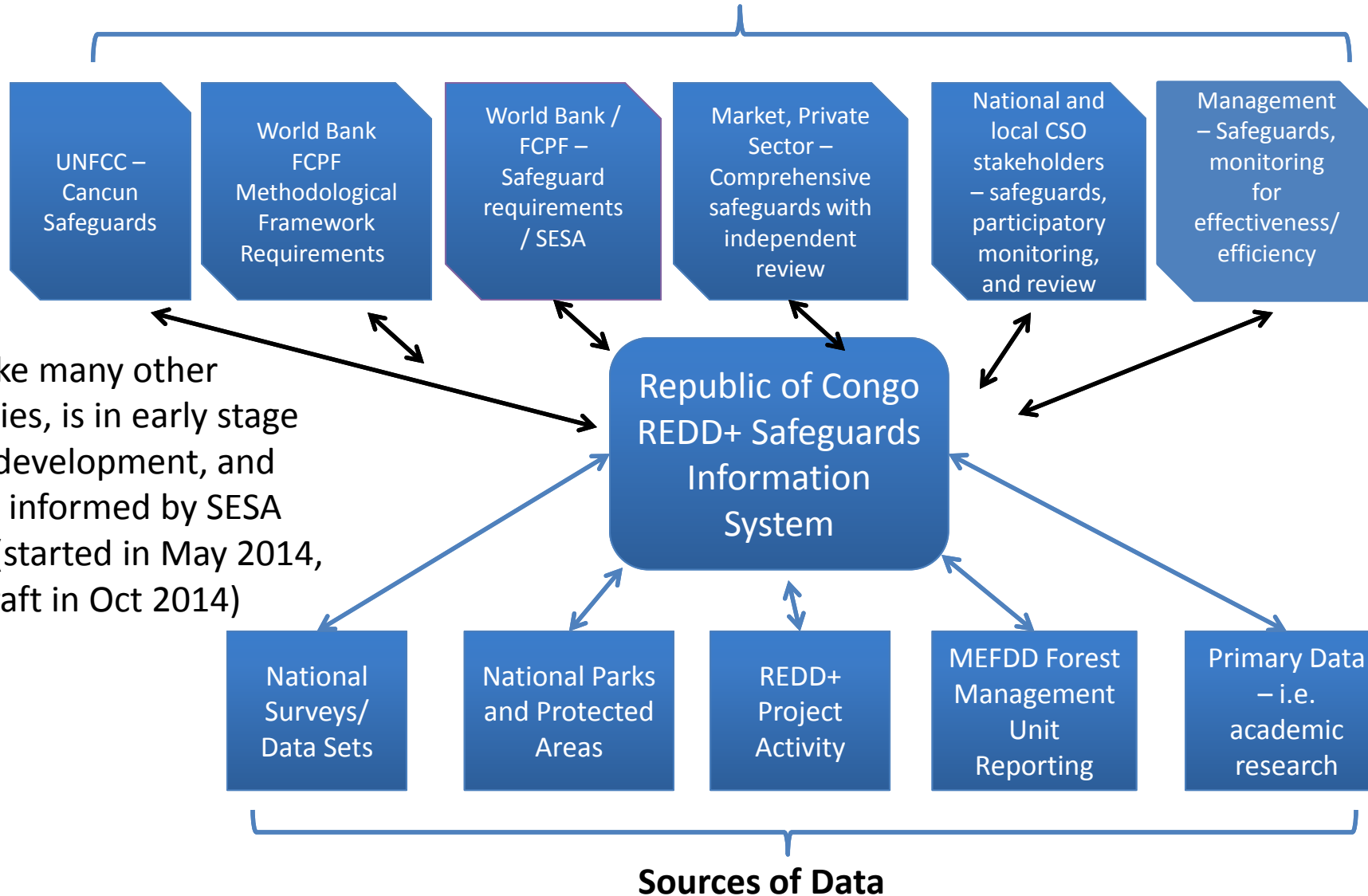
Update on REDD+ Readiness

| REDD+ Readiness Studies | Status Update |
|--|---|
| I <u>Spatial Drivers of Deforestation and Forest Degradation with options for the national REDD+ Strategy</u> | <ul style="list-style-type: none">• Completed and validated May 2014 |
| II <u>“Proposed Future Investments in the Départements of Likouala and Sangha Regarding the Reduction of Emissions from Deforestation and Forest Degradation.”</u> | <ul style="list-style-type: none">• Began in May 2014,• Scheduled to be finished in September 2014 |
| III <u>Options for Development of the implementation Framework of the National REDD+ framework</u> | <ul style="list-style-type: none">• Began in April 2014• Intermediate report delivered in June 2014• Final report due in September 2014 |
| iv <u>“Social Environment Strategic Assessment”</u> | <ul style="list-style-type: none">• Contract is signed,• Work to begin June 2014• Scheduled to be completed in September 2014 |

- Decree for the National REDD+ Committee has been drafted and is currently awaiting formal endorsement by the Council of Ministers

Republic of Congo ER-PIN Safeguard Information System

SIS – OBJECTIVES & USES



RoC, like many other countries, is in early stage of SIS development, and will be informed by SESA study (started in May 2014, first draft in Oct 2014)

Republic of Congo ER-PIN

REL - HFLD Justification

No Forest Left Behind
PLoS Biology
(da Fonseca et al., 2007)

>50% Forest cover

<0.22% Deforestation

Norway Options
Assessment Report
(Angelsen et al., 2009)

>50% Forest cover

<0.50% Deforestation

Republic of Congo:

- 21 million hectares of forest cover
- 65 percent of the nation's land mass
- Deforestation rate of 0.065% between 2000-2010.

| Source of Future Emissions | Annual Future Emissions (tCo2e) |
|--|---------------------------------|
| Sangha & ATAMA Palm and Natianal Road Constrcution | 7,161,663 |
| Sembe Oil Palm & Macro Agriculture | 5,567,871 |
| Combined Population Growth | 922,838 |
| Aggregated Upward Adjustment | 13,652,372 |

Upward HFLD Adjustment

- The RoC chose the maximum cap of the upwards adjustment of 0.1% of 2010 carbon stock, which is 5,112,412 tCO₂e per year.
- Justified because of an anticipated 13.65 tonnes per annum of future emissions from planned and unplanned deforestation from 2014-2020
- All upward adjustments will be supported by documentation during the design phase

Republic of Congo ER-PIN

Historic REL 2000-2013 (revised ER-PIN version)

$$\text{Historical REL} = \text{REL}_{\text{UNDEF}} + \text{REL}_{\text{PLDEF}} + \text{REL}_{\text{PLDEG}}$$

Historic Reference Emission Level

The Reference Period will be 14 years from 2000-2013 in order to account for emissions associated with planned and unplanned plantations and infrastructure development.

Congo's unique circumstances are that it has historically low deforestation, however since:

- 2011 substantial road building has occurred in Sangha Dept.
- 2012 ATAMA Palm has begun land-clearing to begin operations
- 2012 Sangha Palm has begun land-clearing to begin operations

The 2000-2013 RoC Historical REL will consist of:

1. 2000-2010 remotely sensed data (for 2013, data to be added during the design phase) for deforestation
2. 2000-2013 planned degradation (nat. harvesting data)
3. 2011-2013 Planned deforestation (road building and oil palm plantations)

Congo has included three years of known planned deforestation from 2011-2013 in order to include recent conditions and improve the accuracy of the REL.

| Historical REL Component | Average Annual REL (tCO2e) |
|--|----------------------------|
| Unplanned Deforestation (REL _{UNPLDEF}) | 2,100,051 |
| Planned Degradation (REL _{PLDEG}) | 2,851,791 |
| Planned Deforestation (REL _{PLDEF}) | 1,206,273 |
| | |
| Total Aggregated Sangha & Likouala Historical REL | 6,158,115 |
| | |
| Annual Aggregated Upward Adjustment for Planned and Unplanned Future Deforestation | 13,652,372 |
| Capped Adjustment to REL (0.1% of 2010 carbon Stock) | 5,112,412 |
| | |
| Total Aggregated Sangha & Likouala REL including HFLD Adjustment | 11,270,527 |

Republic of Congo ER-PIN

Historic REL 2000-2012 (CFP comment on MF)

$$\text{Historical REL} = \text{REL}_{\text{UNDEF}} + \text{REL}_{\text{PLDEF}} + \text{REL}_{\text{PLDEG}}$$

Historic Reference Emission Level

The Reference Period will be for 13 years, from 2000-2012 in order to account for emissions associated with planned and unplanned deforestation and infrastructure development.

The 2000-2012 RoC Historical REL will consist of:

1. 2000-2010 remotely sensed data (for 2013, data to be added during the design phase) for deforestation
2. 2000-2012 Planned degradation (nat. harvesting data)
3. 2011-2012 Planned deforestation (road building and oil palm plantations)

Congo's unique circumstances are that it has historically low deforestation, however since:

- 2011 substantial road building has occurred in Sangha Dept.
- 2012 ATAMA Palm has begun land-clearing to begin operations
- 2012 Sangha Palm has begun land-clearing to begin operations

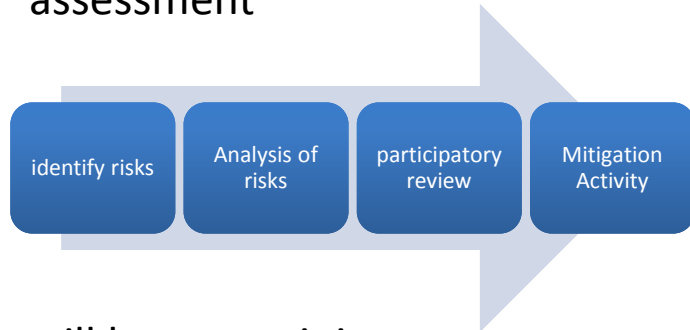
As such, Congo has included two years of known planned deforestation from 2011-2012 in order to include recent conditions and improve the accuracy of the REL.

| Historical REL 2000-2012 | Average Annual REL (tCO2e) |
|---|----------------------------|
| Historic Unplanned Deforestation (REL _{UPLDEF}) | 2,100,051 |
| Historic Planned Degradation (REL _{PLDEG}) | 2,641,963 |
| Historic Planned Deforestation (REL _{PLDEF}) | 655,376 |
| | |
| Total Aggregated Sangha & Likouala Historical REL | 5,397,390 |
| | |
| Adjustment to REL (0.1% of 2010 carbon Stock) | 5,112,412 |
| | |
| Total Aggregated Sangha & Likouala REL, including HFLD Upward Adjustment | 10,509,802 |

Republic of Congo ER-PIN

Program Risk Mitigation (Displacement & Leakage)

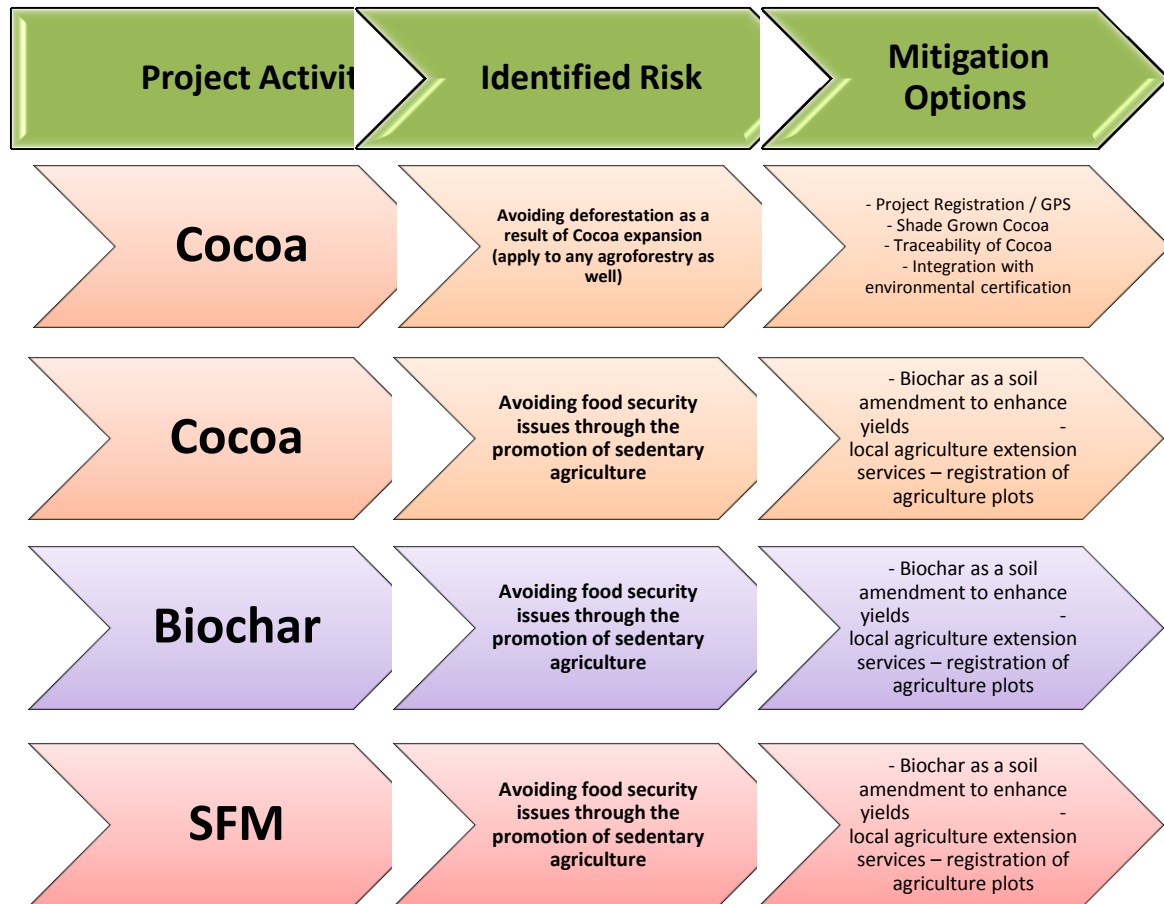
Each project Activity will conduct a displacement & leakage assessment



will have at minimum one corresponding risk mitigation approach/activity.

Monitoring Techniques:

- Leakage belt
- Monitoring of concessions (logging, mining, oil palm)
- VCS style risk buffer account



Approach to Address the Oil Palm Threat (1)

Legal framework for REDD+ emerging to influence strategic land use decisions:

1. Revised Forest Code (2014)

2. National Forest Policy 2014-2025

→ both endorsed in June 2014 by ministries (agriculture, mining, forestry, land use etc.), private sector and civil society

→ to be followed by legal decrees

→ priority will be given to REDD+ activities to address climate change

30

Article 164 : Les programmes d'afforestation, de reforestation et de suivi de la régénération naturelle des forêts sont exécutés sous l'autorité de l'administration des forêts, par des personnes physiques ou morales, publiques ou privées, selon les normes définies par voie réglementaire.

Un décret pris en Conseil des ministres fixe ces normes en fonction de leur champ d'application et définit les conditions de mise en place des plantations.

Article 165 : La réalisation des activités d'afforestation ou de reforestation est soumise à l'obtention d'un agrément délivré par l'administration en charge des forêts dans les conditions fixées par voie réglementaire.

Article 166 : Les personnes et les communautés qui réalisent des afforestation ou des reforestations bénéficient de tout ou partie, des produits forestiers qui en sont issus, dans les conditions fixées par voie réglementaire.

Les communautés locales et les personnes physiques ont l'obligation de déclarer annuellement leur plantation auprès de la direction départementale de l'économie forestière dans un délai de 8 mois suivant la fin de la plantation.

L'exploitation desdits produits doit être effectuée dans le respect des dispositions de la présente loi et de ses textes d'application, notamment en ce qui concerne le respect des titres d'exploitation spécifiques aux plantations tels ainsi que de celles relatives à la protection de l'environnement.

Article 167 : L'Etat facilite le financement des opérations d'afforestation et de reforestation, suivant les conditions fixées par voie réglementaire.

D'autres sources de financement accompagnent et appuient le budget public.

Article 168 : L'acquisition des terrains boisés, des terrains à boiser et la réalisation des travaux forestiers bénéficient des mesures d'encouragement fiscal particulières, définies par décret pris en Conseil des Ministres.

Article 169 : L'exercice des activités d'afforestation ou de reforestation bénéficie d'une fiscalité incitative.

TITRE VII : DE LA LUTTE CONTRE LE CHANGEMENT CLIMATIQUE ET DU PAIEMENT POUR SERVICES ENVIRONNEMENTAUX

Article 170 : L'élaboration des politiques, des stratégies, des plans nationaux d'action, des plans d'aménagement et des réglementations pour la gestion durable des écosystèmes forestiers, ainsi que la réalisation des travaux de sylviculture, prennent en compte la préservation de la biodiversité et la lutte contre le changement climatique.

A cet effet, le ministère en charge des eaux et forêts, de concert avec tous les autres acteurs concernés, réalise ou encourage les programmes liés à cette question, la recherche sur les impacts actuels et futurs possibles du changement climatique sur ces écosystèmes.

Approach to Address the Oil Palm Threat (2)

1. Revised Forest Code Article 171 – 178, for instance:

- Government will elaborate REDD+ strategy with concerned administrations, private sector and civil society, to be approved by ministerial decree
- Government will establish new structures mandated to implement the national REDD+ strategy, e.g. National REDD+ Committee

2. National Forest Policy 2014-25 favors REDD+ agenda and strong commitment, among others, to:

- Finalize national REDD+ strategy
- Revise decrees on overlapping permits (agriculture, forestry, etc.)
- Reallocate plantations
- Establish national PES fund

- consolider les aires protégées et gérer durablement celles existantes ;
- mobiliser des surfaces pour les plantations forestières (bois d'œuvre et bois énergie) et agroforestières ;
- gérer durablement les ressources forestières ;
- organiser les filières durables de bois-énergie et développer l'usage de la biomasse ;
- améliorer les systèmes de production agricole.

b) Les enjeux

La stratégie nationale REDD+ est en cours d'élaboration. Des projets REDD+ sont entrepris à l'initiative du secteur privé. La baisse (ou la maîtrise) de la déforestation et de la dégradation nécessite une coordination des différentes politiques publiques qui affectent les forêts. Des incitations directes à la conservation et au reboisement doivent être proposées aux acteurs locaux, ainsi que des itinéraires techniques agricoles et pastoraux à la fois plus intensifs et écologiques. La consommation de bois énergie progresse au rythme de la population et les couronnes de déboisement et de dégradation autour des agglomérations s'étendent, nécessitant des actions tant du côté de l'offre (plantations, carbonisation améliorée) que de la demande (foyers améliorés, alternatives énergétiques).

c) La stratégie retenue

Le processus REDD+ (Réduction des émissions liées à la déforestation et la dégradation des forêts dans les pays en développement), implique de prendre en compte l'ensemble des politiques qui affectent les forêts (politiques agricoles, aménagement du territoire, mines et énergie, infrastructures...). Il s'agit donc d'un processus qui doit être coordonné au plus haut niveau de l'Etat et donner lieu à des concertations interministérielles permanentes dès lors qu'une politique sectorielle est susceptible d'avoir un impact sur les forêts. Cette stratégie sera complétée par des incitations directes aux acteurs dont les pratiques affectent la déforestation et la dégradation.

La MEFDD donne la priorité à la constitution du domaine forestier permanent, et prépare un programme national de paiements pour services environnementaux, qui servira à produire des résultats mesurables au niveau national. Le Congo donne la priorité au niveau national par rapport aux projets REDD+, qui seul permet de combattre les causes de la déforestation et de la dégradation.

d) La mise en œuvre de la stratégie

Elle doit passer par les points suivants :

- finaliser la stratégie nationale REDD+ ;
- actualiser le décret sur la superposition des permis miniers, forestiers, agricoles, etc. ;
- préparer du programme national de Paiement pour Services Environnementaux intégrant l'évolution des pratiques agricoles ;
- mettre en place un Fonds pour la rémunération des services environnementaux, alimenté par les industries extractives, la subvention de l'Etat et les contributions des partenaires internationaux ;
- classer les forêts pour la constitution du Domaine Forestier Permanent ;
- lancer un programme pour la régularisation des exploitants et scieurs artisanaux ;
- mobiliser les terres pour les plantations ;

Approach to Address the Palm Oil Threat (3)

Potential to use new legal framework and in particular the ER program to:

- Reorient existing and already allocated concessions towards sustainable production and minimized deforestation
 - put safeguards in place
 - Set-aside areas
- Reorient the allocation of new concessions to degraded lands
 - Research on new palm oil hybrids
 - Supported by National Program on A/R (ProNAR)
- Discuss a moratorium on new concessions in National REDD+ Committee

Strategy to Enhance Capacities and Expedite REDD Progress

Congo's strategy to further enhance REDD+ capacities:

- Apply for additional USD \$5 million from FCPF
- Use this, among others, to employ one more CN-REDD staff in Brazzaville to oversee, guide and monitor progress on readiness in 2014-2015
- Employ a coordinator within CN-REDD specifically for design phase
- CN-REDD coordinator to actively promote the national REDD+ agenda (based on new forest policies, revised Forest Code and national REDD+ strategy) through National REDD+ Committee

CIB-OLAM Approach to Advance ER-PIN

After RoC ER-PIN enters the Pipeline, CIB-OLAM will initiate executive level meetings with Minister Djombo

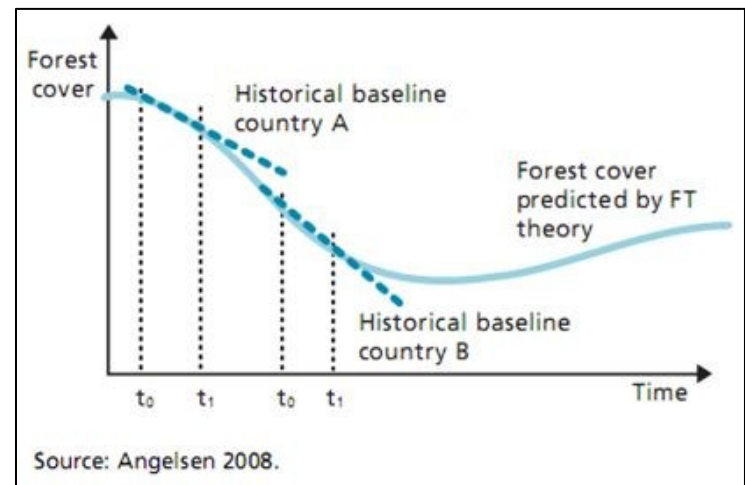
Following points will be raised to trigger change:

1. CIB-OLAM will make available one additional person for design phase
2. Begin formal coalition building with key private actors to change land use trajectory of concessions
3. Proactive close coordination with CN-REDD to ensure efficient progress
4. Integrate and share CIB-OLAM experience with: FPIC, benefit sharing & Grievance Redress Mechanism
5. Potential for CIB-OLAM to scale up its in country emission reduction activity

Summary

Republic of Congo offers:

1. Use of the ER program to promote policy reforms to address palm oil threat, based on new National Forest Policy (2014-2025) and Revised Forest Code (2014)
2. Showcase what a public-private partnership means in practice
3. Achieve on time delivery of REDD+ Readiness and ER-Program based on strengthened CN-REDD capacities



Thank You

