



Forest Carbon Partnership Facility

SESA(Strategic Environmental and Social Assessment) **and**
ESMF(Environment and Social Management Framework) **for**
REDD+ Readiness

Fernando Loayza, Sr. Environmental Economist, AES, World Bank

Bogota, Colombia | 3 December 2013

Outline

1. Rationale and outcomes of
SESA/ESMF in REDD+
2. SESA/ESMF Process
3. Conclusion
 - Relationship between SESA and the REDD+ strategy

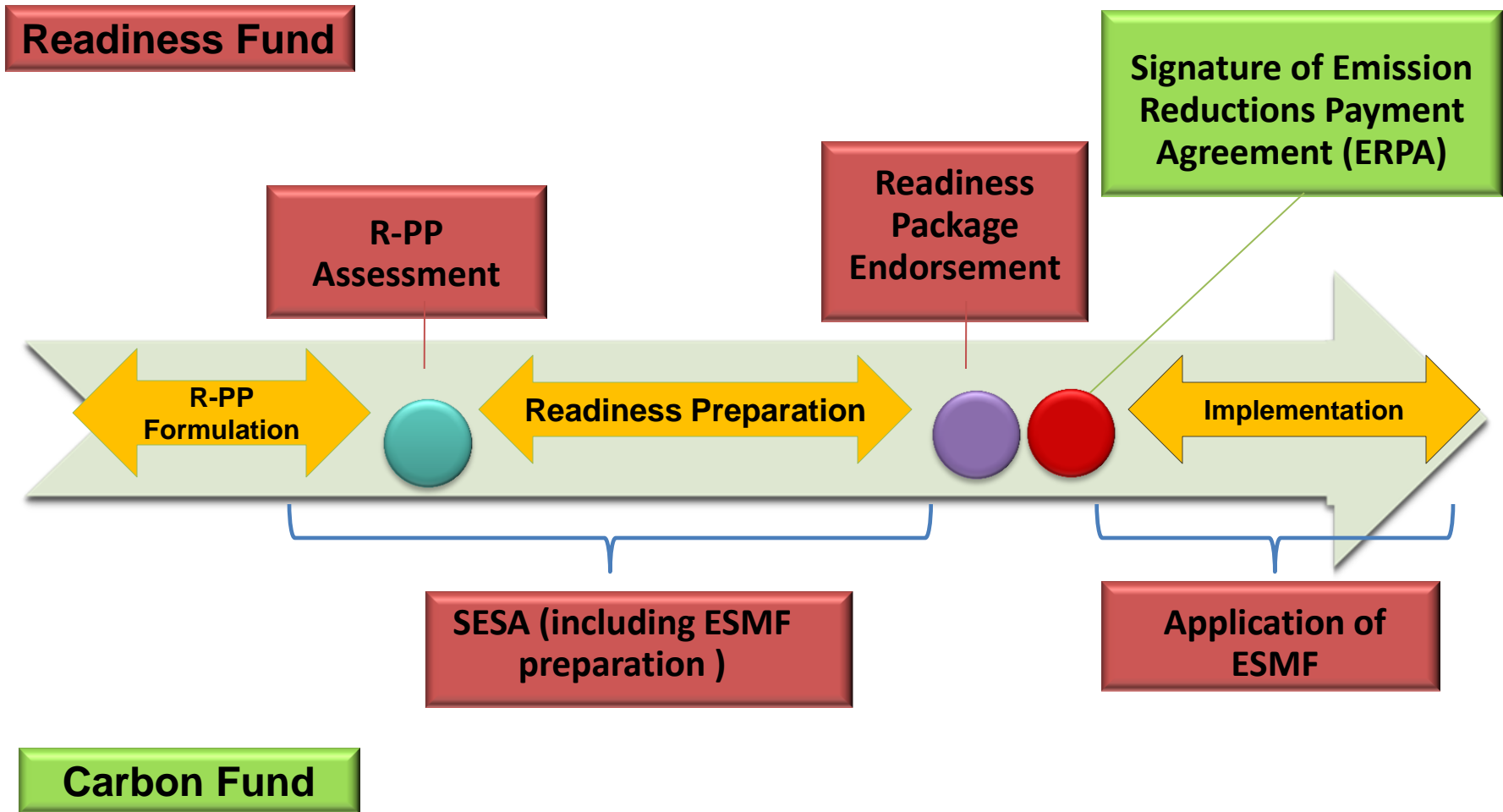
A central challenge of the Readiness Preparation process:

- REDD+ Readiness Preparation mainly consists of strategic planning leading to development of policies, programs, institutions and a set of actions to be implemented in the future
- The critical question: How can we ensure that the REDD+ Strategy is environmentally and socially sustainable?
 - The agreed solution for the FCPF: SESA

What is SESA?

- SESA is a process that combines analytic and participatory approaches to:
 - integrate environmental and social consideration in the ***formulation*** of the REDD+ strategy (SESA's strategic dimension)
 - develop a framework to manage the potential risks/impacts of policies, actions and projects during the ***implementation*** of the REDD+ strategy

The FCPF Approach to E&S Sustainability



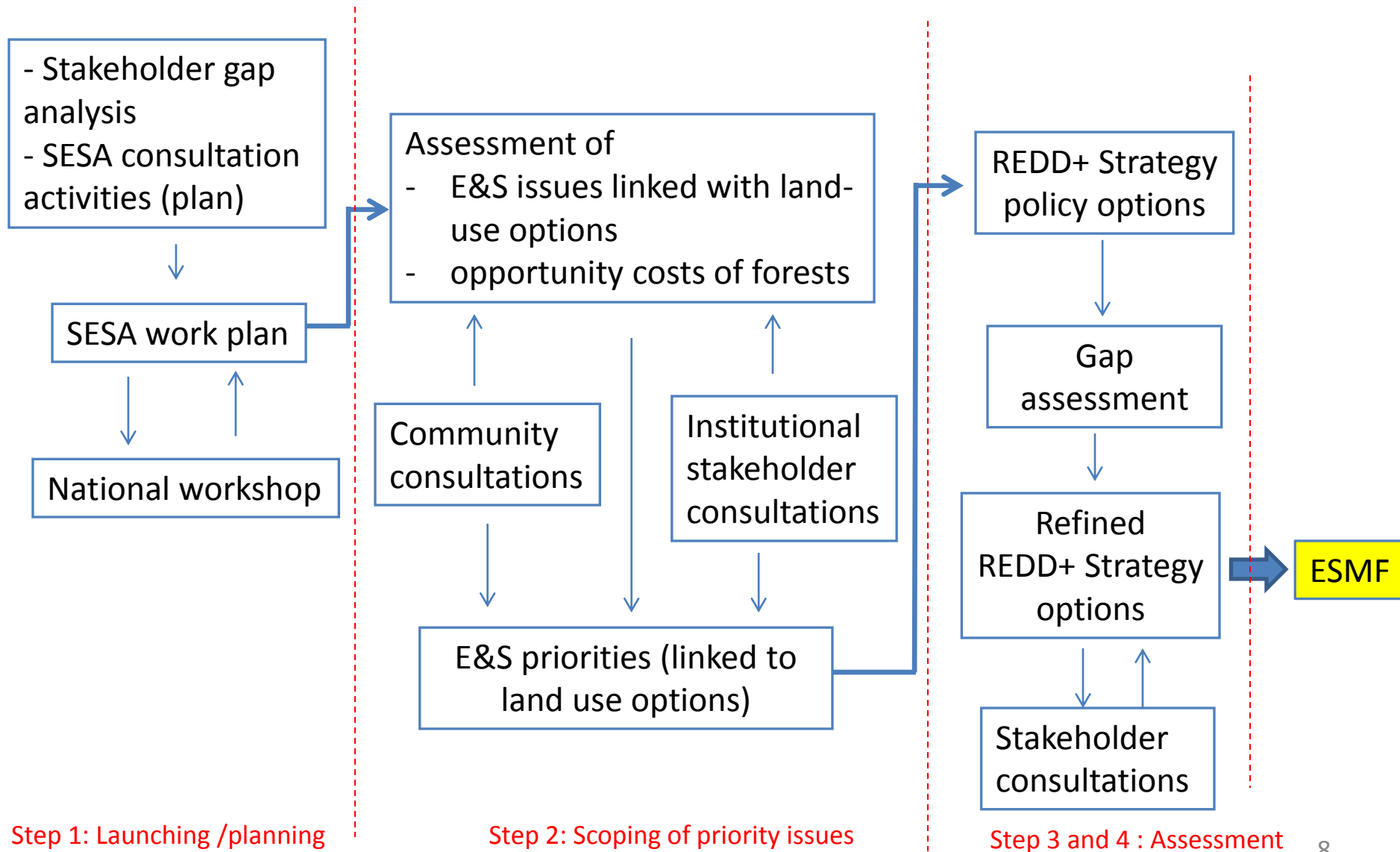
SESA/ESMF in REDD+ Rationale

- SESA strategic dimension helps in refining the REDD+ strategy by making it responsive to
 - E&S priorities in land use, and
 - the opportunity cost of conserving forests
- ESMF establishes the framework for E&S management of future projects, policies and activities through which the REDD+ strategy is implemented
- ESMF is prepared when REDD+ strategy has been refined
- SESA/ESMF ensures that REDD+ increases social, cultural, and environmental good whilst avoiding or mitigating harm

SESA/ESMF in REDD+: Expected Outcomes

- **Land-use planning.** Land use options in the REDD+ strategy are responsive to the opportunity costs of forests and E&S sustainability
- **Rights.** REDD+ strategy recognizes and respects rights to forest resources (including customary claims by forest dependent peoples)
- **Compliance.** REDD+ strategy adheres to relevant international environmental and social safeguards
- **Good governance.** REDD+ strategy is implemented in the context of broader good governance objectives including transparency and accountability
- **Participation and adequate information.** All relevant stakeholders have the opportunity to participate fully and have timely access to appropriate and accurate information

SESA/ESMF Process



Step 1: Planning/Launching

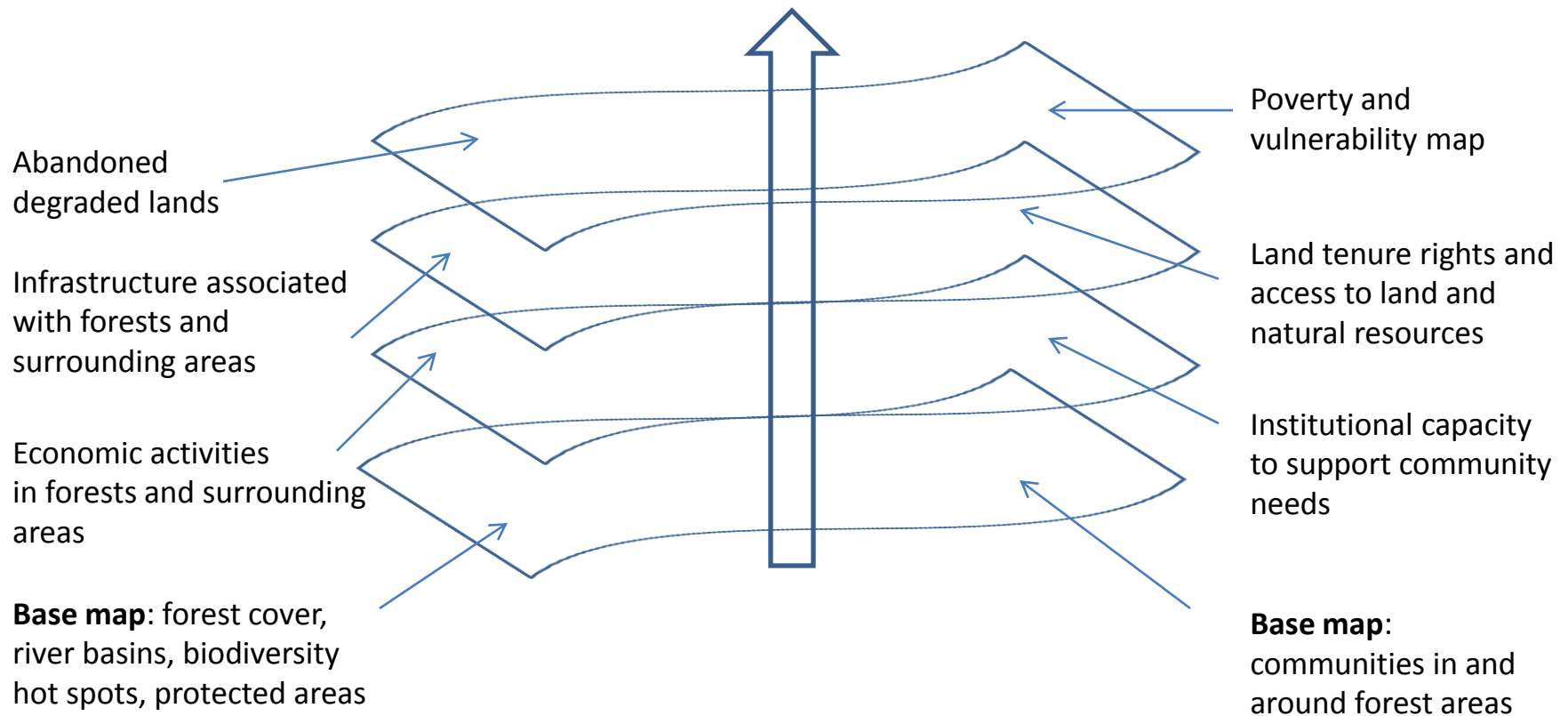
- Objective
 - Engage all key stakeholders in the SESA process
- Process
 - Consultants undertake stakeholder analysis and propose consultation activities for SESA
 - A national workshop is held
 - SESA's public participation and consultation process is defined under the framework of REDD+ consultation process
 - Legitimacy and representativeness of stakeholders are discussed and rules of participation agreed among stakeholders
- Expected outcomes
 - SESA is launched
 - SESA work plan, which includes SESA's consultation activities within the overall REDD+ consultation plan, is finalized and publicly disclosed

Step 2: E&S priorities in land use

- Objective
 - Identify land use options with optimal environmental and social benefits at the local, regional and national levels
- Process (facilitated by the consultants)
 - Priority environmental and social issues currently affecting land use are identified
 - Environmental and social benefits and costs of conserving forests are evaluated
 - Stakeholders are consulted both as a source of information on key issues and to reveal their preferences, concerns and expectations
 - Consultation processes for local stakeholders (including indigenous communities) and institutional stakeholders are undertaken
- Expected outcome
 - A **shared vision** by all key stakeholders on how REDD+ could contribute to development that is environmentally sustainable and socially inclusive

Step 2: Scoping of priority issues

Environmental and social priorities
geographically referenced

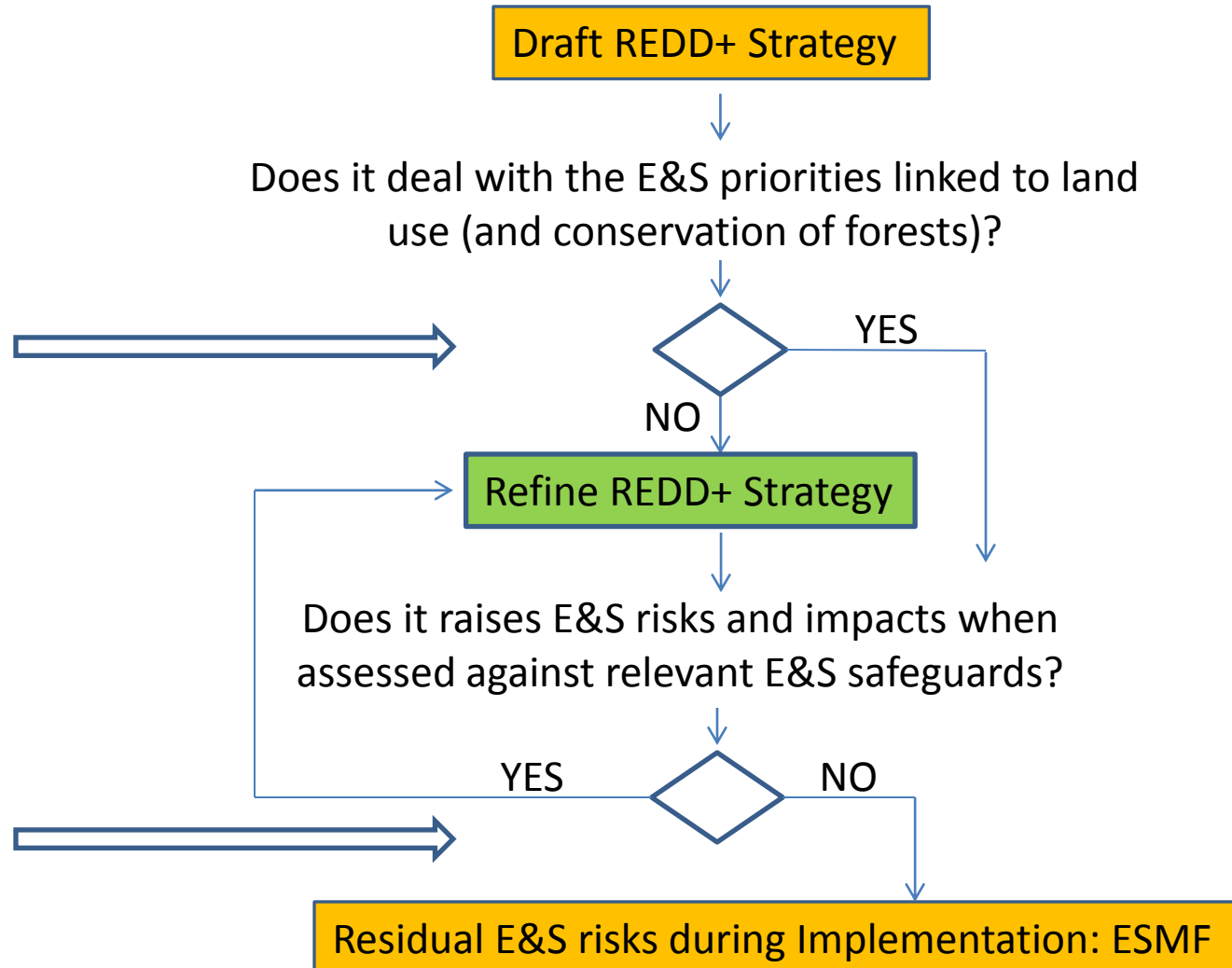


Step 3: Assessment

- Objective
 - Refine REDD+ strategy to promote the adoption of land use options with environmental and social benefits at the local, regional and national levels
- Process
 - Consultants undertake analytical work to assess gaps on
 - the proposed REDD+ strategy to promote environmentally and socially sustainable land use options
 - environmental and social management systems for potential impacts associated with the REDD+ strategy
 - Consultants propose legal, regulatory, institutional, policy and capacity adjustments to be included in the REDD+ strategy to address the identified gaps
 - Adjustments include measures with implementation schedule, responsible organization, investment and recurrent costs and, potential sources for funding
 - Results of the gap assessment and recommended measures are consulted with stakeholders
 - ESMF, which deals with E&S residual risks during REDD+ strategy implementation, is formulated by the Consultants and consulted with the stakeholders
- Expected outcome
 - Shared vision of stakeholders on REDD+ is materialized in the REDD+ strategy

Step 3 : Assessment

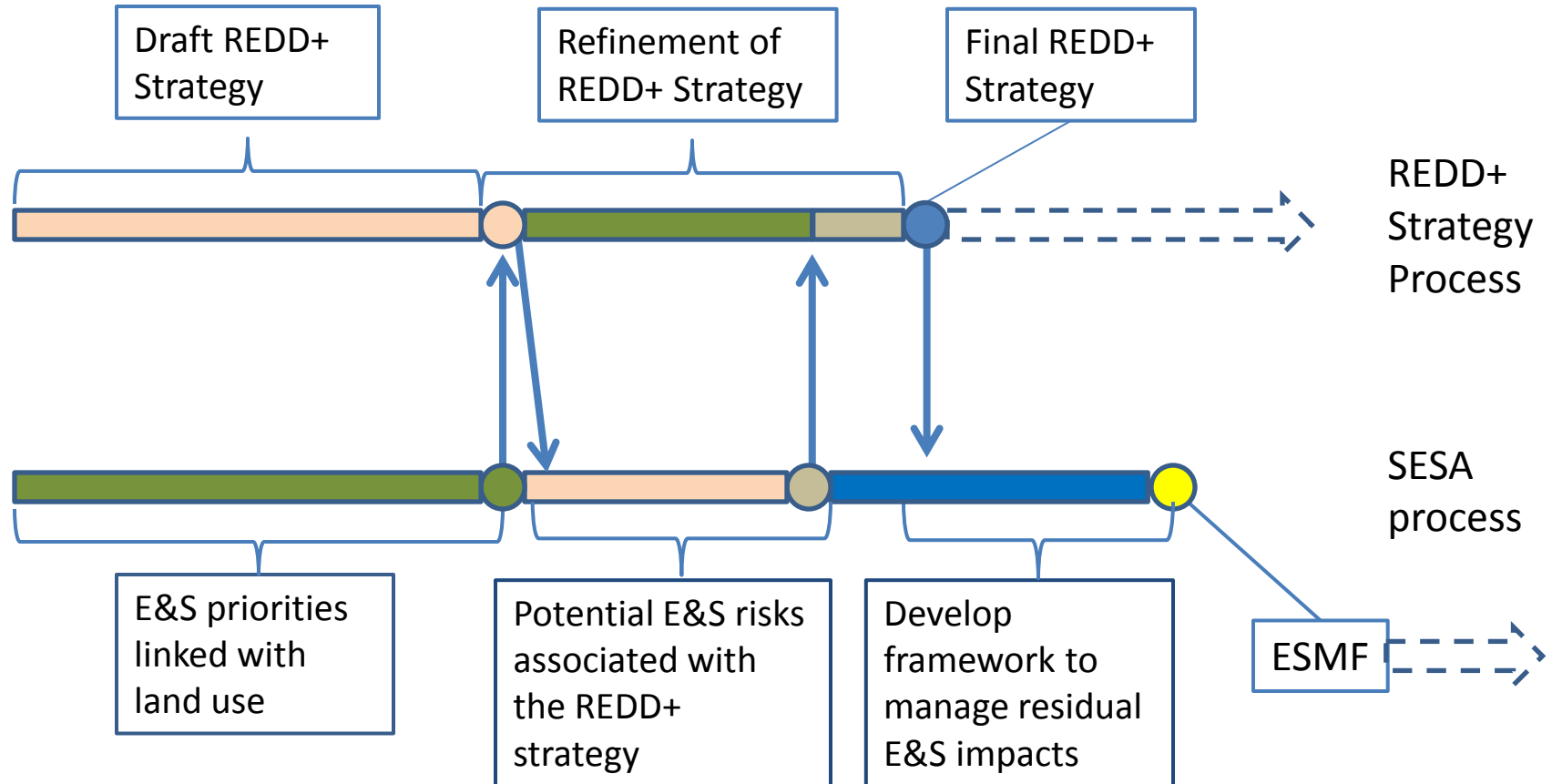
Two – level consultation: (i) local stakeholders (including indigenous communities); and (ii) institutional stakeholders



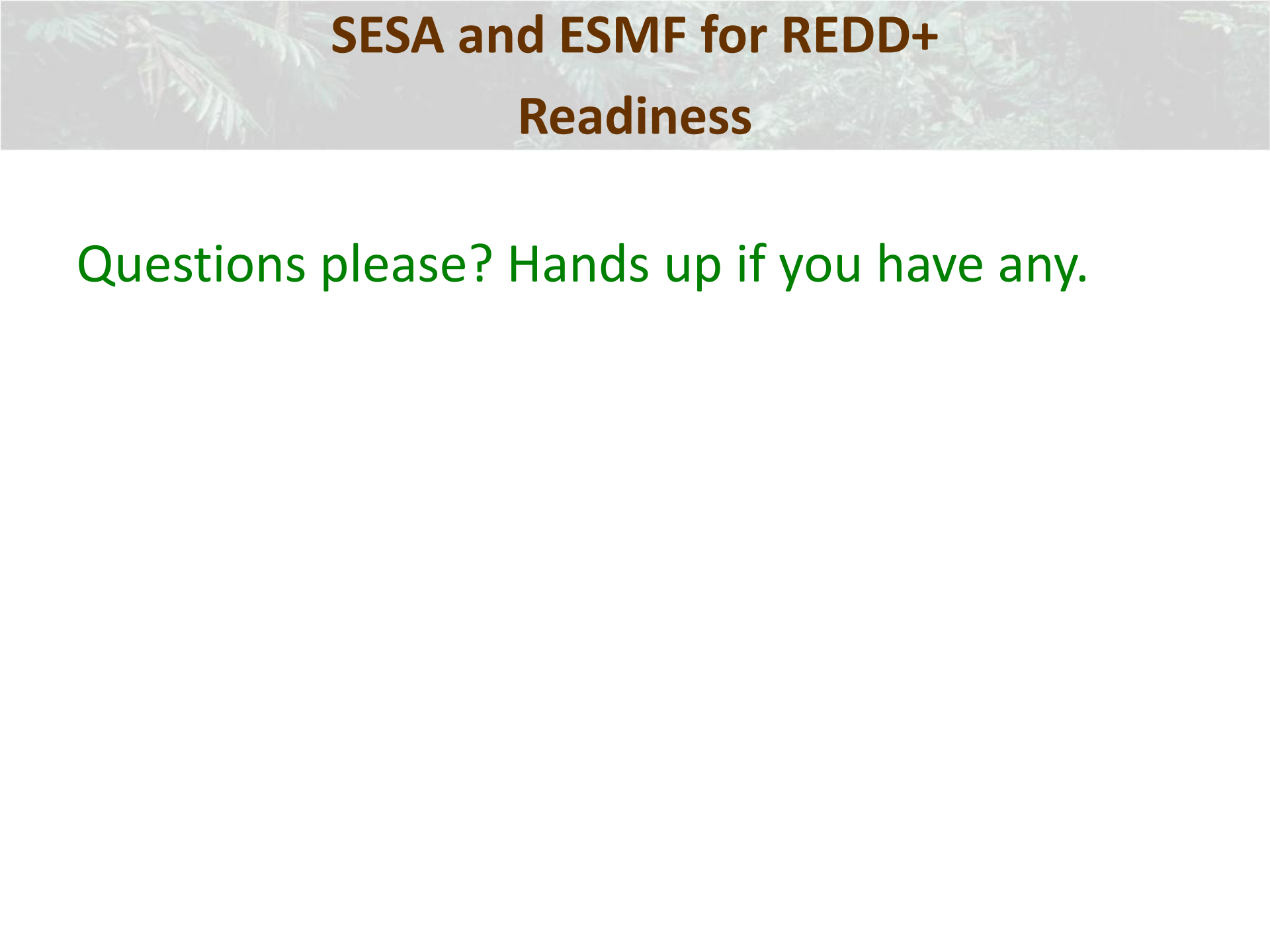
Environmental and Social Management Framework (ESMF)

- Discusses the legal, regulatory and policy regime within which the strategy will be implemented
- Discusses potential E&S residual impacts of the implementation of the REDD+ strategy
- Describes the arrangements to manage these residual impacts and the requirements for their implementation
- Should be widely consulted, refined through the consultations and disclosed

As a way of conclusion



Filled colour: type of information flowing in each process



SESA and ESMF for REDD+ Readiness

Questions please? Hands up if you have any.