

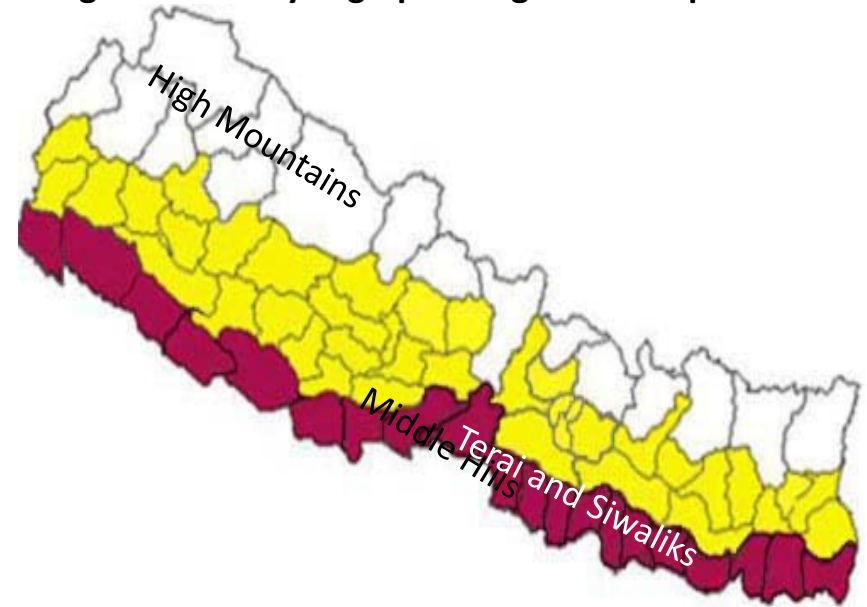


Government of Nepal  
Ministry of Forests and Soil Conservation



Nepal's Readiness Preparation Proposal  
REDD  
2010 - 2013

Figure 2a.1: Physiographic Regions of Nepal



FCPF/PC 6  
Guyana  
29 June 2010

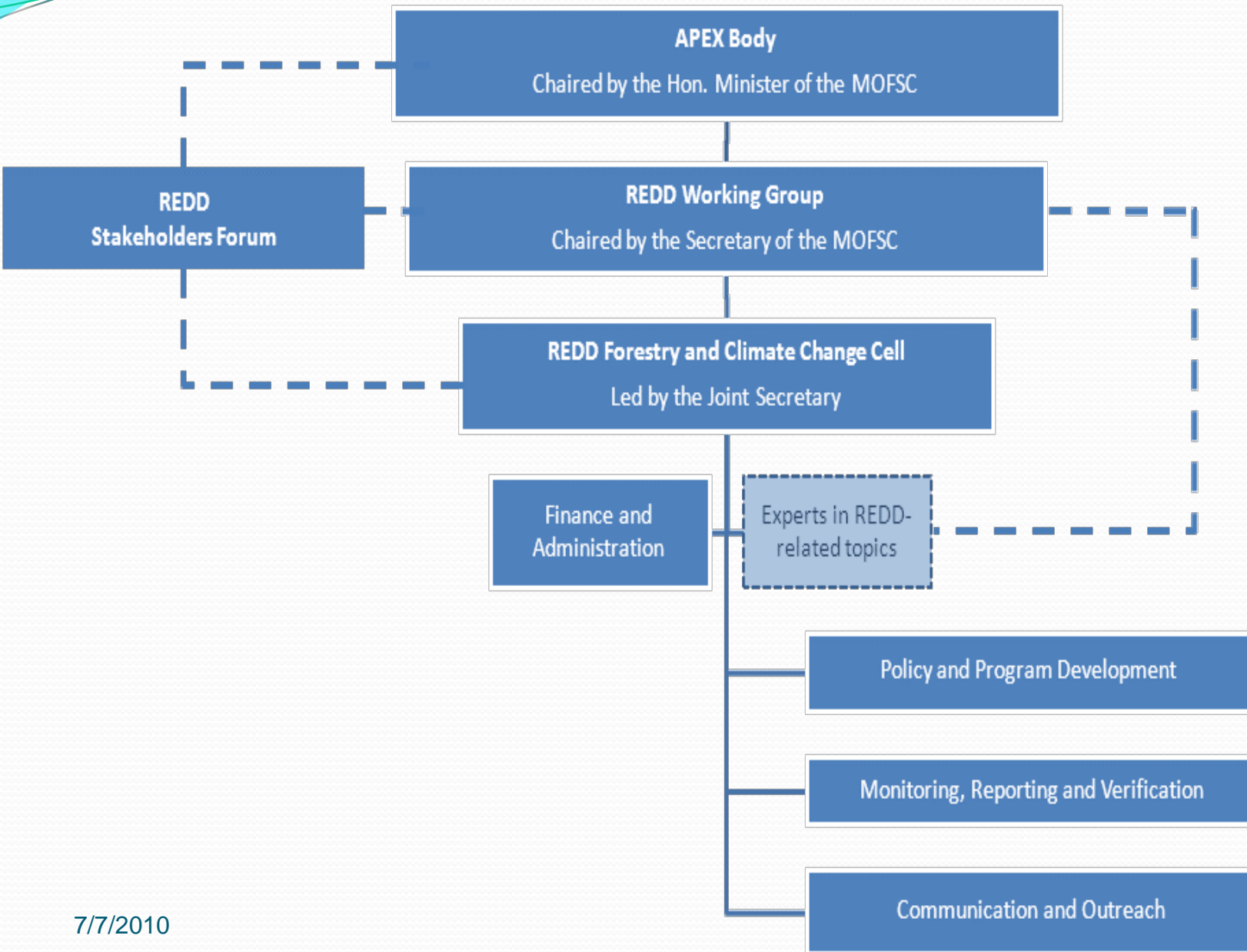
# Vision

- By 2013 and beyond, our greenhouse gas emissions resulting from deforestation and forest degradation, will be significantly reduced by forest conservation and enhancement by addressing the livelihoods concerns of poor .

# Principle

- Mainstreaming National REDD Plus Strategy with Nepal's overall development strategy.
- Multi-stakeholder involvement
- Co-benefits for Nepal's poverty reduction strategy
- **Adaptation to climate change**
- Capture and fully value the wide range of ecosystem benefits from forests.
- Seeking and coordinating international funding

# National Readiness Management institutional structure





# Consultation and Outreach

**REDD-Outreach Plan Preparation**  
**National Level Consultation**  
**WORKSHOP**

23rd December, 2009  
Himalaya Hotel, Kupondol, Lalitpur

Organized By:

Supported By:

ACOFUN DANAR FECOFUN Forest Action HIMAWANTI NEFIN NEA

Government of Nepal  
Ministry of Forest Soil Conservation  
REDD Forestry and Climate Change Unit



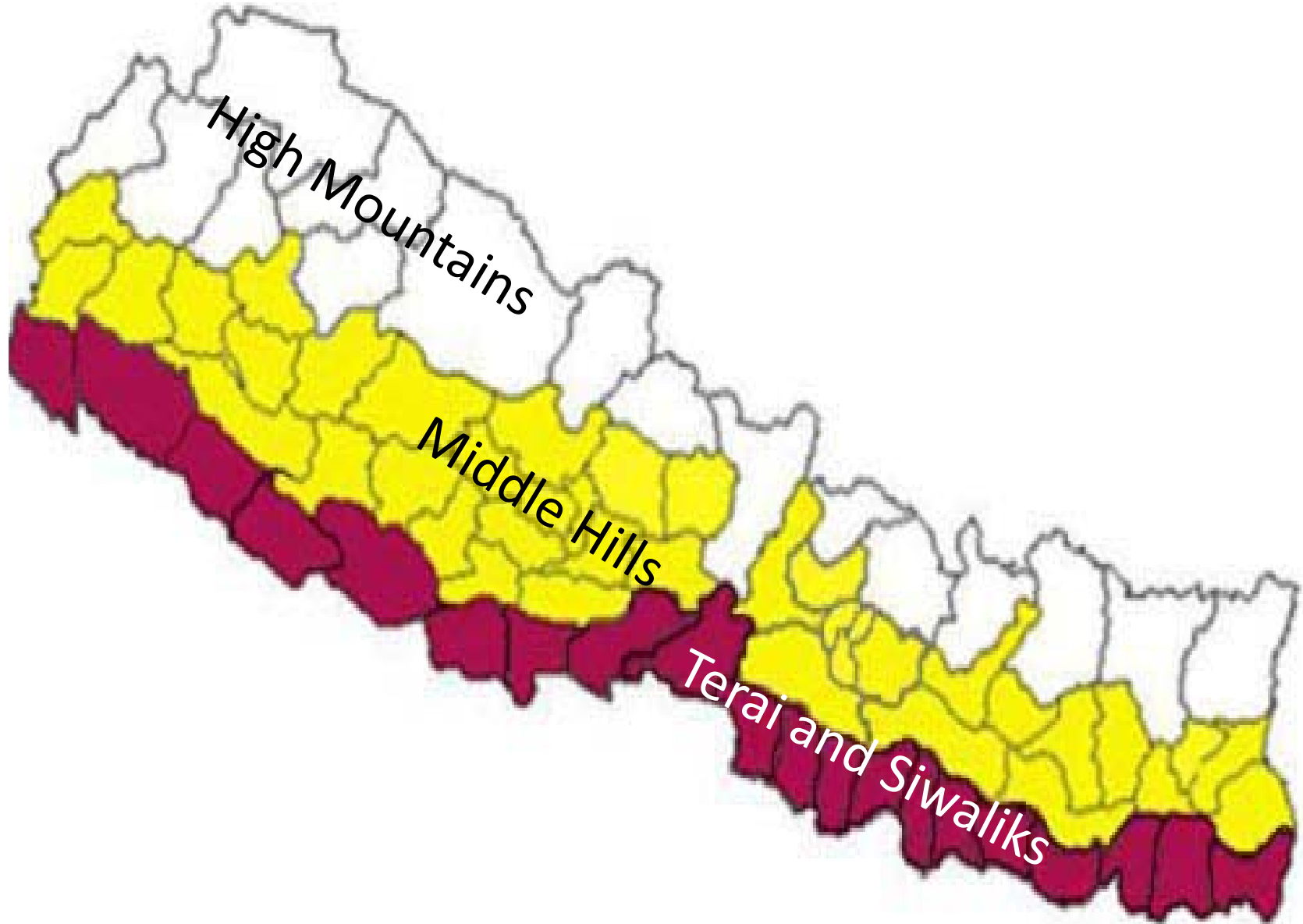








**Figure 2a.1: Physiographic Regions of Nepal**

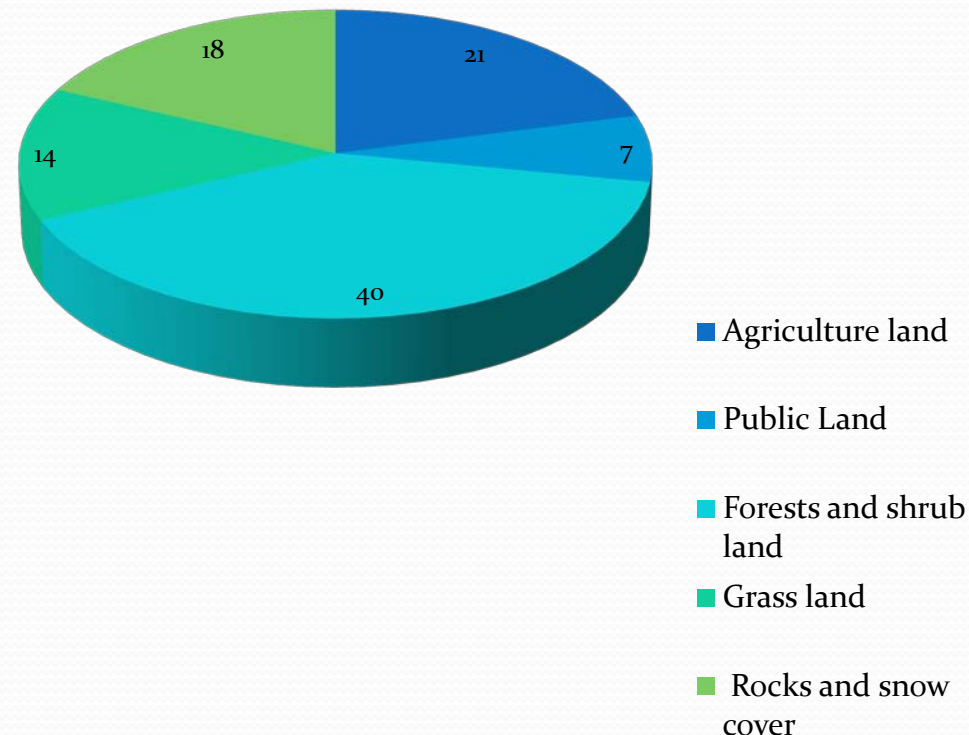




# Land Use Change

- Nepal has broadly three ecological region- Terai, Hills and Mountain.
- Data on DD are scanty and contradicting.
- Community based resource management approaches are successful

Fig 1: Land Use Type and Coverage in Percentage  
(National Forest Inventory 1999)



# Prioritized Drivers of DD

1. High dependency on forests and forest products (timber, firewood, and other NTFPs)
2. Illegal harvest of forest products
3. Unsustainable harvesting practices
4. Forest fire
5. Encroachment
6. Overgrazing
7. Infrastructure development
8. Resettlement
9. Expansion of invasive species



# Further Studies Requirements

- Detailed Assessment of Forest Policy and Law Enforcement in Nepal
- Marketing Study of Timber and other Forest Products
- A Detailed Assessment for Land Use, Tenure and Conflicts
- Assessment of contributions of forestry sector in the national GDPs of Nepal.
- Development of a Guideline for Invasive Species Management

# Strategic Options

- Underlying causes of DD and strategic options were developed. [Strategic Options revised on 28\\_03\\_010.doc](#)
- Further analysis steps include:
  - Conduct analytical studies
  - Consultation for options prioritizations
    - (Social, Economic, Environmental, Governance and Technical)
  - Economic and financial assessment
  - Preparation and consolidation of the REDD Strategy



# Implementation Approach

- Establish link between carbon ownership and land tenure
- Utilize existing institutions
- Build on successful benefit sharing
- Utilize multi-stakeholders mechanism
- Fund Transaction - Trust Fund Model.
- Clearing house
- Learning from ongoing pilots
- Higher benefits to locals

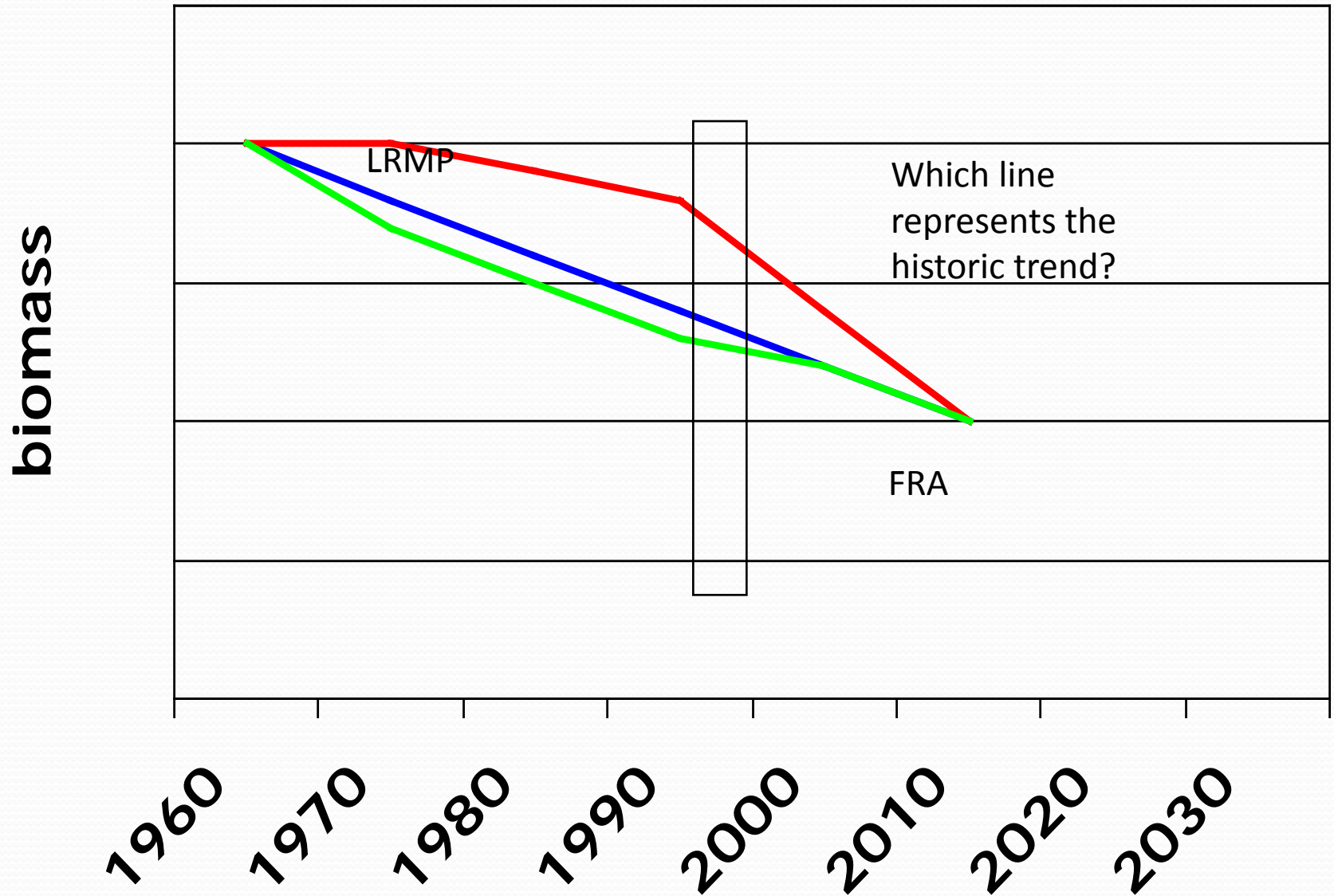
# Social and Environmental Impacts

ToR with six major activities

- Stakeholder Analysis
- Initial social and environmental situation
- Analysis of possible impacts of 'no REDD process'
- Analysis of the possible impacts of "REDD Process"
- Analysis of recommended alternative impacts
- Verification of compliance with WB policies



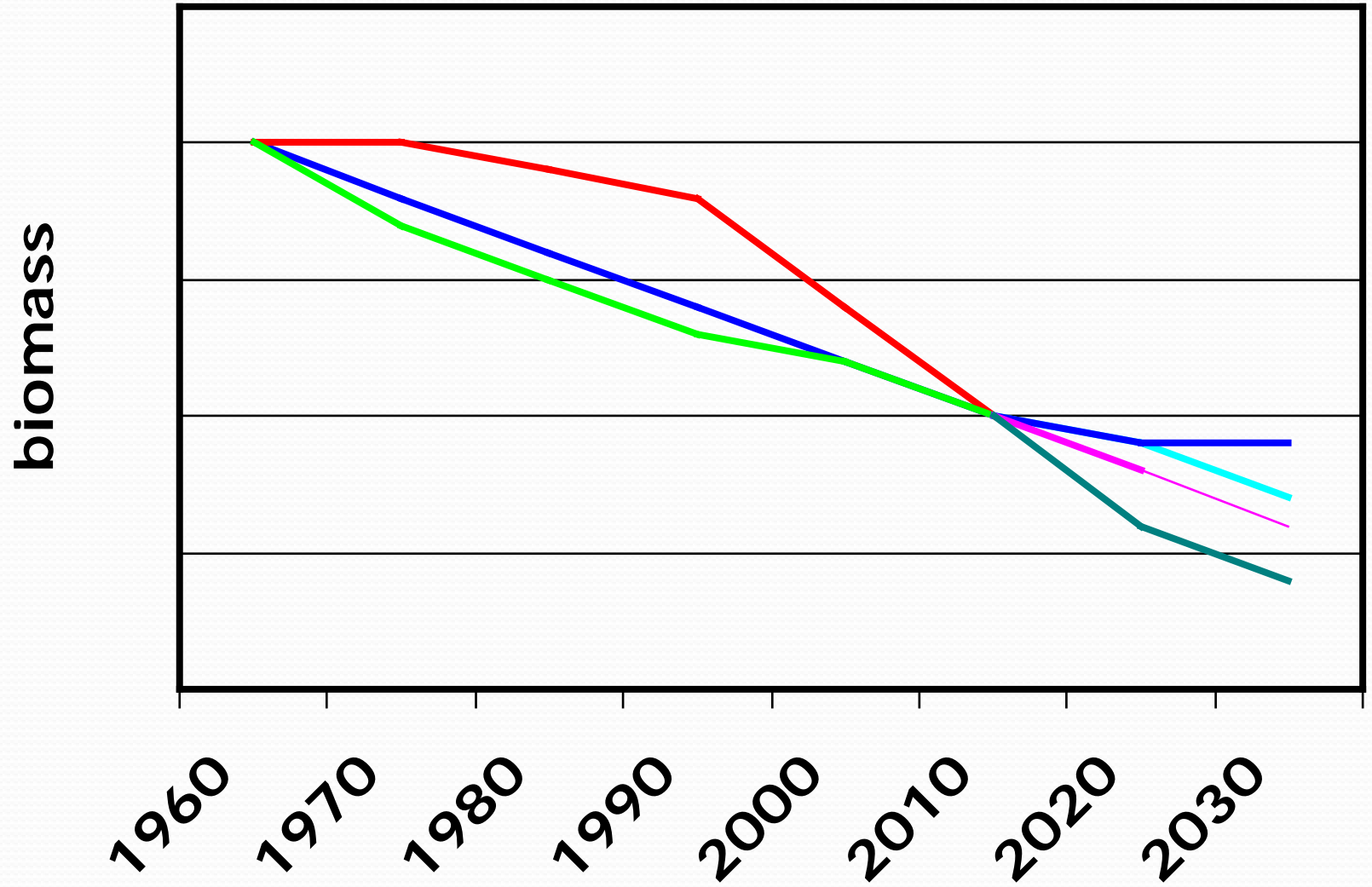
# Historic data



# Reference scenario

- Three steps
- Creation of biomass surface map
- Creation of current biomass surface
- Development of multi-year historic reference scenario
- Country wide spatial regression model imbedded in a CGE (Computable General Equilibrium) model

# Future projections

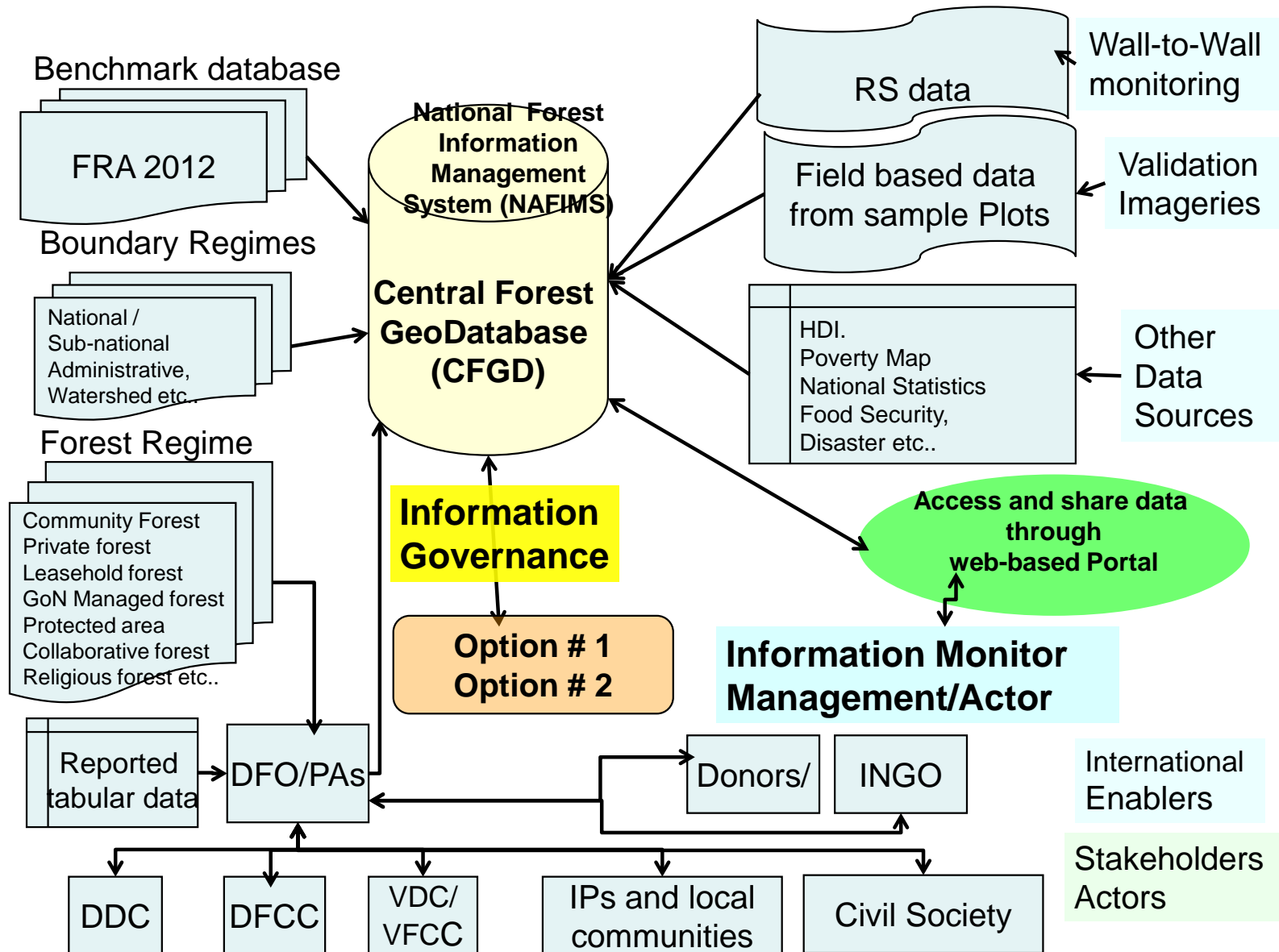




# Monitoring system

- Will be build on planned FRA activities
- Combination of RS and ground data collection
- 1,700 permanent sample plots established by FRA
- Linked to community monitoring system

# Proposed monitoring, data management and reporting system



## 5. Budget and Schedule

Total costs	7,654.5
Government	335.0
FCPF	3,595.4
DFID/SDC through funds already committed for Nepal National Forest Programme	1,447.5
Government of Finland through funds already committed to FRA project	780.0
JICA (TBC)	360.0
USAID (TBC)	1,136.6



## 5. Budget and Schedule

Budget categories	%
Consultation, outreach	23.3
Capacity building	16.3
Studies	6.4
Developing reference scenario	17.2
Design monitoring system	24.0
M&E framework	3.1

# Addressing TAP Comments

Received on 11 June, 2010

- Clarifications- minimum work requirement
- [R-PP Nepal revised June 25, 2010\(1\).doc](#)
- Require additional work/discussions
- Difficulties in addressing

# 1.1 Clarification/Suggestions

- Relation between REDD Forum and REDD-Cell,
- Role of National Planning Commission,
- Indigenous population,
- Consultations across the different regions ( in 1b),



# 1.1 Clarification/suggestions

- Methodologies to Set up 1,700 sample plots,
- Distance users,
- Necessity of five proposals under 2a,
- Closer ties to other proposed and ongoing project (e.g. NORAD), Models used by ICIMOD and WWF,

# Addressed/incorporated

- In the Absence of Democratically Elected Bodies ... consider for Pilot Implementation Mechanisms,
- How message could be extended to 16,000 CFUGs,
- DD Study in Churia and High Mountain
- ToR has been Developed to Commission Study on Coordination among various stakeholder
- M&E framework developed (component 6)

# Addressed/incorporated

- Seek More Historical data.....ToR has been Developed,
- What could be Done in the Terai Arc in Curbing Cross-border Illegal Activities,
- Use of web-based decision support tools for Strategy Options,
- Incorporated Text under 2d.
- GIS boundary for Different Legal Forest Categories

# Require Further Work- few weeks

- Cross sectoral policy review- Agri., Energy etc
- Proposal for monitoring the drivers of DD
- Monitoring proposal for private trees/farm trees
- Cost of setting up Central Clearing House
- Costs of the country-wide spatial regression model...
- Boundary separation between different legal management regimes



# Final statement

Sufficient basis to move forward



# Thank You

