



# **Republic of Vanuatu**

## **Readiness Preparation Proposal**

FCPF Participants Committee 14  
19-21 March 2013  
Washington Plaza Hotel, Washington D.C.

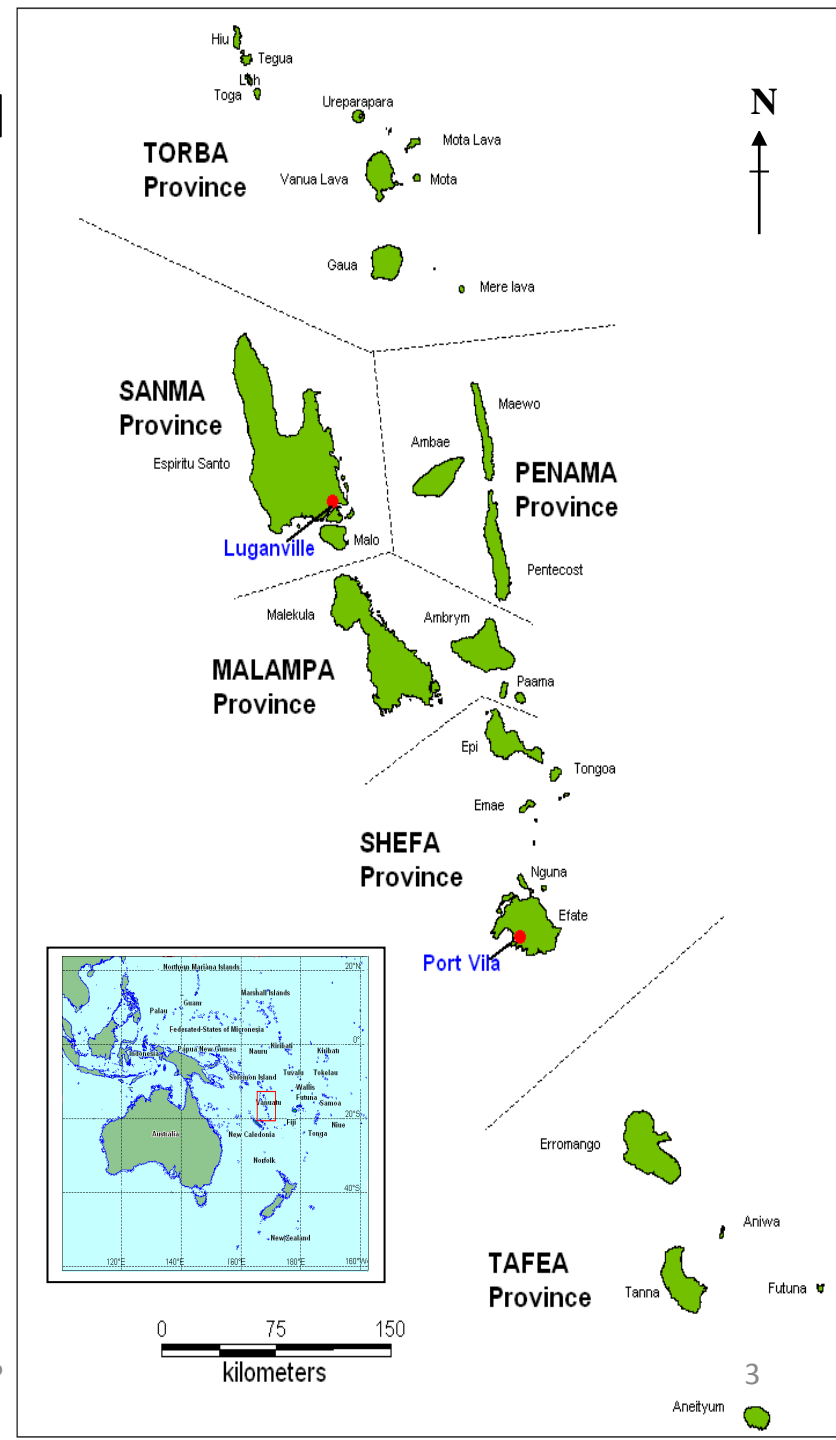


- 1. Background**
- 2. Challenges**
- 3. National Arrangements**
- 4. Drivers of deforestation and forest degradation**
- 5. The Vanuatu REDD+ Scheme**
- 6. Consultation and Participation**
- 7. MRV**
- 8. Work Plan and Budget**



## Background

- 83 islands
- 250,000 inhabitants (“Ni-Vanuatu”), 120 languages
- 900,000 ha forest land (74 %)
- traditional land tenure: nearly all forests are utilized
- 98 % customary landownership





# Challenges

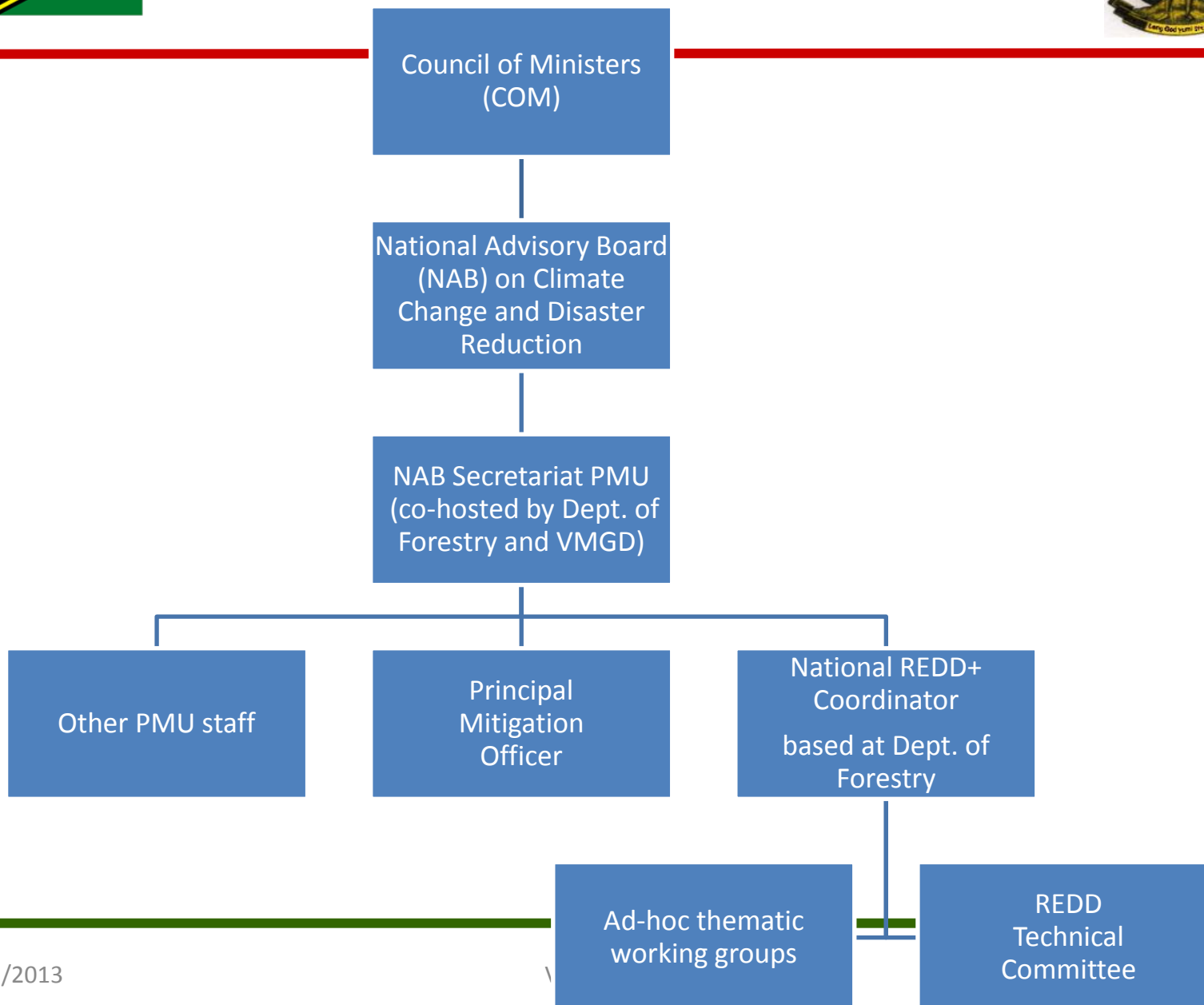


- Few inhabitants = very low capacities;
- Infrastructure underdeveloped and vulnerable;
- Registration of landownership tends to bring conflict;
- Low willingness for domestic investments;
- Lack of regulation for foreign investments;
- Access to FCPF grant;
- **Enable Ni-Vanuatu to benefit from REDD+**





# National Arrangements



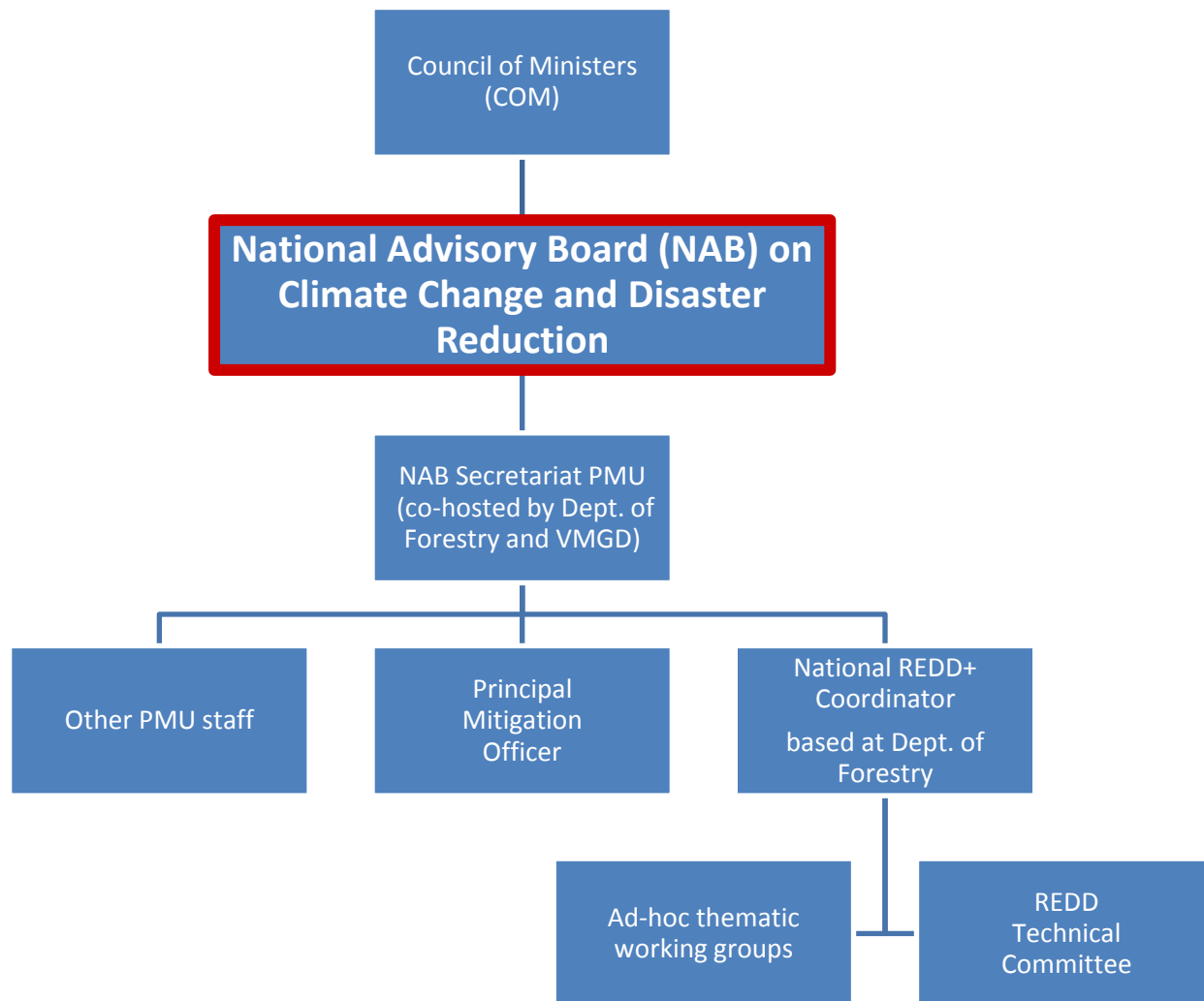


# National Arrangements



## NAB

Governing body for  
national climate  
change activities;  
Directly advises the  
Council of Ministers



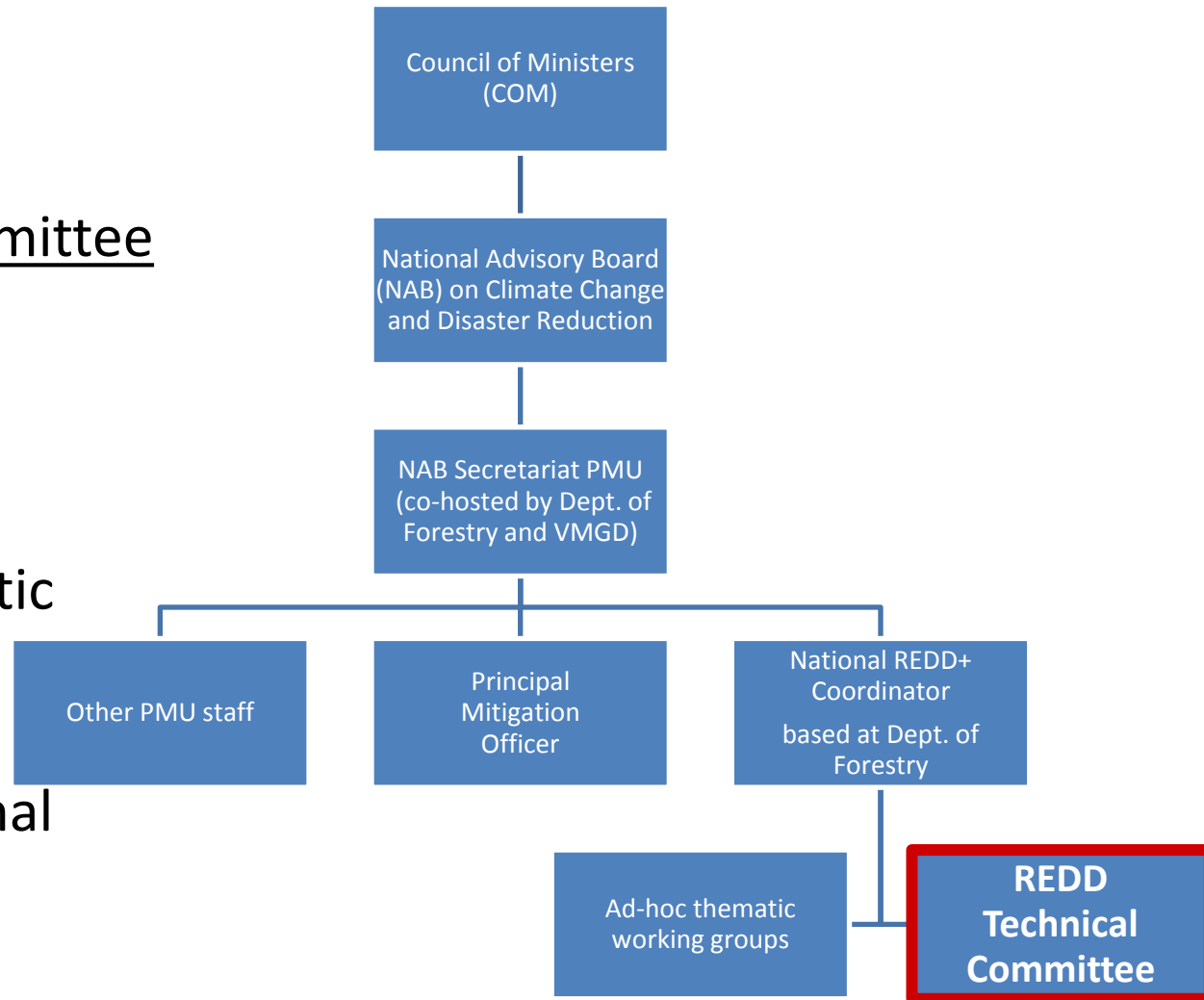


# National Arrangements



## REDD+ Technical Committee

Steering REDD+  
implementation;  
Create Ad-hoc thematic  
working groups;  
Advise NAB via national  
coordinator;





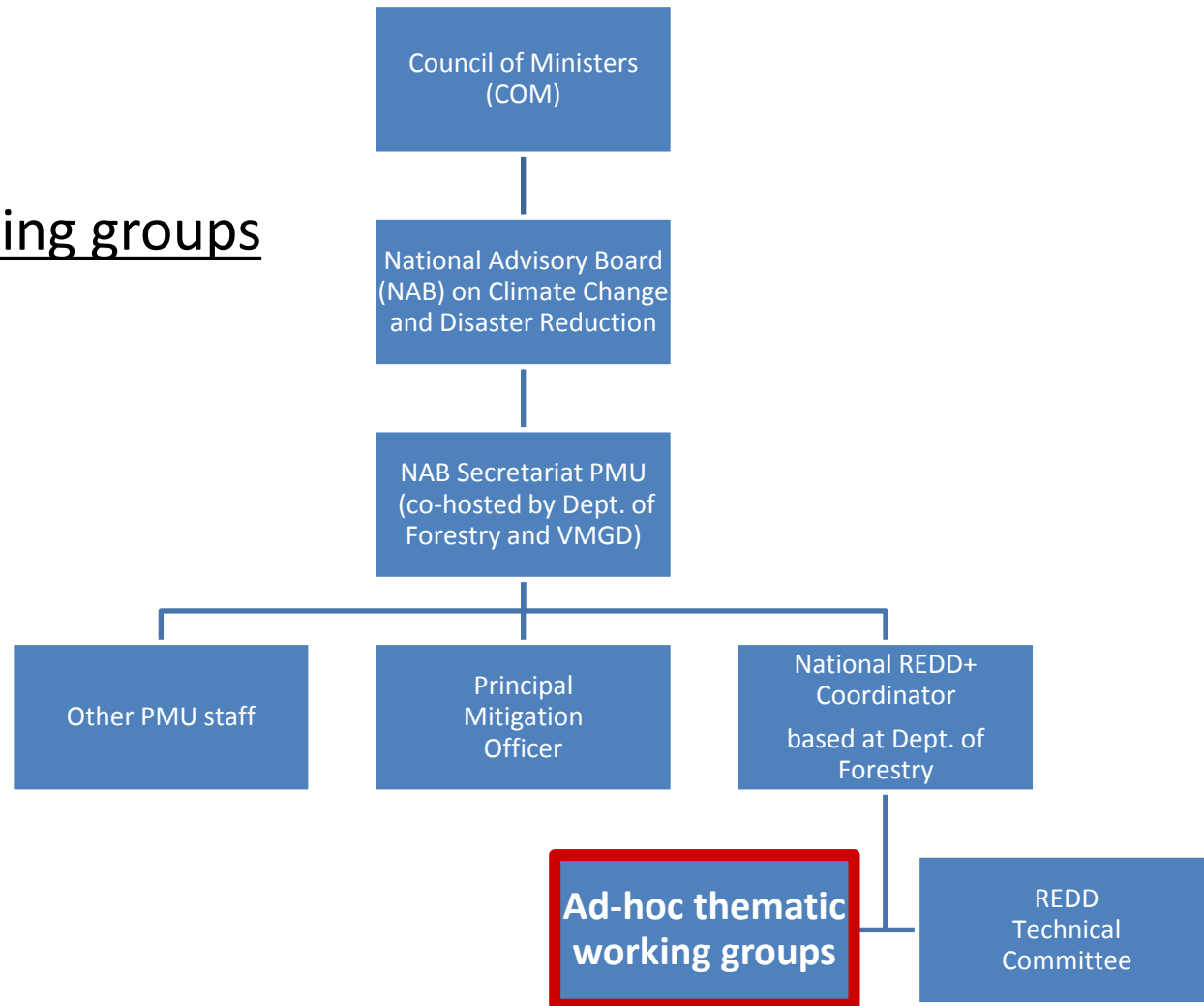
# National Arrangements



## Ad-hoc thematic working groups

Created temporarily  
to attend to technical  
issues;

Work defined by ToR,  
developed by TC;





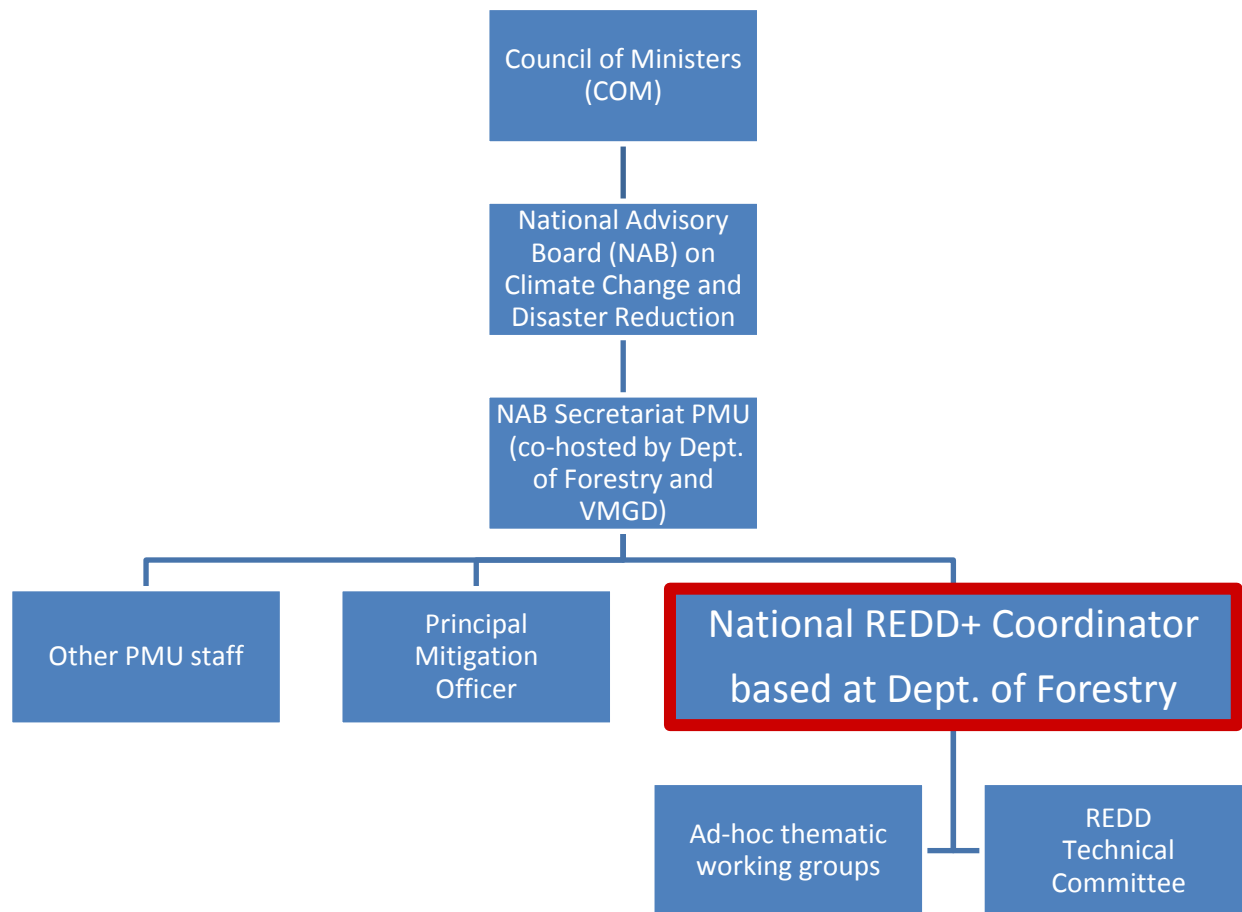


# National Arrangements



## National Coordinator

Coordination and oversight of national REDD+ activities;  
Co-Chair for TC;  
Contact for REDD+ extensionists;





# Drivers of deforestation and forest degradation



- Cattle farming
- Commercial logging
- Coconut plantations
  - Slash'n'burn
  - shifting cultivation
  - population growth
    - tourism
    - urban development & real estate
    - commercial agriculture

1960

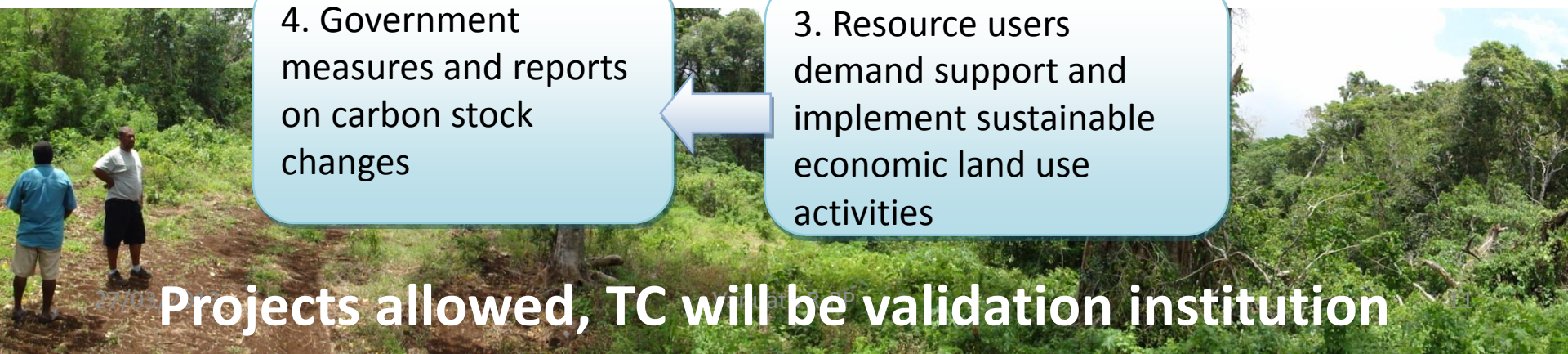
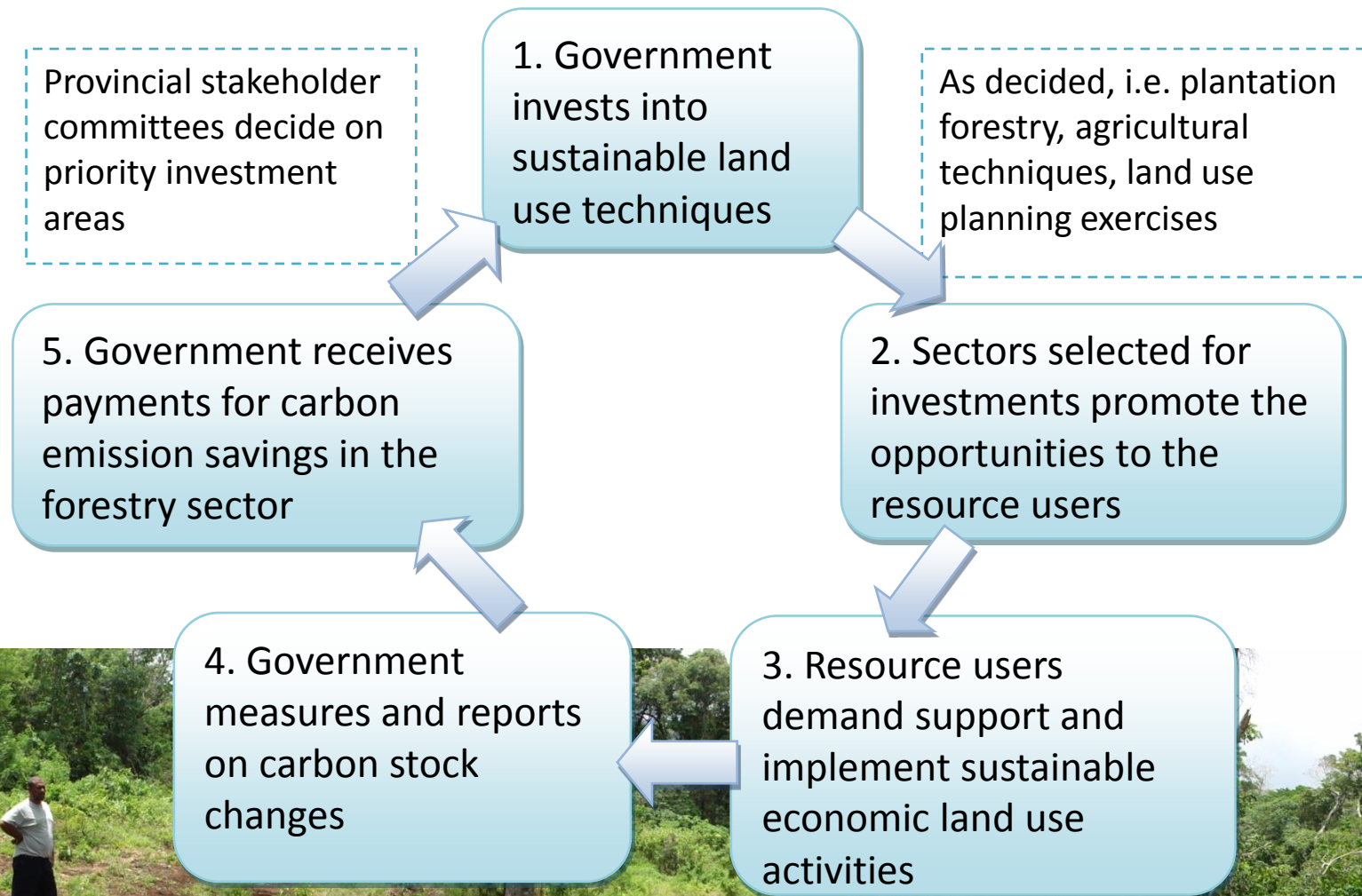
1980

2000

today

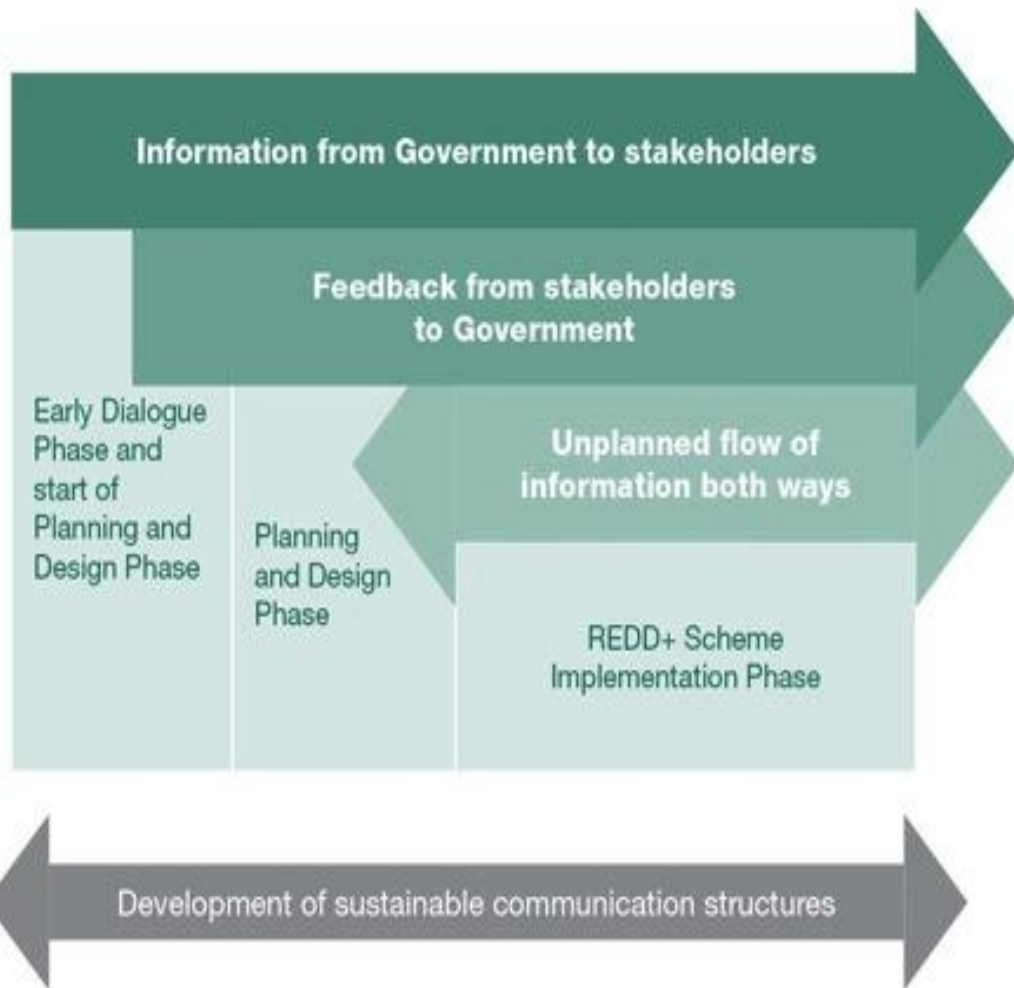


# The Vanuatu REDD+ Scheme





# Consultation and Participation



Self organization:

- National Extension & Outreach coordination
- Field staff in each Province acts as implementing arm
- Potential field staff is already in place
- Significant funding needed



## MRV / REL



- Forest inventory planned for 5 islands (efficiency);
- Methodology based on FAO manual, simplified and adapted to Pacific Islands by SPC (Secretariat of the Pacific Community);
- Communities are integrated in the work;
- MRV currently being tested on Santo Island, REL to be developed by October 2013;
- Staff being trained on the job for different tasks (RS, carbon assessment, NFI design)



## Work Plan and Budget



### **Priorities to be funded by FCPF (3,585,000 USD):**

- Outreach and consultation;
- Capacity supplementation: external support for the national REDD+ team;
- National governance;

### **Other priorities, funding not yet secured (3,726,070 USD):**

- Implementation MRV and REL;
- Demonstration activities



## TAP comments



- Editing: section headings etc. have been corrected
- Budget section has been reviewed, FCPF budget allocation has been indicated
- Demonstration activities are the weakness of the document. There are few initiatives so far, donors are welcome to help changing that 😊
- A section on monitoring of biodiversity benefits has been added: planning as part of implementation





Thankio tumas

