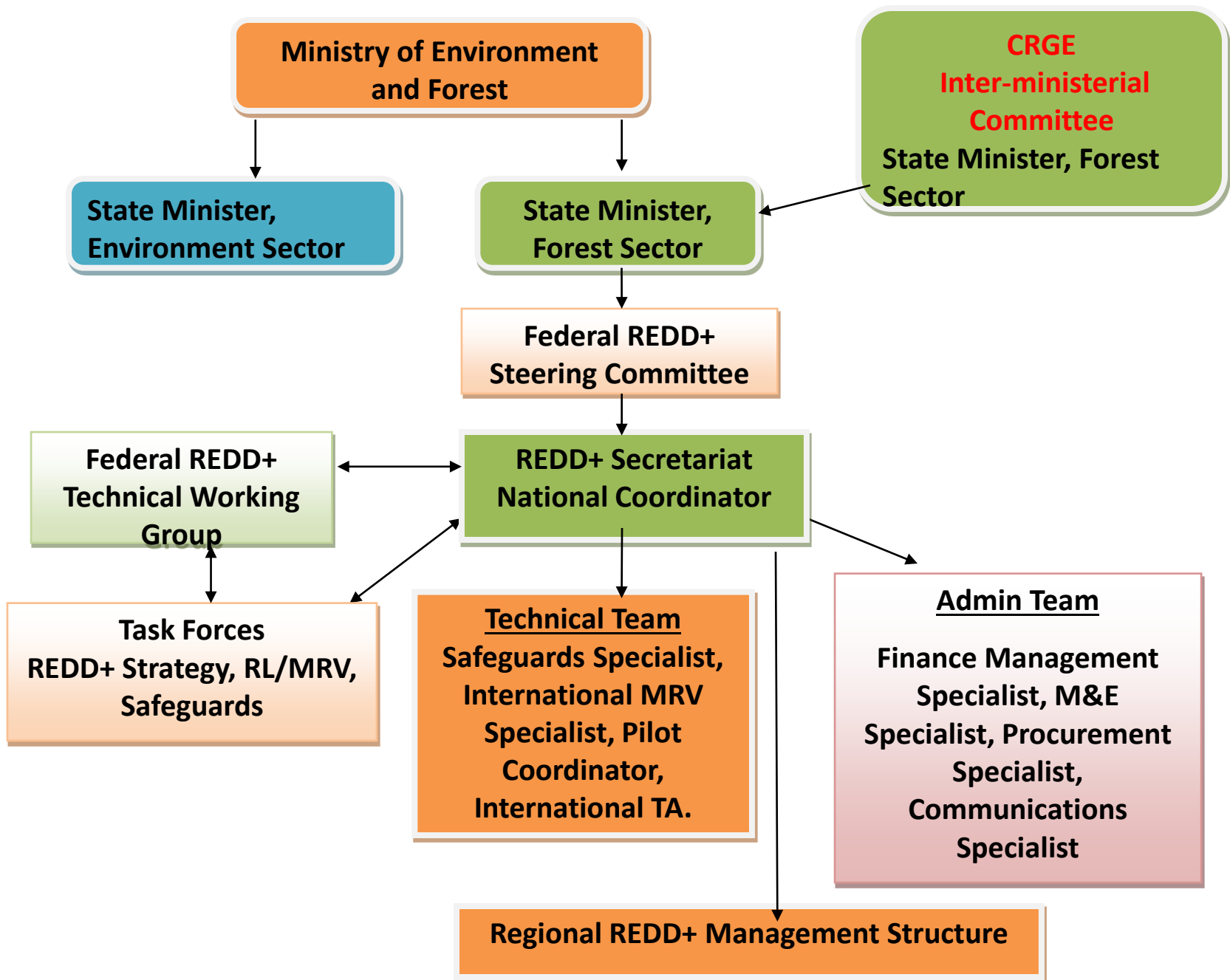


# **The Regional REDD+ Management Arrangement**

**Temesgen Yohanes**

**SESA Task force Member**



# Regional REDD+ Management Structure

- **REDD+ Steering Committee**
- **Roles and Responsibilities of Regional Steering Committee**
- → Reviewing & approving annual programs, w/plans & budget
- → monitoring and evaluating project progress)
- → Provide guidance & advice on regional REDD+ implementation

# Regional REDD+ Management Structure

## Regional REDD+ Steering Committee members

- NGOs
- Regional Tourism and Culture Bureau
- Agriculture Bureau
- Investment Bureau
- Law enforcement organization
- Bureau of Mine and Energy
- Regional EPA (MoEF)
- Bureau of Women affairs,
- Hawassa University
- Bureau of Trade and Industry
- Office of Regional Head Of State

# Regional REDD+ Management Structure

- **Regional REDD+ Technical Working Group**
- → Bureau of Environmental Protection, Land Administration and Use
- → Regional research institutions
- → Bureau of Agriculture
- → SNNPR Region Agriculture Research Institute
- → Bureau Of Finance and Economic Development
- → Hawassa University (Wondo Genet College of Forestry & Natural Resources)
- → Regional Forum for Environment
- → Bureau of Mine and Energy
- → Bureau of Water Resource Development
- → Investment Bureau
- → NGO working on Natural Resources

# Regional REDD+ Management Structure

## Functions of the RRTWG include:

- Identifications of problems related to REDD
- Prepare plans based on agro-ecology
- Awareness creation
- Conduct monitoring and evaluation
- Adapt new working procedures and best practices
- Consult the steering committee
- Formulate projects
- Prepare and submit report
- Work in collaboration with federal REDD Technical Committee