

FCPF Technical Advisory Panel

El Salvador RPP- Revised Version: TAP Comments & Recommendations

October, 2012

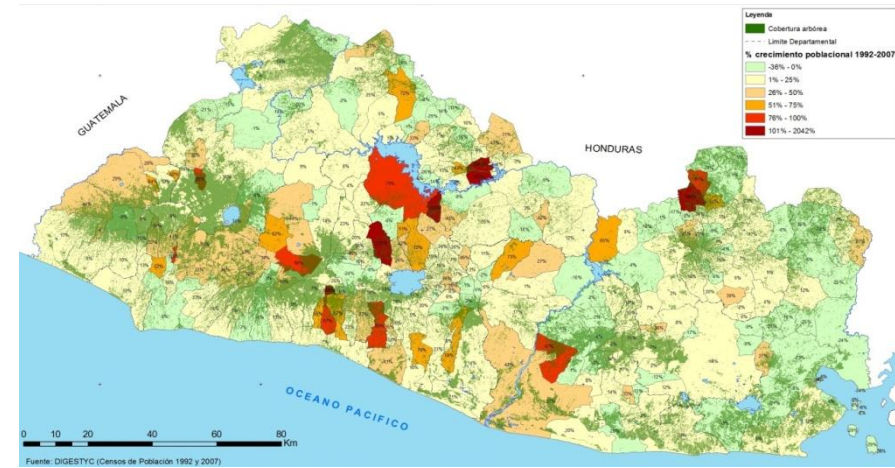
FCPF Participants Committee
13th meeting, Brazzaville,
Congo

For the El Salvador TAP team
Tomás Schlichter and Gisela Ulloa



El Salvador is an agrarian society

- Population: 6.1 million
- Rural population: 45%
- Forests cover 15.3 % of national territory (1998)
- Deforestation: 48,280 ha (15%) between 1998-2008



Strengths of the RPP

- The Salvador RPP included an integral approach “Adaptation based Mitigation” which try to represent the high vulnerability of the country to extreme events
- R-PP proposal includes a thorough analysis on biodiversity as part of the additional benefits Impact
- New version includes also the monitoring of other socioeconomic benefits
- 75% of the components are Met

Standard	Draft R-PP April 23, 2012	Revised R-PP May 31st, 2012	Revised R-PP August 25th, 2012	Revised R-PP September 28 th 2012
1a. National Readiness Management Arrangements	Partially Met	Partially Met	Largely Met	Met
1b. Information Sharing and Stakeholder Dialogue	Partially Met	Partially Met	Largely Met	Met
1c. Consultation and Participation Process	Partially Met	Partially Met	Partially Met	Largely Met
2a. Land Use, Forest Law, Policy and Governance	Partially Met	Met	Met	Met
2b. REDD+ Strategy Options	Partially Met	Partially Met	Largely Met	Largely Met
2c. Implementation Framework	Partially Met	Partially Met	Largely Met	Largely Met
2d. Social & Environmental Impacts during Preparation and Implementation	Partially Met	Largely Met	Met	Met
3. Reference Level	Partially Met	Largely Met	Met	Met
4a. Monitoring – Emissions and Removals	Not Met	Met	Met	Met
4b. Other Multiple Benefits, Impacts and Governance	Partially Met	Partially Met	Largely Met	Met
5. Schedule and Budget	Partially Met	Largely Met	Met	Met
6. Program Monitoring & Evaluation Framework	Met	Met	Met	Met

Areas that need some improvement

- **1c. The Consultation Plan needs still some further work and coordination with Indigenous People and rural communities representatives.**
- **2b. For strategic options description on how to improve governance is needed, participation of key actors in the development and application of the options and take into account possible consequences on local communities and indigenous peoples that depend largely on forest resources**
- **2c. Additional description on activities, responsible entities and participants is required.**

Thanks