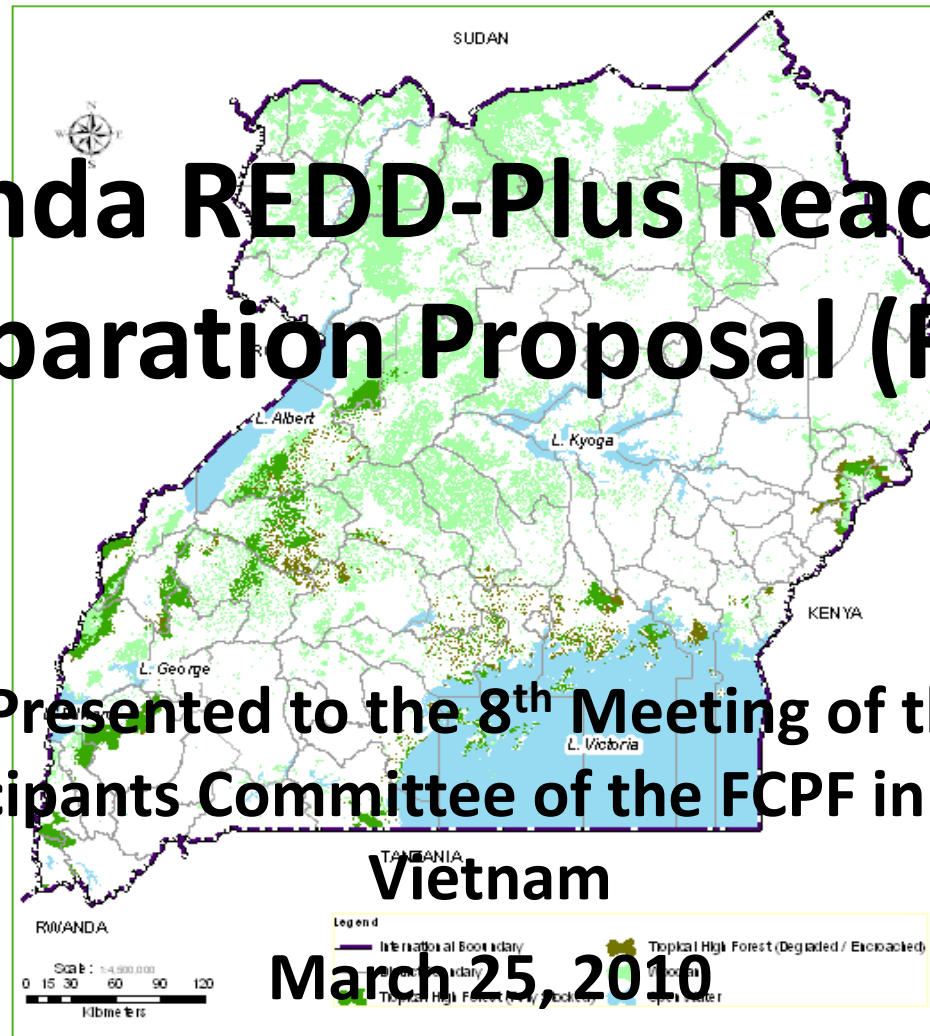




Uganda REDD-Plus Readiness Preparation Proposal (R-PP)

Presented to the 8th Meeting of the
Participants Committee of the FCPF in Da Lat,

Vietnam



March 25, 2010

By Xavier Mugumya



GENERAL INFORMATION



R-PP Secretariat

Alex B. Muhweezi	Technical Coordinator, REDD Readiness Preparation Proposal
Sheila Kiconco	Programme Officer, REDD Readiness Preparation Proposal
Xavier Mugumya	National Coordinator Climate Change/REDD Focal Point (NFA)

REDD-Plus Working Group (30-60 members)

Sara Namirembe (PhD)	Katoomba Group
Robert Charles Aguma	ASRDEM Ltd
Timm Tennigkeit (PhD)	UNIQUE East Africa Ltd
Sean White	Independent Forestry Consultant

REDD -Plus Steering Committee (25-30 members)

IUCN, Environmental Alert, Care Uganda, Water Governance Institute, Eco-Trust, Tree Talk, ACODE, Tobari/IPACC, NAPE, BUCODO and Uganda Media Trust

Financing: R-PP formulation Grant from FCPF US\$ 200,000; Royal Norwegian Embassy in Uganda US\$ 183,500; GoU and other civil Society Organizations: in Kind



1a. National Readiness (Continued): Stakeholders and their roles in R-PP formulation and implementation 2

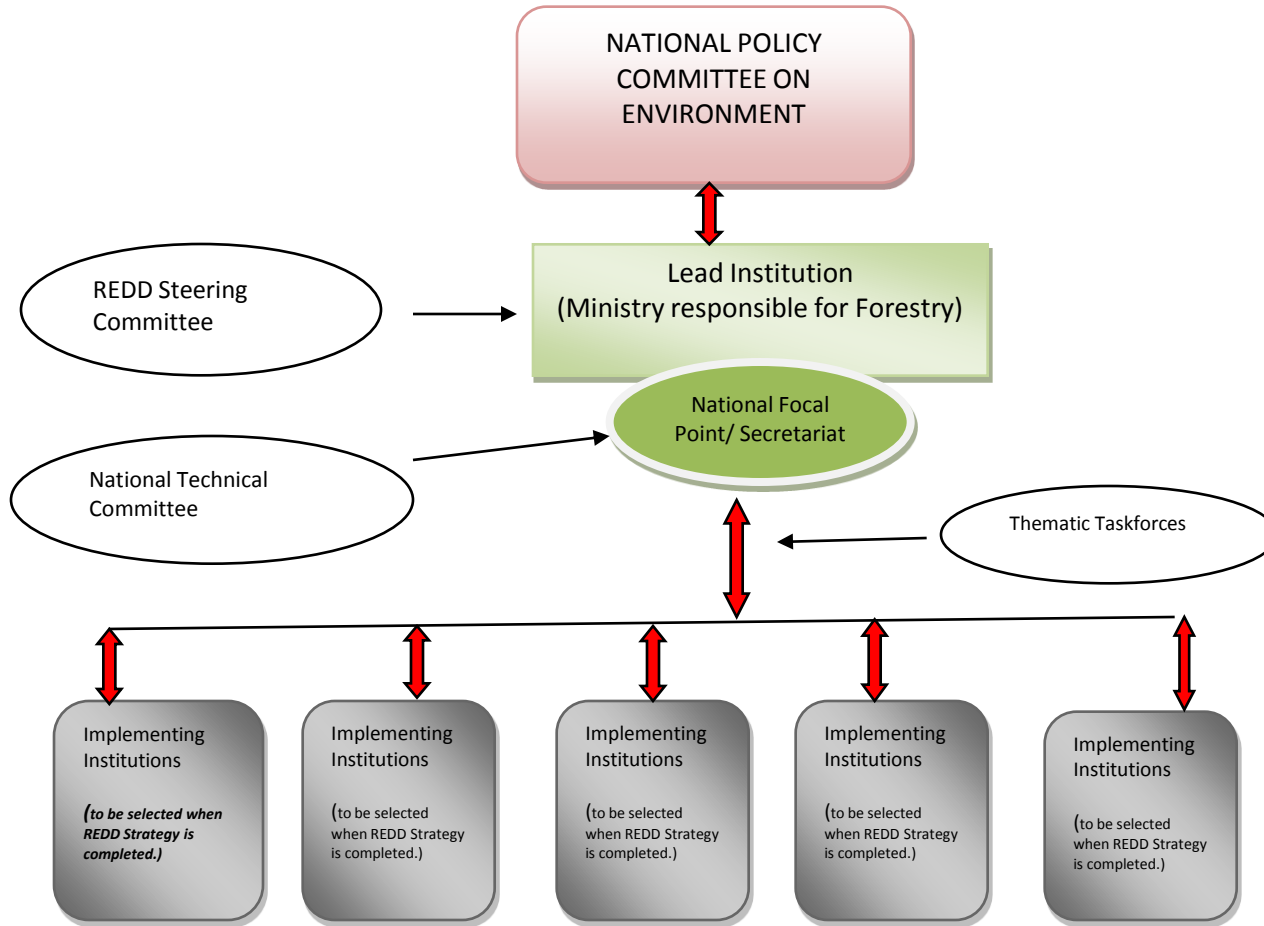


INSTITUTION	SUMMARY OF THE MANDATE/ROLES
Stakeholders	Participating in implementation processes
The National Policy Committee on Environment (Legal organ established in 1995 under the Environment Act of Uganda (Cap 153))	Help to harmonize policies; provide functional linkage with the executive and cause smooth integration of REDD-plus in Development plan
Ministry of Water and Environment	Supervision, co-ordination and reporting
Forestry Sector Support Department (FSSD) serving as National REDD-Plus Focal Point	Implements mandate of the Lead Ministry; hosts the focal point for REDD
National Technical Committee	Replaces the current REDD-plus Working Group
Implementing institutions	Participate on Committee but also implement as assigned
Task Forces (five theme based task forces)	Provide in-house expertise
Coordination and supervisions responsibility of the Lead Ministry	Executive functions (MoWE); within the framework of multi-sector approach
Policy level Coordination and supervision by REDD-Plus Steering Committee	<ul style="list-style-type: none"> Will be done by the National Level Steering committee
REDD-Plus Steering Committee	Provide strategic direction



Uganda R-PP

Implementation Coordination and Supervision Structure





1 b. Stakeholder Consultation and Participation during R-PP formulation:



ASPECT OF CONSULTATION	REMARKS
REDD Working Group	Met more than 12 times from March 2010 to Feb 2011
REDD-Plus Steering Committee	REDD-Plus Steering Committee met at least 3 times
Stakeholder consultations (Nearly 2,500 people representing 7 different categories of stakeholders were directly consulted)	Region and Area of Focus
	<ul style="list-style-type: none"> a) National b) Regional (Eastern, Northern , Western, Central) c) Special Groups (Charcoal, firewood, pole, dealers, etc) d) Forest Dependent People in 3 different areas e) Community level Stakeholders (South-western, Central, Eastern, Northern, North-west)
	•National (Policy, Development Partners)
	Media and Publicity
National Stakeholders meeting	1 meeting to validate the draft R-PP (when?)



2a. Assessment of land use, forest policy and governance

2b. REDD Strategy Options

2a. Assessment

- *Study findings and consultation outputs were combined to identify drivers of DD*
 1. Agricultural expansion into forested land
 2. Population growth
 3. Unsustainable cutting of trees for charcoal
 4. Unsustainable cutting of trees for firewood
 5. Unsustainable harvesting of timber
 6. Livestock grazing and bush burning

2b. REDD Strategy Options

- *Options are geared at addressing both the policy failures as well as promoting good practice*



2c. REDD IMPLEMENTATION FRAMEWORK

2d. SOCIAL AND ENVIRONMENTAL IMPACTS

2c. REDD Implementation Framework

- *The ToRs were prepared*

2d. SOCIAL AND ENVIRONMENTAL IMPACTS

- *SESA/ESMF ToR prepared*



COMPONENT 3: DEVELOP A REFERENCE SCENARIO

COMPONENT 4: DESIGNING A MONITORING SYSTEM

Component 3: Reference scenarios

- Data Source: **National Biomass Study** (NFA, 2009)
- Historical emissions: we shall use the IPCC Guidance
- Consideration of influence of identified drivers

Component 4: MRV

- Scope of MRV: Cover the whole country and with a potential for sub-national level early MRV to contribute to the national one;
- Steps: Tier 2 data on national level and then use Tier 3 data for hot spots for the monitoring of emissions or emission reductions from forests



COMPONENT 3: DEVELOP A REFERENCE SCENARIO

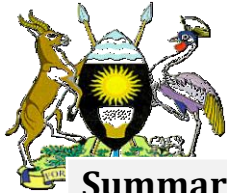
COMPONENT 4: DESIGNING A MONITORING SYSTEM

Component 3: Reference scenarios

- Data Source: **National Biomass Study** (NFA, 2009)
- Historical emissions: we shall use the IPCC Guidance
- Consideration of influence of identified drivers

Component 4: MRV

- Scope of MRV: Cover the whole country and with a potential for sub-national level early MRV to contribute to the national one;
- Steps: Tier 2 data on national level and then use Tier 3 data for hot spots for the monitoring of emissions or emission reductions from forests



COMPONENT 6: SCHEDULE AND BUDGET

Summary of Activity Plan and Schedule for Developing REDD-plus Consultation and Out-reach Plan and Budget	\$338
Summary Activity Plan and Schedule for Developing Conflicts and Grievances Management Strategy and Budget	\$44
Summary Activity Plan and Schedule for Developing REDD-plus Awareness and Communication Strategy (RACS) and Budget	\$139
Summary of Activity Plans and Schedule for carrying out Assessment of Land Use, Forest Policy and Governance Activities and Budget	\$625
Summary Activity Plans and Schedule for Developing REDD-Plus Strategies and Budget	\$7,605
Summary Activity Plan and Schedule for developing REDD Implementation Framework and Budget	\$640
Summary Activity Plans and Schedule for Developing the ESMF and budget	\$305
Summary Activity Plan and Schedule for developing Reference Scenario and Budget	\$1,600
Summary Activity Plan and Schedule for developing MRV and Budget	\$1,230
	12,526