



FCPF Technical Advisory Panel

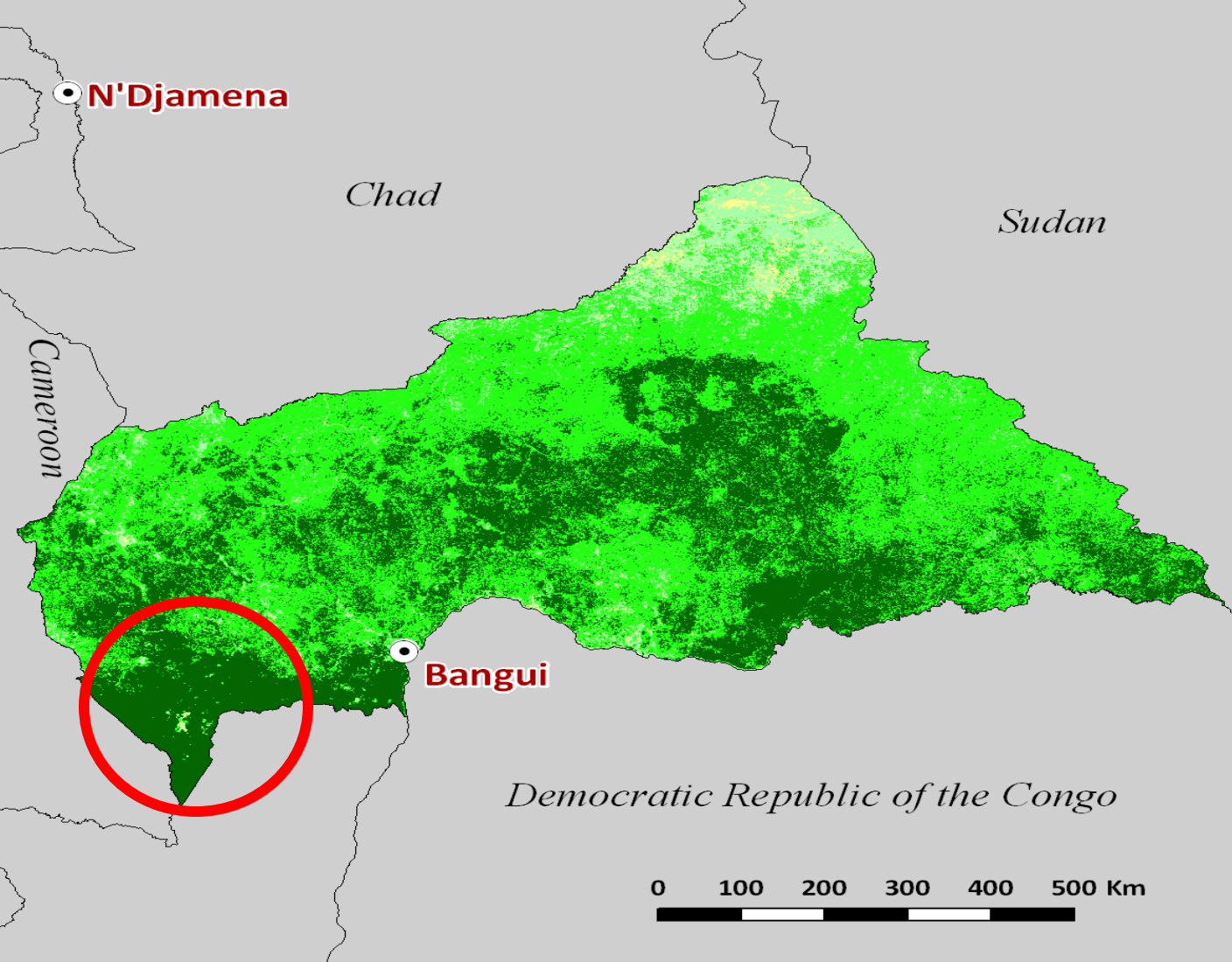
**Central African Republic
Draft RPP
TAP Comments &
Recommendations**



March 24-25, 2011

**FCPF Participants Committee
Da Lat, Vietnam**

Stephen Cobb and 6 TAP team members



Central African Republic:

- forest area between 22.1 – 30.1 million ha
- closed tropical forest about 4.6 million ha
- Net deforestation rate: 30,000 hectares per year, 0.1%₂

Strengths of the RPP

- An **evenly-balanced and thoroughly professional proposal**, whose authors, both national and international, are to be congratulated on the high standard they have achieved. It is **close to being of adequate standard**.
- If it is held back from achieving the necessary overall standard, that is largely because of the **institutional arrangements** and the **consultation process**,
- The **technical aspects** of the proposal are of a consistently high standard, with a logical link between analysis and proposed solutions.
- **Links between drivers of deforestation & strategy options** well developed (2a & 2b).
- Components 3 and 4 have been particularly well treated. CAR has a **strong background in forest measurement**, which will stand it in good stead in these domains.
- The TAP notes the fact that CAR has drawn attention to its obligations to **regional collaboration with its Congo basin neighbours** through COMIFAC.

Areas that need further work

- The TAP is not entirely convinced by the **institutional arrangements** proposed. The structures are rather heavyweight, with the links between central and provincial bodies not well described. There are concerns about how well local voices will be heard; also whether the proposals for **managing REDD funds** would create sufficient transparency. (see 1a)
- The TAP reviewers were uneasy about the **lack of consultation outside the capital** city, and about a number of consultation and participation principles in relation to Indigenous Peoples. The TAP feels that additional effort to redress this now, will avoid storing up greater problems in the future. It understands that plans are in hand to do this (and urgently need the FCPF's financial support) (see 1b)
- Not enough weight has been given to the **shortcomings of the legal arrangements**, and the steps needed to amend them, in order to clarify the rights to the future values of forests, trees and forest carbon. The **R-PP itself does not advance this vital area far enough (2a, 2c)**, although REDD legislation is under preparation.
- CAR has had strong international support in the production of this R-PP. Reviewers felt that there needs to be more strategic thought given to a realistic and properly conducted **training needs assessment and capacity-building plan (2c and throughout)**, if CAR is to position itself to do more of this kind of work on its own in future
- Work in the semi-deciduous dry woodlands that constitute 80% of the country, will be hampered by a lack of baseline data on woody biomass.
- The **maps** are of rather **poor quality**. It would be a real help if they were improved .

Major Recommendations

- **A dialogue between TAP members and the CAR team generated a number of suggestions for improvements, some of which were acted upon in a revised submission in early March. None of these changes has gone quite far enough yet to allow the status of the Standards to be altered, however.**
- **Thus, the principal recommendation remains to attend to the comments and recommendations already made, paying particular attention to the consultation process outside Bangui, the capital. This has to be part of preparation, not implementation. We understand that arrangements are in hand to do this.**
- **Broadly constructive comments have been made by civil society organisations, meeting in Bangui last week to review the R-PP, which underline the importance of this recommendation.**
- **Clearly, all those standards which are partially met still need a fair amount of work, while those which are largely met need very little additional work respectively, to enable them to meet the standards**

Overall Summary

Component	1a	<i>partially meets the standard</i>
	1b	<i>partially meets the standard</i>
	1c	<i>partially meets the standard</i>
Component	2a	<i>largely meets the standard</i>
	2b	<i>partially meets the standard</i>
	2c	<i>largely meets the standard</i>
	2d	<i>largely meets the standard</i>
Component	3	<i>largely meets the standard</i>
Component	4a	<i>largely meets the standard</i>
Component	4b	<i>meets the standard</i>
Component	5	<i>partially meets the standard</i>
Component	6	<i>largely meets the standard</i>