



# REPUBLIC OF CONGO'S ERPDP

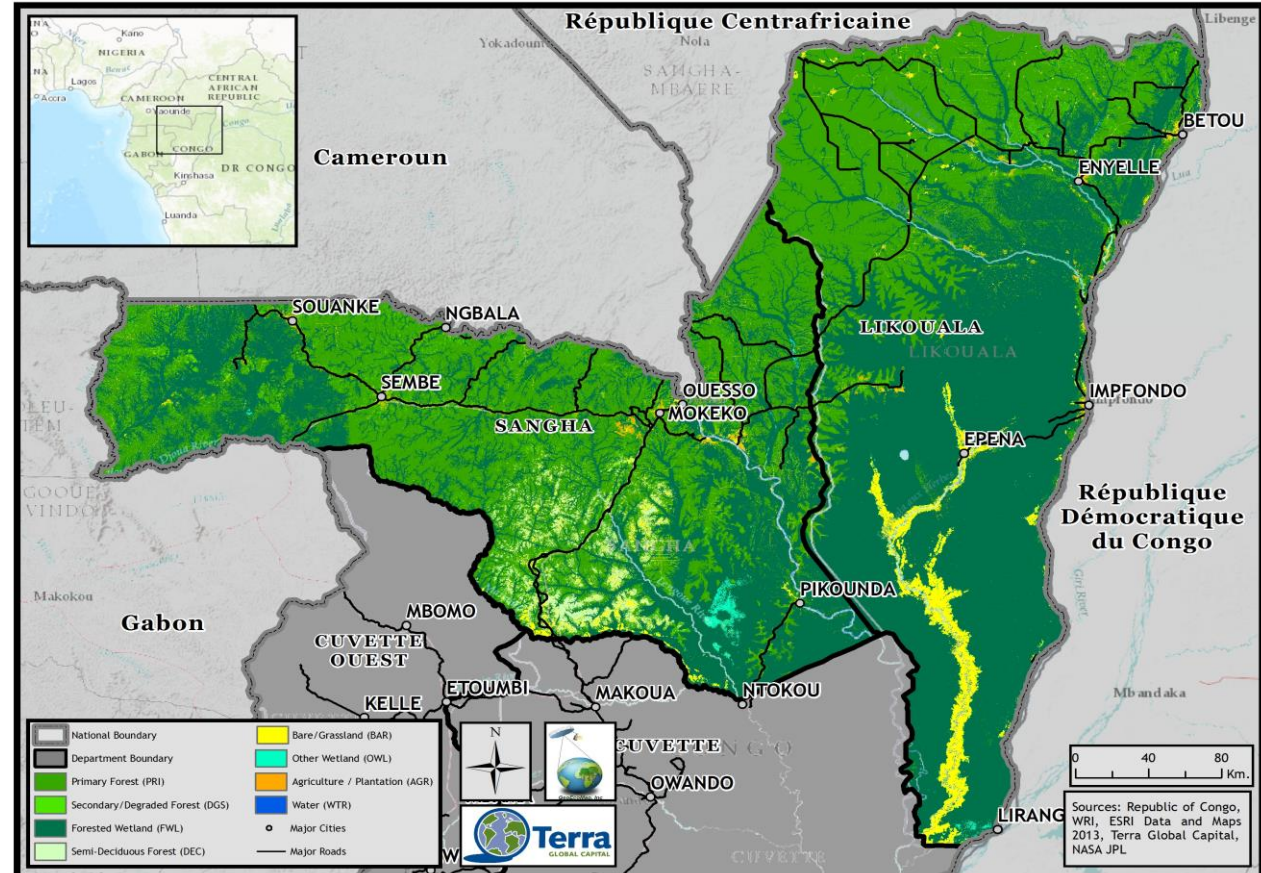


# **Table of Contents**

- 1. Jurisdiction: Map and key relevant program area features**
- 2. Key drivers and underlying causes**
- 3. Principal interventions**
- 4. Implementation Plan**
- 5. ER Program Budget and Financing**
- 6. Reference Level**
- 7. Measurements, monitoring, reporting**
- 8. Estimated emissions reductions**
- 9. Safeguards**
- 10. Benefit-sharing plan**
- 11. Stakeholder consultation and participation**

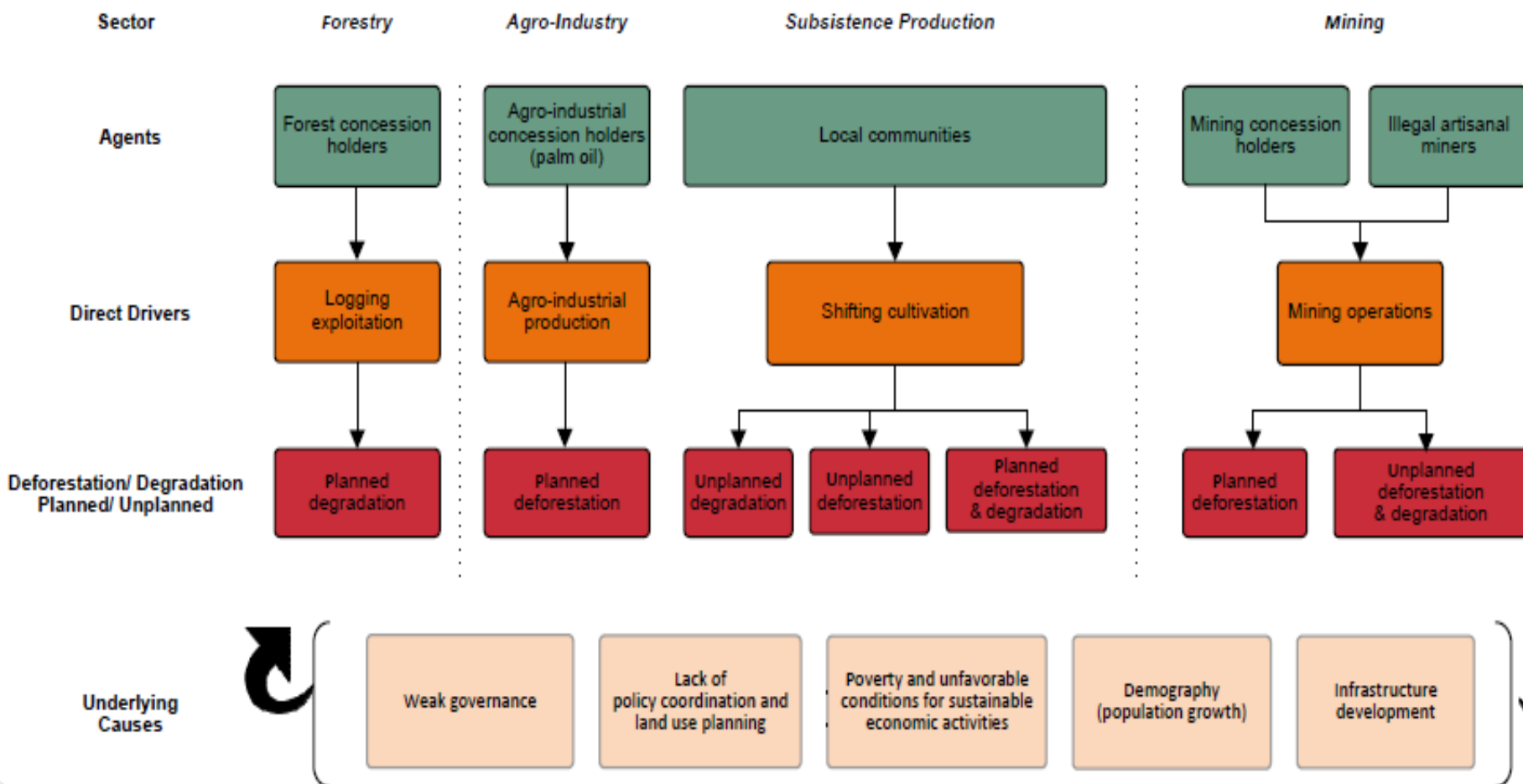
# Jurisdiction

- Departments of Sangha and Likouala: area 12.4 million ha, 97% forests
- Area selected because of growing pressure on forests
- Population (2015): 306,000



# Key drivers and underlying causes

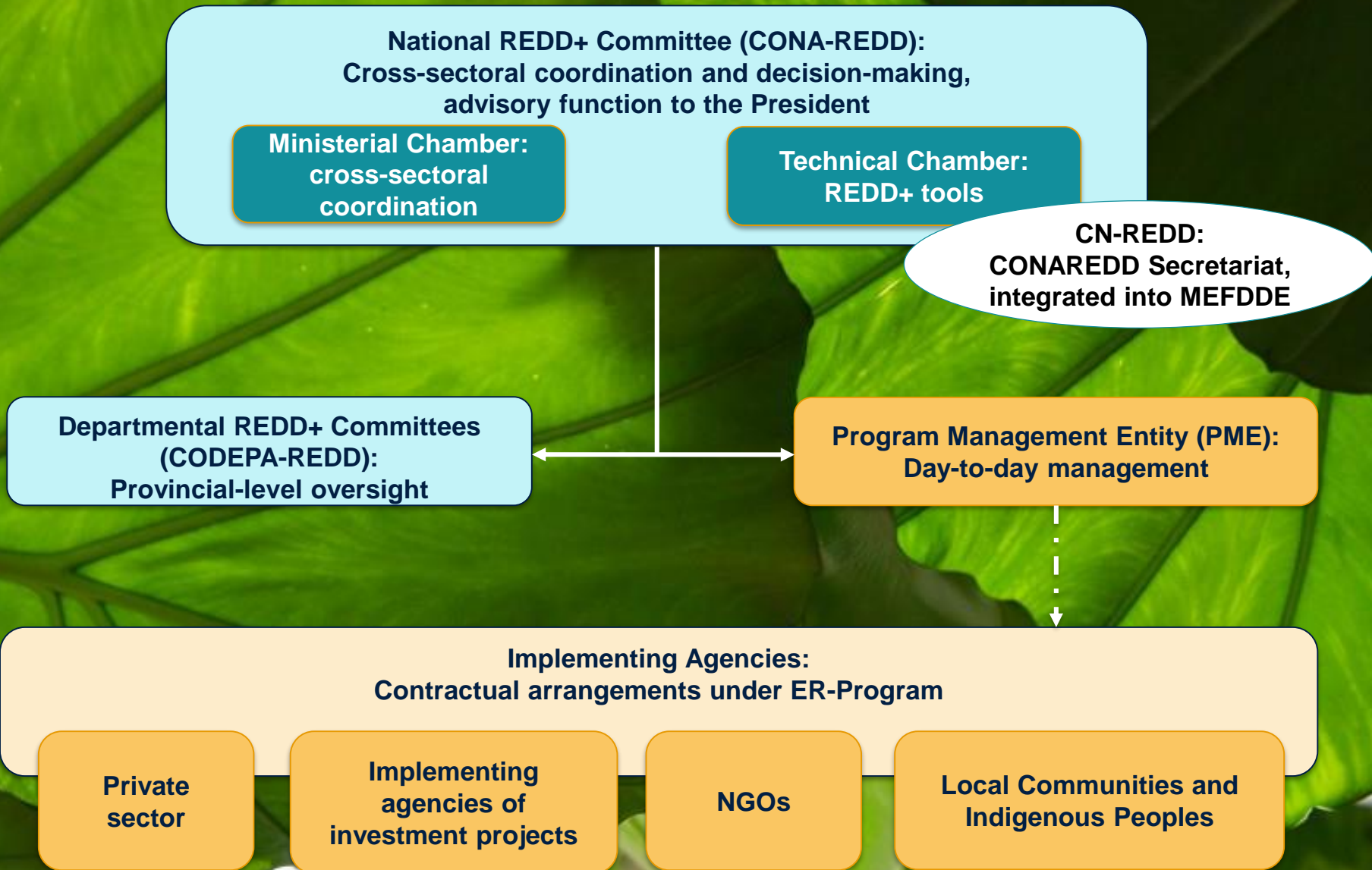
## Main Drivers, Underlying Causes, and Agents of Deforestation and Degradation in Sangha / Likouala



# Intervention Strategy

- ❑ Combination of enabling and sectoral activities
- ❑ Main packages of activities to address priority drivers:
  - ❑ Local and national land use planning to improve land governance
  - ❑ Sustainable community livelihoods based on agroforestry and PES to address slash and burn agriculture
  - ❑ Provide incentives for forestry and agriculture companies to adopt forest-smart business practices

# Institutional Arrangements

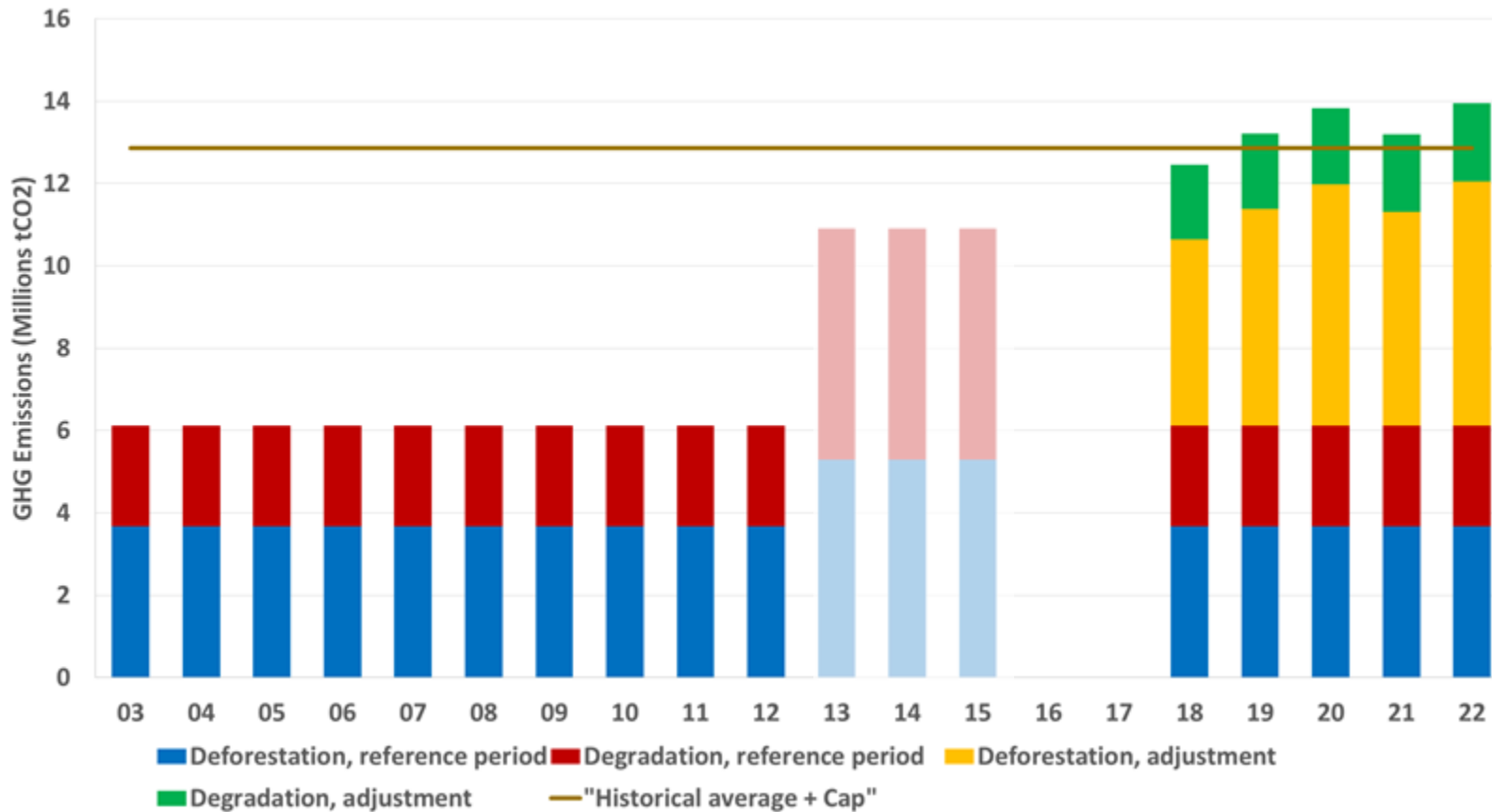


# ER Program Budget and Financing

Finance source		Estimated amount in million USD directly supporting ER-Program activities
<b>Secured sources (pledged or committed)</b>	GEF (WB and UNDP)	8.08
	FIP	16.00
	FIP DGM	4.50
	VPA-FLEGT	5.02
	DFID	6.17
	AFD	13.81
	WB IDA (Integrated Public Sector Reform Project)	1.50
	WB IDA (Commercial Agriculture Project)	tbc
<b>To be mobilized</b>	CAFI	8.00
	GCF	tbc
<b>Private investments (expressions of interest)</b>	Companies and investors	29.54
<b>Total</b>		<b>92.63</b>

**Results-based finance: \$51 million**

# Reference Level



Reference Level	Annual Emission (tCO <sub>2</sub> /yr)
Average annual historical emissions from deforestation	3,666,847
Average annual historical emissions from degradation	2,460,368
Adjustment (annual average)	6,662,617
<b>Total Reference Level</b>	<b>12,789,832</b>



## Measurement, monitoring, reporting

- ❑ Program MRV fully integrated into NFMS
- ❑ CNIAF in charge of collecting activity data and monitoring
- ❑ PMU will report on GHG emissions
- ❑ Substantial capacity building has taken place and will continue
- ❑ MRV partially covered under ER Program costs, additional financing for MRV is included in the GCF proposal

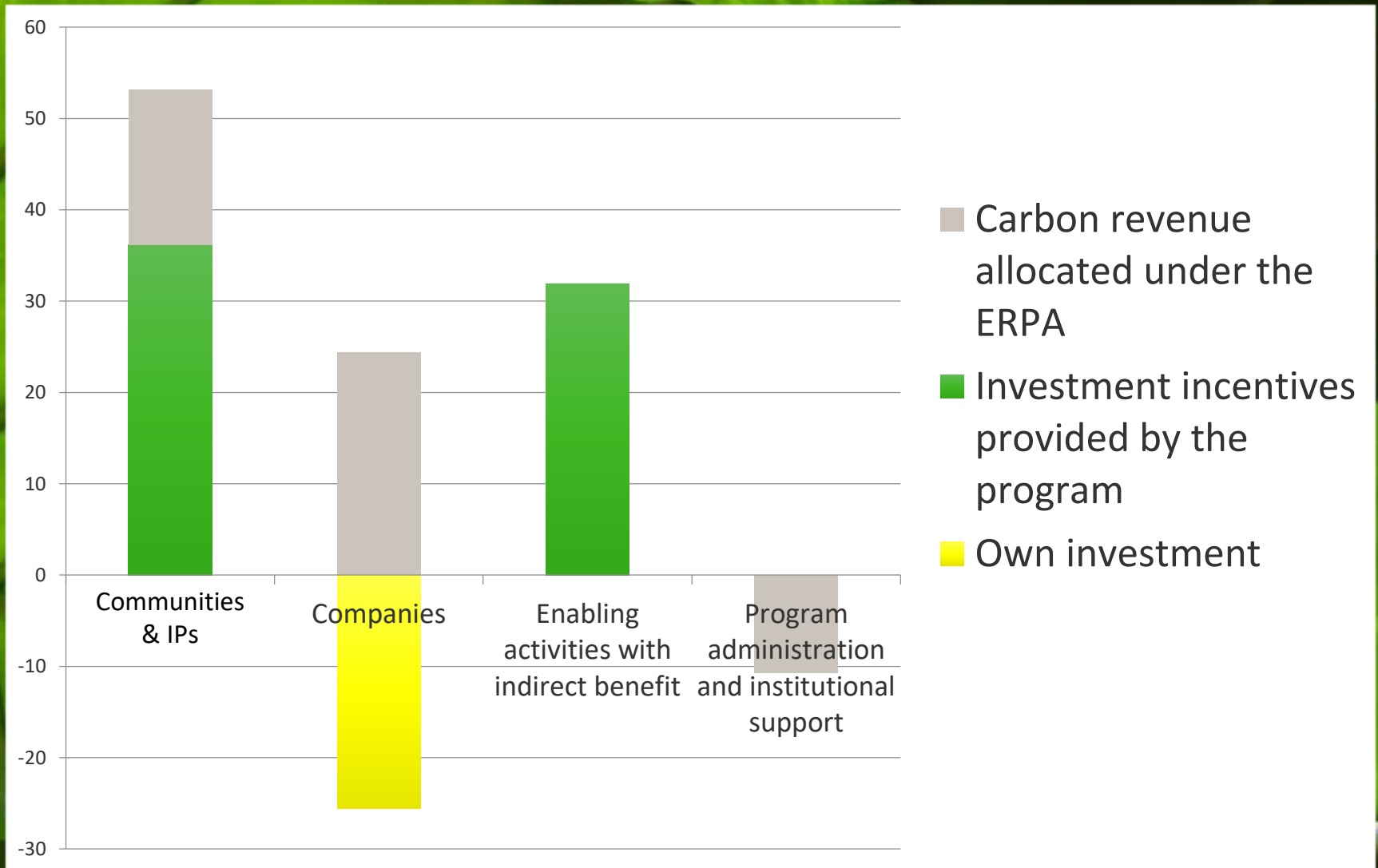
# Estimated emissions reductions

	Reduced Impact Logging	Logged to Protected Forest	Reduction of Forest Conversion from Industrial Palm	Smallholder Program	Set-aside of ER Risks and Uncertainty	Net Emission Reduction (tCO2)
<b>1</b>	1,139,459	59,455	303,071	131,724	506,450	1,127,259
<b>2</b>	1,433,015	59,455	606,141	145,008	695,522	1,548,098
<b>3</b>	1,567,728	59,455	909,212	286,892	875,219	1,948,069
<b>4</b>	1,701,108	59,455	1,212,283	775,339	1,161,938	2,586,248
<b>5</b>	1,728,353	59,455	1,515,353	1,033,786	1,344,454	2,992,494
<b>5-year total</b>	<b>7,569,664</b>	<b>297,276</b>	<b>4,546,060</b>	<b>2,372,749</b>	<b>4,583,583</b>	<b>10,202,168</b>
<b>%</b>	<b>51.20%</b>	<b>2.01%</b>	<b>30.75%</b>	<b>16.05%</b>		

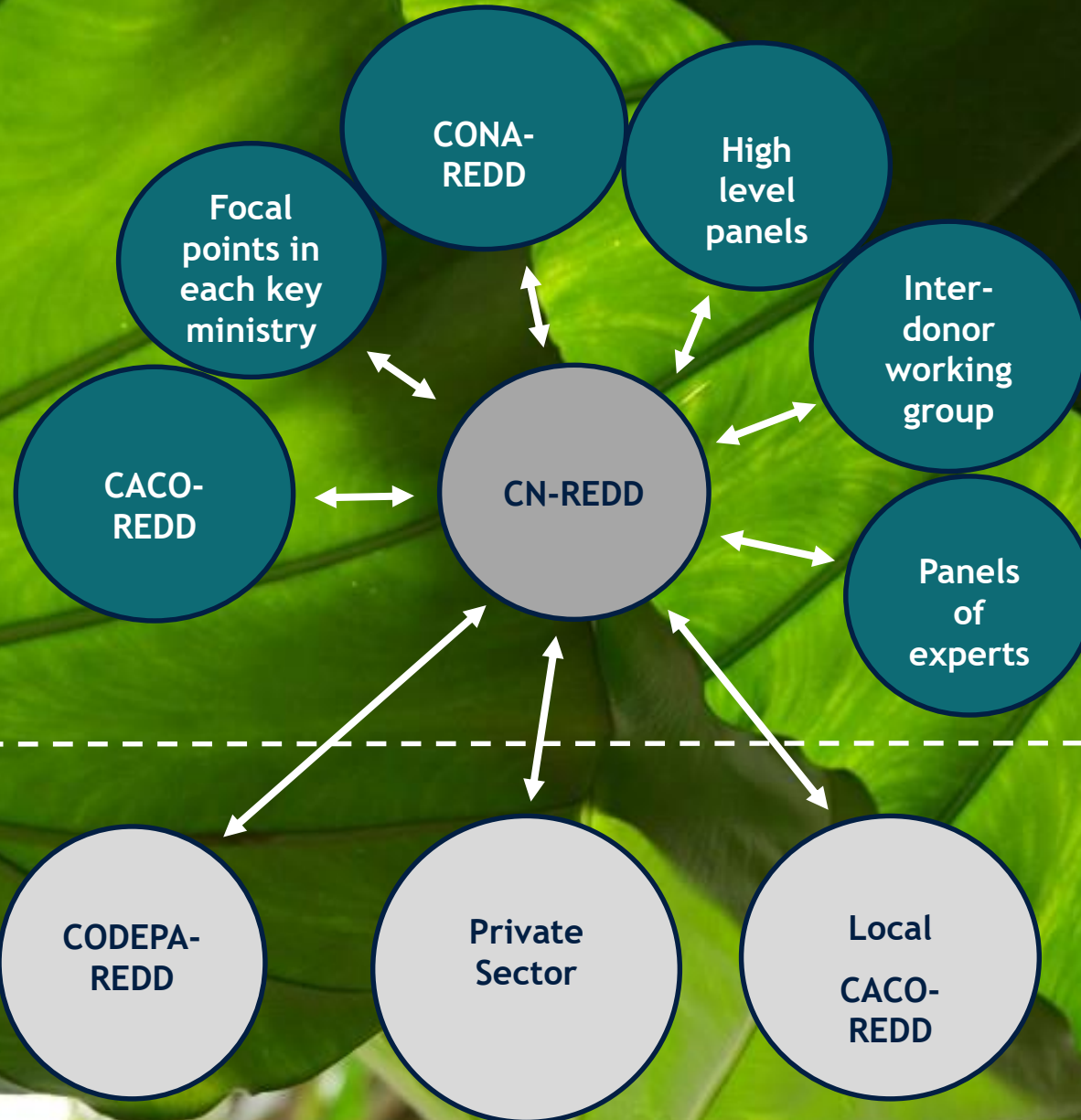
## Safeguards

- ❑ ER Program integrated into national REDD+ system: National REDD+ Strategy, SESA, safeguards instruments (ESMF, 5 sub-frameworks) completed
- ❑ Respect of REDD+ social and environmental standards to be enshrined in new forest code
- ❑ Supervision of safeguards application by:
  - ❑ Safeguards unit in Ministry of Forest Economy, Sustainable Development, and Environment
  - ❑ Program Management Unit

# Benefit sharing



# Stakeholder consultation and participation



National

Departmental



THANK YOU FOR YOUR ATTENTION



# Principal interventions

