



TAP Independent Review of Mexico's Readiness-Package

Juan Andrés López-Silva

FCPF PC 21, Washington DC

May 3-5, 2016



Purpose of TAP's review



PURPOSE

- Assess due process and approach in performing R-Readiness self-assessment in Mexico
- Assess R-readiness progress and challenges to be addressed when transitioning to ER phase



TAP's R-Package Self-Assessment Review



CONTENT

- PART A: Review of self-assessment PROCESS and RESULTS
- PART B: Review of PROGRESS on REDD+ Readiness
- Summary Assessment and recommendations



Part A: Self-Assessment Process



- Consultations for the self assessment process took place through 4 different workshops:
 - Indigenous and Farmers Working Group (national representation)
 - National CTC-REDD+ (national representation)
 - Yucatan Peninsula (regional representation of 3 states: Yucatan, Campeche and Quintana Roo)
 - Chiapas State (state representation)
- FCPF Readiness Assessment Framework Guidelines were rightly followed
- Building on Mexico's comprehensive multi-stakeholder consultation process, for building Mexican Vision on REDD+ and ENAREDD+, SESA, Consultation Plan (including local communities, farmers, indigenous peoples, women groups, young groups, NGOs, academia, research centers, government officers from federal, state and local representation, plus civil society)
- Good set of information and pilot workshop to test and help prepare self assessment. The report was very comprehensive and providing links to underpinning information and reference documents





Review of Progress

Average Rating

**FOREST
CARBON
PARTNERSHIP
FACILITY**

Component	Sub-Component	Average Rating (Color Coded)
Component 1: Readiness Organization and Consultation	Subcomponent 1a: National REDD+ Management Arrangements	
	Subcomponent 1b: Consultation, Participation, and Outreach	
Component 2: REDD+ Strategy Preparation	Subcomponent: 2a. Assessment of Land Use, Land-Use Change Drivers, Forest Law, Policy and Governance	
	Subcomponent: 2b. REDD+ Strategy Options	
	Subcomponent: 2c. Implementation Framework	
	Subcomponent: 2d. Social and Environmental Impacts	
Component 3: Reference Emissions Level/ Reference Levels		
Component 4: Monitoring Systems for Forests, and Safeguards	Subcomponent: 4a. National Forest Monitoring System	
	Subcomponent: 4b. Information System for Multiple Benefits, Other Impacts, Governance, and Safeguards	

Review of Progress



Self Assessment Rating according to consultation type



Component	Sub-Component	Yucatan Peninsula	Chlapas State	National CTC	Indigenous and Farmers
Component 1: Readiness Organization and Consultation	Subcomponent 1a: National REDD+ Management Arrangements	5	4	5	5
	Subcomponent 1b: Consultation, Participation, and Outreach	7	4	4	6
Component 2: REDD+ Strategy Preparation	Subcomponent: 2a. Assessment of Land Use, Land-Use Change Drivers, Forest Law, Policy and Governance	7	5	5	5
	Subcomponent: 2b. REDD+ Strategy Options	6	4	5	6
	Subcomponent: 2c. Implementation Framework	6	4	4	5
	Subcomponent: 2d. Social and Environmental Impacts	5	4	6	6
Component 3: Reference Emissions Level/ Reference Levels		8	8	5	6
Component 4: Monitoring Systems for Forests, and Safeguards	Subcomponent: 4a. National Forest Monitoring System	7	7	6	7
	Subcomponent: 4b. Information System for Multiple Benefits, Other Impacts, Governance, and Safeguards	7	4	6	6

Self-Assessment Results

Rating Grouped by Color Code and Consultation Type

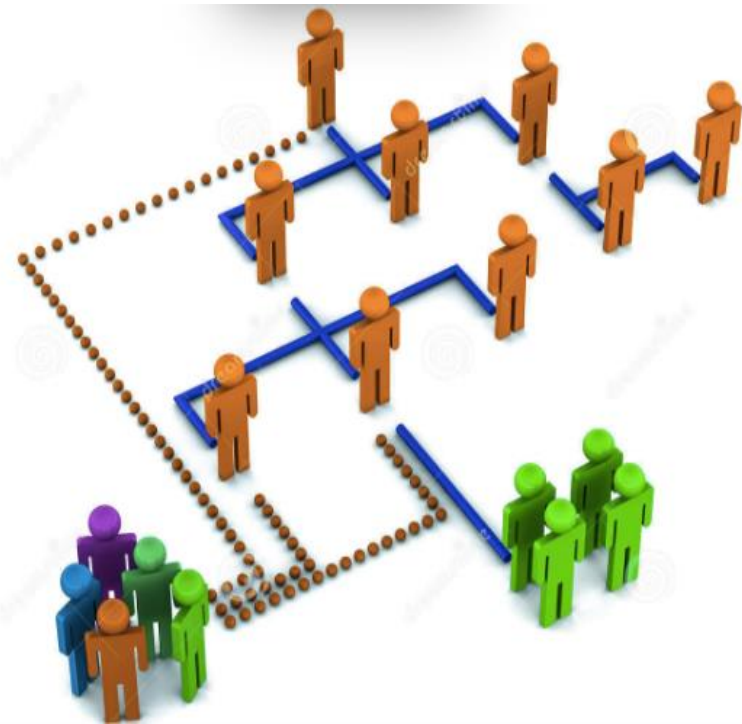
CONSULTATION TYPE	GREEN	YELLOW	ORANGE	RED
YUCATAN PENINSULA	3	23	8	0
CHIAPAS STATE	2	11	17	4
NATIONAL CTC	0	17	17	0
INDIGENOUS AND FARMERS	0	27	7	0
TOTAL	5	78	49	4

- Most ratings are yellow, which indicates a recognition of progress although in need of further development
- Indigenous peoples and farmers, and the participants from the Yucatan Peninsula seem to be more satisfied with ENAREDD+ progress



Part B: Self-Assessment and Progress Review per Component

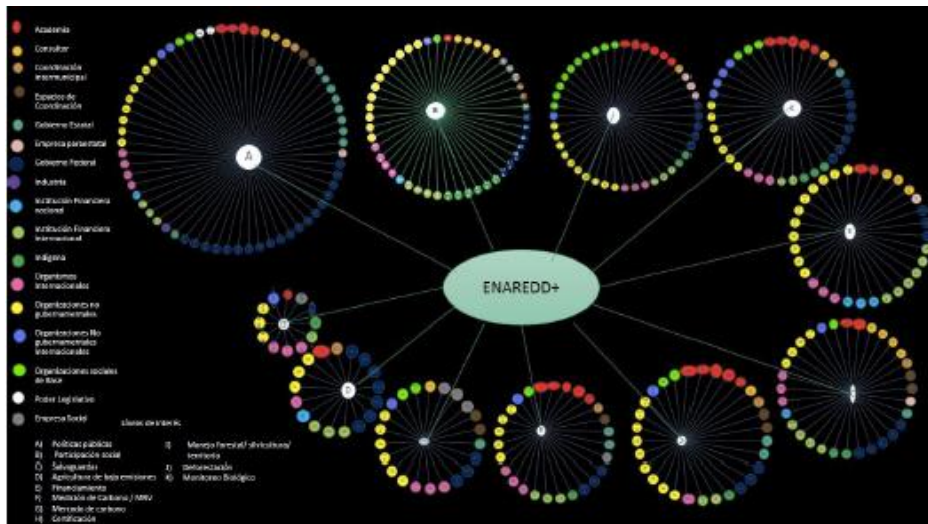
Component 1: Readiness, Organization and Consultation



- Stakeholders expressed concern by the apparent lack of institutional coordination, with multiple institutions and programs, and lack of continuity
- Stakeholders prefer stronger coordination at local level
- Although the Complaints and Grievance Redress Mechanisms (CGRM) exist not only at CONAFOR but at other institutions, stakeholders demand better feedback, presentation of how results of consultations were considered
- TAP recommendation is to keep better track about actual comments and suggestions and on how these have been addressed

Part B: Self-Assessment and Progress Review per Component

Component 2: REDD+ Strategy Preparation

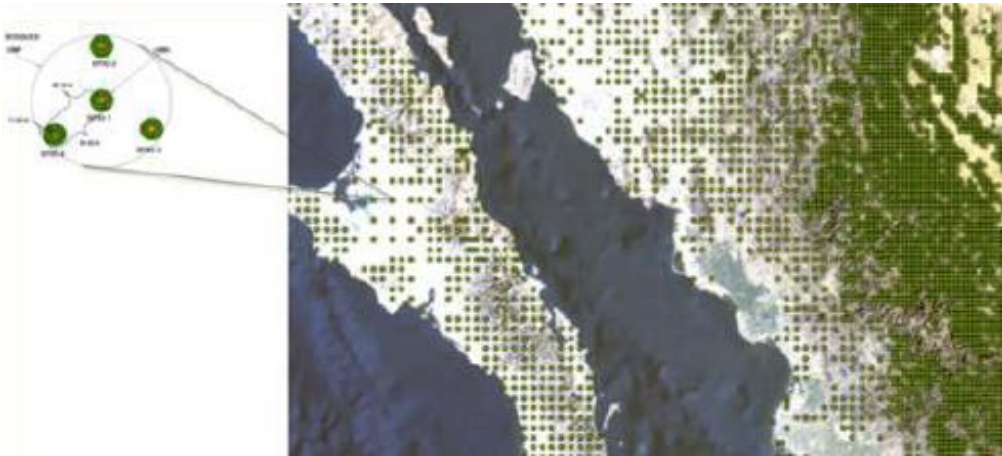


- Land tenure and land-use perceived as challenge for REDD+ implementation and stakeholders consider this needs further development
- Also, stakeholders require more information on deforestation and degradation drivers
- Stakeholders expressed worries related to relationship between conservation and agricultural and livestock production and how a balance can be struck
- Additional feedback is required regarding carbon rights and benefit distribution and how traditional land ownership and production relates to carbon revenues and distribution
- Stakeholders would like to have stronger feedback on their participation
- Stakeholders consider that completion of consultation process should be reported back and results be presented, in particular with regards to ESMF. TAP recommends better reporting back to stakeholders



Part B: Self-Assessment and Progress Review per Component

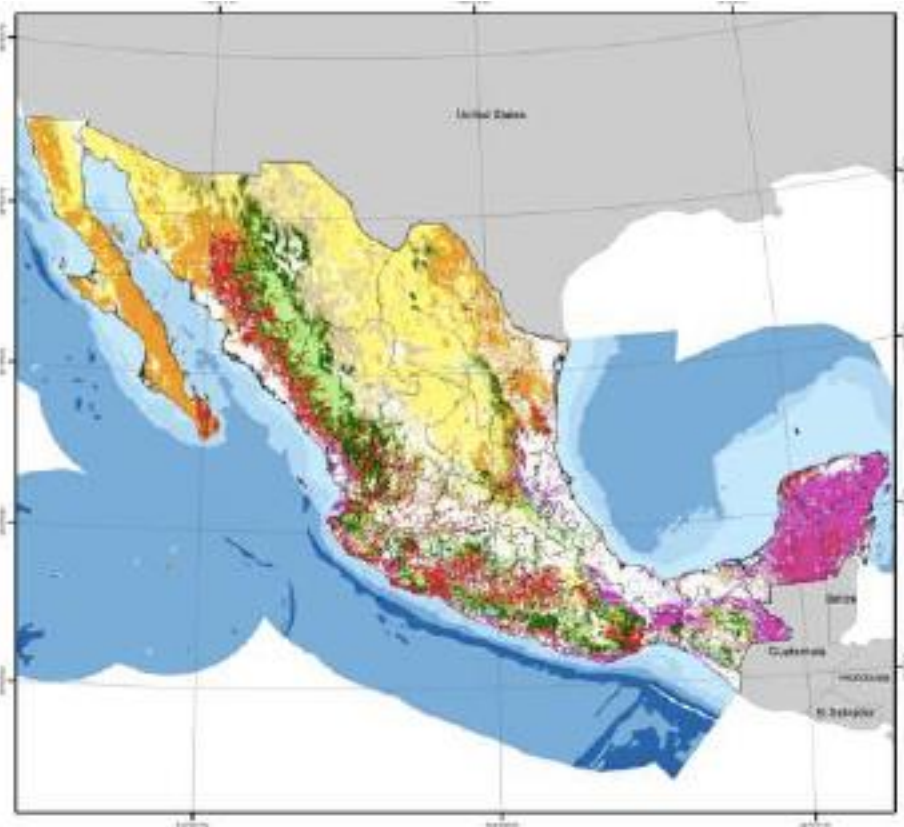
Component 3: Reference Emissions Level/Reference Levels (criteria 26-28)



- Good perception about progress and consistency with UNFCCC and IPCC
- Stakeholders to be kept up to date with relation to the incorporation of degradation monitoring, and with respect to the progress related to faster data (automated) and resolution and precision enhancement
- Local participation could be used to improve or provide feedback on actual calibration using ground data and local feedback

Part B: Self-Assessment and Progress Review per Component

Component 4: Monitoring Systems for Forests, and Safeguards (criteria 29-34)



- Stakeholders consider that there is good progress with relation to monitoring, but demand better dissemination
- More active participation at the local level could be built as a mechanism for capturing local data and info
- Stakeholders require more information on co-benefits especially at the social level
- Better perception of co-benefits can lead to stronger ownership and support, in particular when dealing with conservational vs productive land-use options

Summary Assessment

Self Assessment Process



Mexico's vision clear from the beginning

ENAREDD+ has long been focused to the majority of forest tenants, which are the communities that hold social land rights. The early initiatives have consistently focused on the States in Mexico where ejidos and communities account for most of the forest direct stakeholders. Therefore, the consultation processes including the self-assessment has rightly targeted the most relevant stakeholders.

Overall R-Readiness Progress



TAP Reviewer considers that the Self-Assessment Report, together with the R-Package information confirms that Mexico's progress on REDD+ readiness is solid to move to the next ER phase.



Recommendations moving forward



- Although Mexico has engaged on a comprehensive participatory process, based on stakeholders comments, it is recommended that further dissemination and knowledge sharing efforts are made, especially to show how the different comments and suggestions from the various consultations have been taken into consideration in producing the different R-Package elements
- Under the ER phase, involving local communities on sustainable low carbon agriculture should be a priority. Special emphasis should be placed on identifying and disseminating co-benefits, and how these relate to productivity risks
- Perceived gaps on legal rights and benefit distribution from carbon revenues should have receive special attention under the next phase
- Participation of private sector should be strengthened, especially for next ER and investment phase





THANK YOU

