

PROVIDING GUIDANCE FOR PILOT PROGRAMS

Zahrul Muttaqin

Forestry Research and Development Agency (FORDA)



OUTLINE

- ⊗ The Progress of Indonesian REDD+ Readiness
- ⊗ Demonstration Activity (DA) in Indonesia
- ⊗ Lessons learned from pilot projects (DAs)
- ⊗ The national standard for establishing DA
- ⊗ Making REDD+ works in Indonesia



THE PROGRESS OF INDONESIAN REDD+ READINESS

⊗ REL

- ⊗ Province-level RELs have been drafted for 11 priority provinces

⊗ MRV

- ⊗ Design document for a national MRV system prepared and under consultation
- ⊗ Data collection & capacity building at local level achieved

⊗ Safeguards

- ⊗ Safeguards Information System (SIS)
- ⊗ Principles, Criteria and Indicators for REDD+ Safeguards in Indonesia (PRISAI)
- ⊗ Strategic Environmental and Social Assessment (SESA)

⊗ Benefit Sharing

- ⊗ Several options have been proposed: fiscal transfers, National Community Empowerment Program (PNPM)

⊗ Governance Reforms

- ⊗ Land / forest tenure clarification (Adat community rights, change in the definition of the State forest domain)
- ⊗ Forest Management Units (KPH)

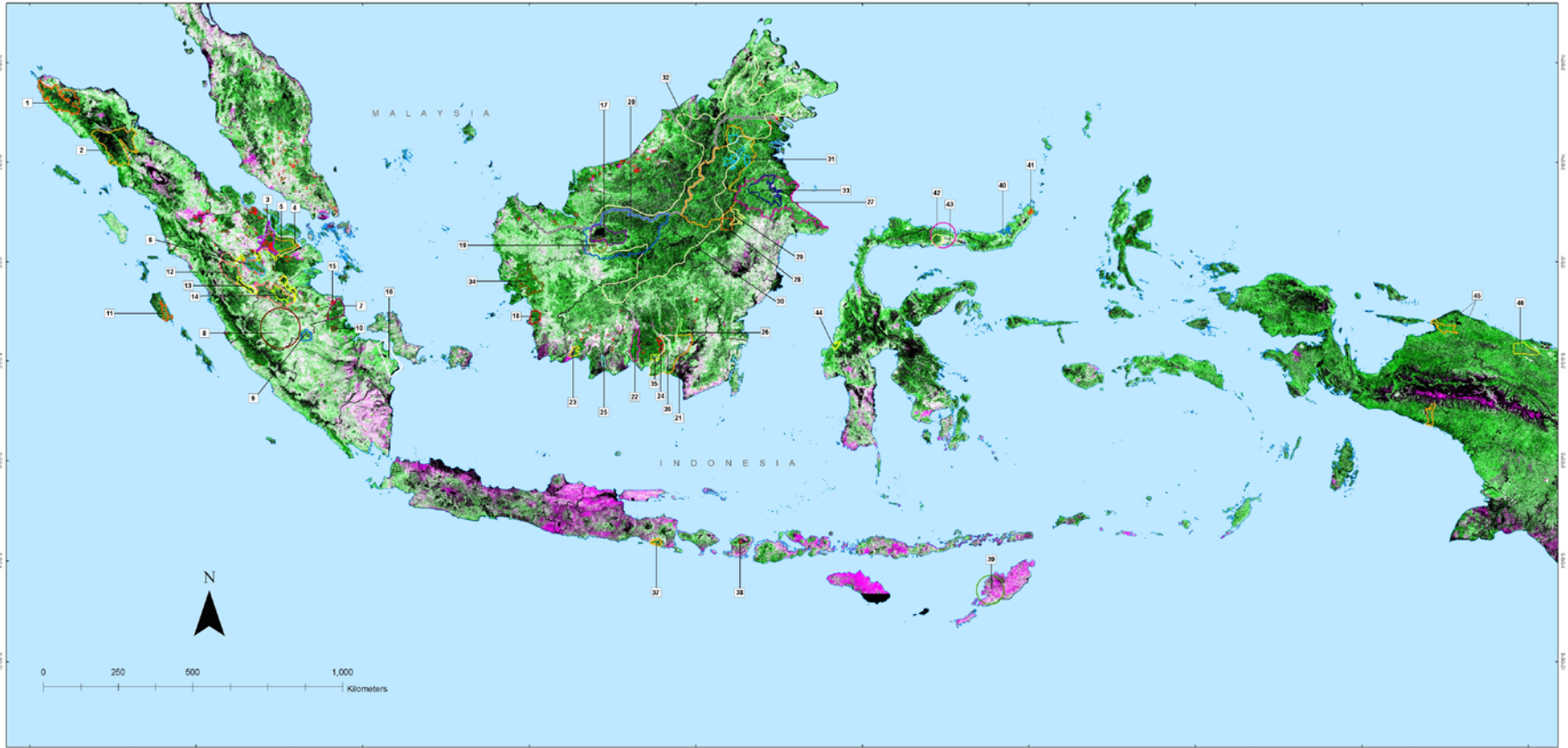


DA REDD+ IN INDONESIA

- ❁ COP 13 Bali suggested to have demonstration activities in the readiness phase of REDD+
- ❁ DA has an important roles:
 - ❁ Providing lessons learned and transfer of knowledge to the initiatives of REDD+, both at the national, sub-national (provincial/district/city) and local/site
 - ❁ Exercising the eligibility of REDD+ in accordance with the development of international agreements in the preparation of the implementation of REDD+ such as: preparation of REL/RL/baseline, the implementation of the MRV, and system safeguards.
- ❁ More than 30 REDD+ pilot projects in the form of demonstration activities have been developed in the last 6 years



Indonesia REDD Demonstration Projects



- Sumatra :**
1. Reducing Carbon Emissions from Deforestation in the Ulu Masen Ecosystem – A Triple-Benefit Project
 2. Leuser Ecosystem REDD Project
 3. Kuala Kampar Pilot Project – REDD
 4. Kampar Peninsular: Integrated Sustainable Development, Community and Conservation Landscape Management
 5. Kampar Carbon Reserve a REDD-Plus Project
 6. Tesso Nilo Pilot Project – REDD
 7. Bertak Carbon Value Initiative
 8. Sumatra Forest Carbon Partnership
 9. Harapan Rainforest Project
 10. Merang REDD Pilot Project (MRPP)
 11. Global Green Ecosystem Restoration Project
 12. WWF - Kuala Kampar Forest and Peat Blog
 13. WWF - Kuala Kampar Wild Life Corridor
 14. The Bukit Tigapuluh Ecosystem Conservation
 15. Avoidance of Peat Aerobic Degradation by Peatland Rewetting and Rice Husk-based Power Generation Associated with Rice Production Increase in Jambi Province
 16. Mangrove REDD+ Reduction of CO2 Emission and Enhancement of CO2 Sequestration - Feasibility Study for BOCM
- Kalimantan :**
17. Ecosystem Restoration in Kapuas Hulu
 18. Restoration Ecosystem in Ketapang
 19. West Kalimantan Community Carbon Pool
 20. FORCLIME-Kapuas Hulu Demonstration Activity
 21. Kalimantan Forests and Carbon Partnership (KFCP)
 22. Kalingan Peat Restoration and Conservation Project
 23. The Lamauau Wildlife Reserve
 24. Sebangau National Park Peatland Restoration Project

25. The Rimba Raya Biodiversity Reserve Project
 26. Mawas Peatland Conservation Area Project
 27. Berau Forest Carbon Program
 28. East Borneo Project
 29. Orangutan Habitat Restoration Program
 30. Spatial Transformation of Low-Carbon Emissions in West Kutai Regency
 31. Avoided Deforestation & Resource Based Community Development Program
 32. FORCLIME - Malinau Demonstration Activity
 33. FORCLIME - Berau Demonstration Activity
 34. REDD+ within Palm Oil Concession in West Kalimantan Sector in West Kalimantan
 35. New Mechanism Feasibility Study for REDD+ in Central Kalimantan Province, Indonesia
 36. REDD+ Project Through Preventing Large Scale Peatland Fire in the Central Kalimantan
- Java and Nusa Tenggara:**
37. Tropical Forest Conservation for REDD and Enhancing Carbon Stocks in Meru Betiri National Park
 38. Korea-Indonesia Joint Project for Adaptation and Mitigation of Climate Change in Forestry - REDD+ Project
 39. Towards Enabling Mitigation of Climate Change Through Promotion of Community-based Economic Growth (TEBE Project)
- Sulawesi:**
40. Forest Land Use and Climate Change in North Sulawesi (FLUCC) in the Pogar Forest
 41. Carbon Valuation and Biodiversity Conservation in Gunung Kiabat and Gunung Wau Forests
 42. Gorontalo REDD+ Project with Safeguard Program
 43. Nanto Forest Conservation
 44. Mamuju Habitat
- Papua**
45. Perpetual Finance for Carbon Benefits
 46. Community REDD+ Readiness in Jayapura District

Source :

1. Ministry of Forestry Thematic Basemap.
2. Ministry of Forestry, 2009.
3. REDD sites from various source.

Disclaimer:
 This map aimed to show distribution of REDD demonstration projects in Indonesia. It compiled from many sources and it is not represent actual boundaries due to undisclosed information or in the stage of proposing permits or areas haven't decided yet. For further information, please visit Forest Climate Center website: <http://www.forestclimatecenter.org>

(Peta ini bertujuan untuk menunjukkan distribusi proyek-proyek demonstrasi REDD di Indonesia. Informasi dalam peta ini dikumpulkan dari berbagai sumber dan tidak menggambarkan batas sebenarnya karena beberapa informasi tidak terbuka untuk publik atau daerah yang diumumkan belum mendapatkan persetujuan atau belum diputuskan. Untuk informasi lebih lanjut, silahkan kunjungi website Forest Climate Center di <http://www.forestclimatecenter.org>)

Updated March 2012



www.forestclimatecenter.org / www.sekala.net



Learning from DA (1)

- ⊗ Tenure is the main challenge
- ⊗ Low economic incentives from REDD+
- ⊗ Different arrangements for different forest functions:
 - ⊗ Conservation
 - ⊗ Protection
 - ⊗ Production
- ⊗ Use input-based payments



Learning from DA (2)

- ⊗ The success of DA is determined by the participation and empowerment, as well as the support of the stakeholders in the area
- ⊗ Need a strong spatial plan to ensure the permanence of DA
- ⊗ Need regulatory/policy framework for developing a DA
- ⊗ Need to establish a methodological framework to be used in the development of DA that can be synchronized with national MRV system



DEVELOPING A GUIDANCE FOR DA REDD+

- ⊗ The diversities of forest condition, as well as socio-economic situation linked to the forests, have led to the variety of DAs → need a common agreement to minimize the differences among REDD+ initiatives
- ⊗ Providing a national guidance can help minimizing the gaps among DAs → the guidance should consider:
 - ⊗ the mandates of international decisions such as the Annex Indicative Guidance (COP 13)
 - ⊗ Current international carbon market arrangements such as Verified Carbon Standard (VCS) and the Climate Community and Biodiversity Standard (CCBS)
 - ⊗ the Intergovernmental Panel on Climate Change (IPCC) Good Practice Guidance for Land Use, Land Use Change and Forestry, IPCC guidelines for National Greenhouse Gas Inventories
 - ⊗ Other international standards



The National Standard

- ⦿ Center for Standardization and Environment, Ministry of Forestry has established a national standard for developing a demonstration activity for REDD+ and has been regulated through “Indonesian National Standard (SNI) No. 7848:2013 on the Implementation of Demonstration Activity for REDD+”
- ⦿ DA REDD+ is defined as:
 - ⦿ “Field activities aimed at reducing carbon emissions and/or improving carbon stock and/or conserving carbon stock through REDD+ scheme based on land use, land-use change and forestry as a means of learning, including testing, and developing methodologies, technologies, institutions, capacity building and implementation of safeguards and/or result-based actions that can lead to payments and/or incentives for the emission reduction/prevention or the improvement of forest carbon stock”



General Conditions

- ⊗ Inline and supporting of the national REDD+ strategy and policy as well as National Action Plan for Reducing Greenhouse Gases;
- ⊗ Have a secured location;
- ⊗ The location can be applied to areas that can be categorised as “forest” or “forest would be”;
- ⊗ Have a financing plan or a clear and adequate investment;
- ⊗ There is an the activity to prepare the DA REDD+ aspects (methodology, technology, institutions, and capacity building);
- ⊗ Field activities related to REDD+ exist;
- ⊗ Have benefit and risk sharing mechanisms;



Specific Conditions

- ⊗ Administrative conditions
- ⊗ Technical conditions
 - ⊗ The boundaries of DA-REDD+
 - ⊗ The life of the project
 - ⊗ Reference Emission Level (REL)/Reference Level (RL)
 - ⊗ The operation of DA
 - ⊗ Safeguards → governance, environmental, social
 - ⊗ Measurement and monitoring of carbon emission reduction/prevention or carbon stock improvement
 - ⊗ Reporting
 - ⊗ Verification





TERIMA KASIH

