



Picture: beraukab.go.id

Linking Berau REDD+ Initiatives

with National Strategies

Saipul Rahman, Berau REDD WG

srahman@tnc.org

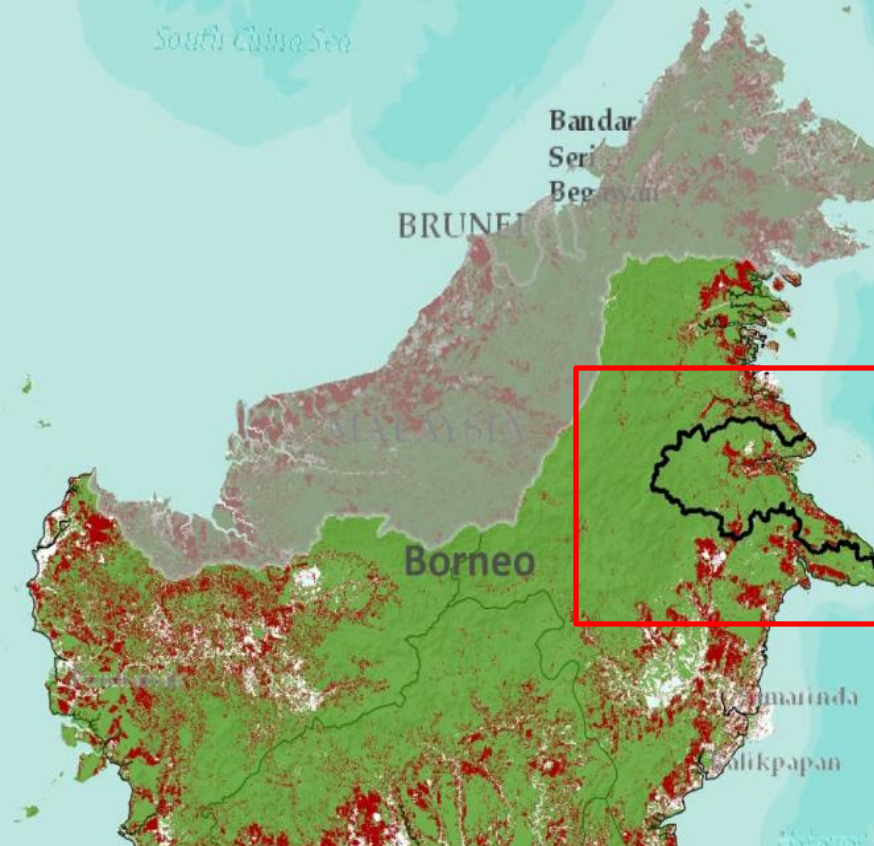
World Bank Asia Regional Workshop

Jakarta- June 2-4, 2014



Outline

- Program Description
- BFCP Interventions
- Benefit-Sharing
- Land Tenure
- Links to National Strategy Development
 - Topics where national strategy has supported or informed the pilot project
 - Topics where the pilot is expected to inform or support the national strategy

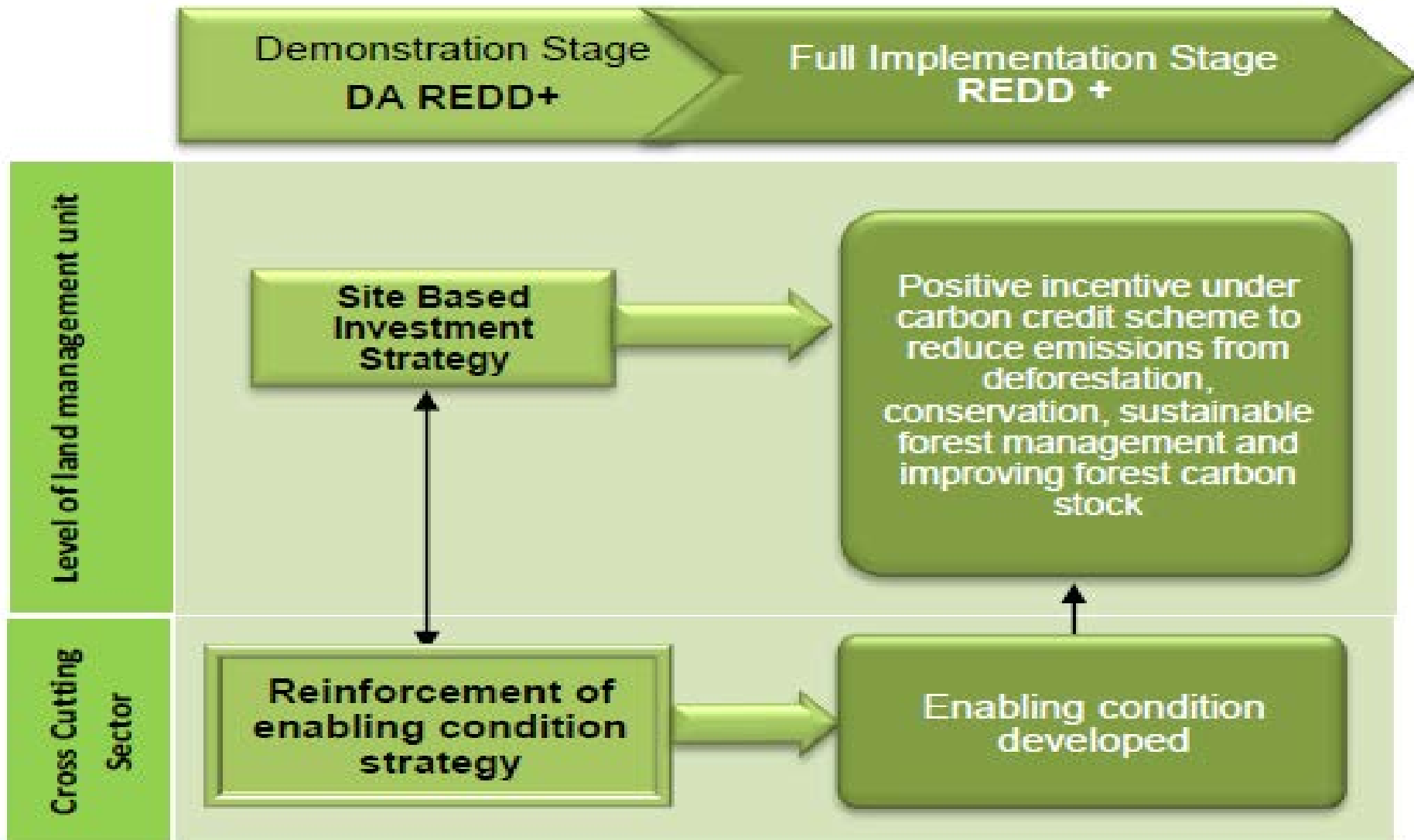


PROGRAM DESCRIPTION

- Berau District is a microcosm of Indonesian Borneo; located in East Kalimantan
- Forested = 75% of 2,19 million Ha of land
- Population 193,831 (BPS 2012) spread to 117 villages
- Mining (40% of GDP)
- 14 HPH companies = 880,000 ha of natural forest; 3 HTI companies = 60,000 ha of timber plantation forest.

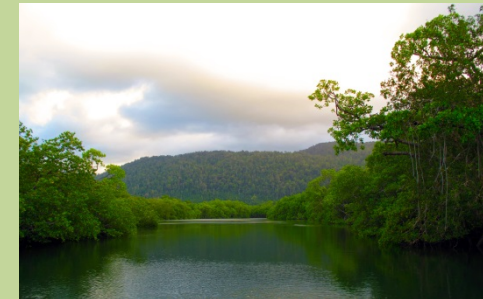
| Spatial Plan Zone | Area (ha/year mean 2001-10) | 2001-10 Mean CO2 Gross Emissions - (MgCO2/year) | %Emissions |
|--|-----------------------------|---|------------|
| Protected Area Deforestation | 64 | 37,619 | 0.4% |
| Forest Plantation (HTI) Deforestation | 4,008 | 2,476,628 | 24.1% |
| Logging Concession (HPT) Deforestation (logging haul road corridors) | 921 | 610,291 | 5.9% |
| Oil Palm etc. (APL) Deforestation | 8,341 | 4,714,174 | 45.8% |
| Other Deforestation | 128 | 123,352 | 1.2% |
| Legal Logging (skid/Fell) | na | 2,323,450 | 22.6% |

BFCP Interventions



BFCP Interventions

Site Based Investment Strategy



Sustainable
Production Forest
Management:
Prod Forest=889,000
ha; Certification
(PHPL, SVLK, FSC);
RIL C testing;
Supports KPH;
Forclime's DA;
reducing 3 million
TCO₂

Sustainable
Protection Forest
Management:
Prot Forest=
360.356,79 ha;
Community based
management by
Village Forest model
(8,245 ha);
integrated in KPH
management;

Sustainable Oil Palm
and Mining:
**MoU and Agreement
Land-based licensing;**
No significant specific
intervention on Mining;
Oil palm is in
preparation of specific
interventions; Reducing
7 million tCO₂

Mangrove
Management:
Management Body
integrated to Coastal
Park of Derawan;
Socialization; Planting
and rehabilitation by
local government

Benefit Sharing

- BFCP is Jurisdictional, benefit will be distributed at district level. Bundle the carbon rights across the district. Berau is part of Indonesia's ER-PIN.
- Stakeholders are involved in benefit sharing arrangement

- Tested in Community → Village Agreement :

Upon the signing of the incentive agreement, communities receive initial start-up funds to begin implementing the agreed-upon activities and the first -year livelihood and capacity building activities; subsequent funds are performance-based.

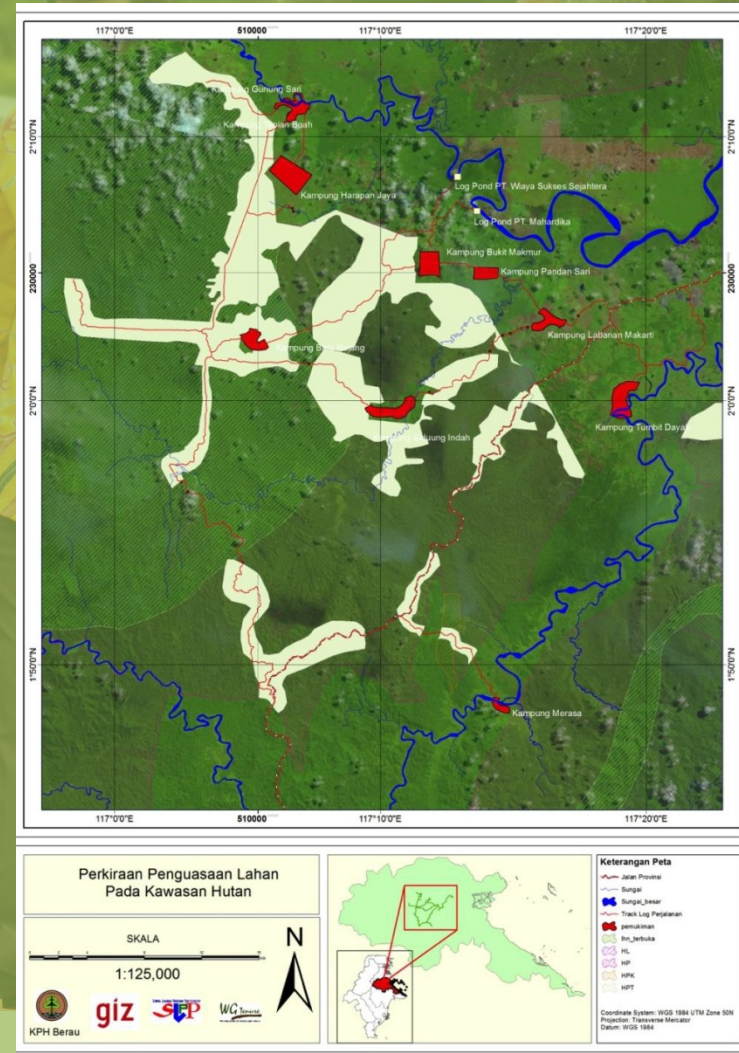
- Type of incentives

- » **Input-based incentives:** Provided annually, contingent on the community demonstrating that it carried out the natural resource management activities in the Natural Resource Management Plan.

- »» **Output-based incentives:** Awarded when certain milestones are achieved, such as a reduction in illegal logging or an increase in forest cover. Eg. building drinking water systems, installing micro-hydro for electricity or improving health clinics.

Land Tenure

- Berau → Forest Estate: 73%; Non Forest Estate: 27%
- Land tenure conflict still occurred in Berau: Companies-Companies; Communities-Companies; State-Communities
- REDD+ Program should generate Land Tenure Security including giving more access for communities
- *Village Forest in Kampong of Merabu 8,245 ha of protection forest*
- KPH Berau Barat has identified land conflicts in its areas (GIZ-WG Tenure)



Links to National Strategy Development

National strategy has supported:

- Institutionalization: BFCP' SC → Ministry of Forestry, Ministry of Interior, Ministry of Environment, Ministry of National Planning (Bappenas)
- Forest Management Unit (KPH) heavily supported by Ministry of Forestry and Bappenas
- Financial (TFCA, Forclime, FREDDI, Carbon Fund)
- MoU and Agreement of Land-based Licensing
- etc

Berau strategy has supported:

- **Jurisdictional Approach**
- Village Model Development (Kampong SIGAP REDD+) including benefit sharing concept, village planning; land tenure etc.
- **KPH model development** : linked to Climate Issues
- RIL C Practices. Testing RIL C Practices in Forest Concession, Policy works
- REL development. Work with Partners on Historical emission calculation
- MRV system development:
- etc

“Bundling” approach to internal allocation framework in jurisdiction

4

BUNDLING MAINTAINS OPTIONS FOR CARBON FINANCING

Bundling simplifies program management in light of uncertainties about carbon finance arrangements internationally. Approach could be adapted to:

- Carbon market with company buyers or government buyers
- Fund-based public financing from outside Indonesia
- Internal GOI payment/incentive transfer mechanism

1

JURISDICTIONAL PROGRAM CREATES ENABLING CONDITIONS

- District-wide carbon accounting
- Upfront finance
- Policy work
- Payment distribution mechanism

2

3

National Carbon Management Program

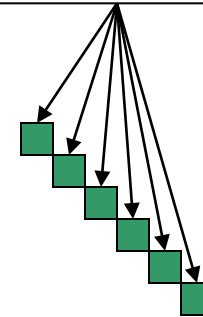
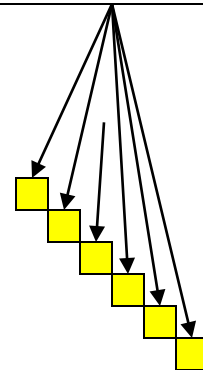
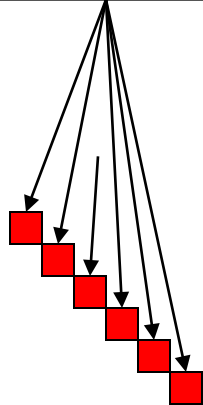
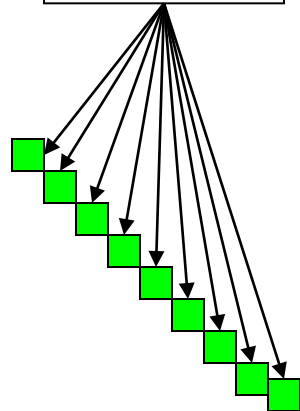
Program

Natural forest concessions

Villages

Palm Oil Concessions

Conservation or protection area



MODEL INCENTIVE AGREEMENTS FOR EACH PROJECT TYPE

Customized for each sector.
Common elements

- Manager commitment to achieve performance targets (e.g. FSC certification)
- Technical assistance delivered efficiently
- Financial incentives, including operations financing and performance payments
- Streamlined regulatory context

CUSTOMIZED AGREEMENTS

- Customized agreements are negotiated with each land manager
- Streamlined performance monitoring

Forest Management Unit

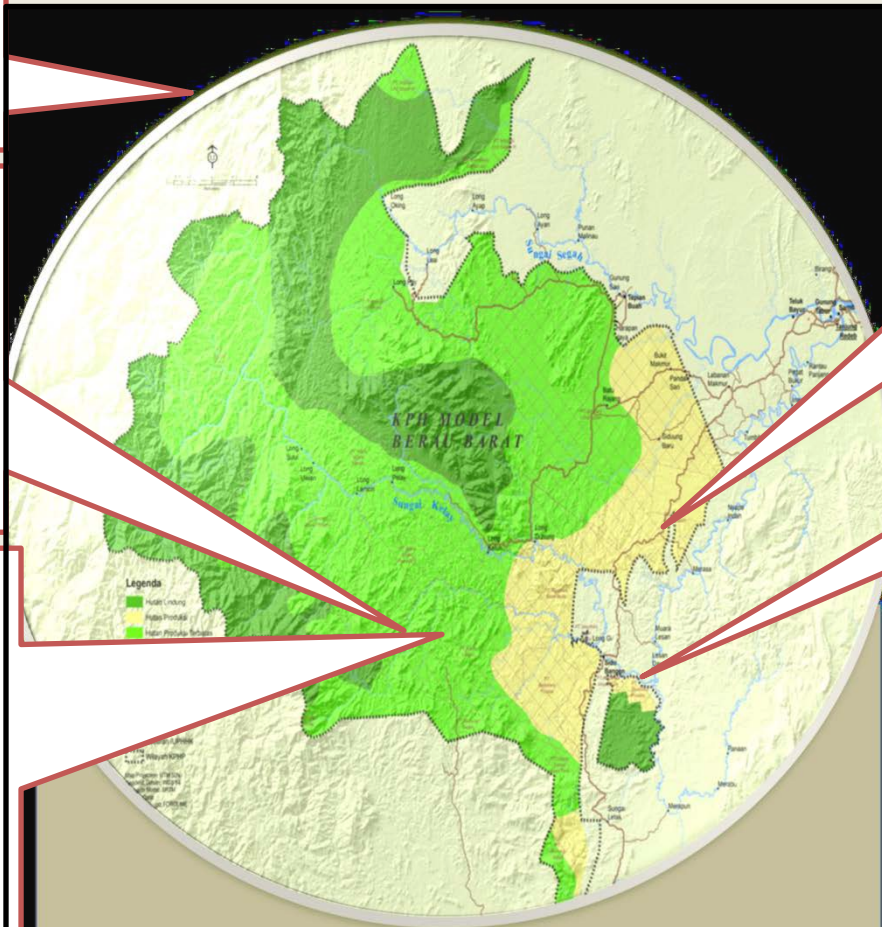
KPH need to be better in Planning, Objectives, Funding, Clear Authority and responsibility

Sustainable Production Forest

- Certification (PHPL, SVLK, FSC)
- Monitoring
- Forest Gazzetement
- RIL-C
- Law Enforcement

Communty Engagement

- Capacity Building
- Green Village (SIGAP Village-Model Village)
- Development Planning
- Economic Empowerment
- Collaborative Forest Management (monitoring, fire prevention, etc)

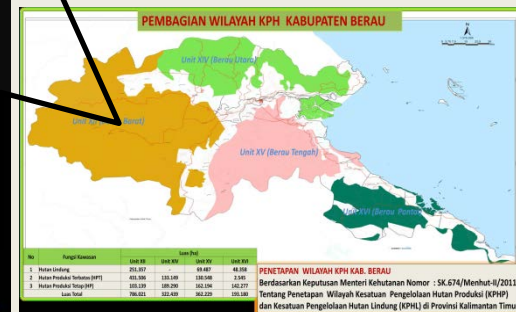


Conflict Resolution

- Conflict mapping
- Land Tenure Assesment

Protection Forest Management involving community and NGOs

FMU Model



| | | | |
|---|-------------------------------|------------|--------|
|  | HUTAN LINDUNG (HL) | 251.376 Ha | (32%) |
|  | HUTAN PRODUKSI TERBATAS (HPT) | 431.506 Ha | (35%) |
|  | HUTAN PRODUKSI (HP) | 103.139 Ha | (13%) |
| | LUAS TOTAL | 786.021 Ha | (100%) |

Pic is taken from KPH BB ppt

Terima kasih

