

LINKING PROJECT LEVEL REDD+ TO THE NATIONAL PROGRAMME

Experiences from Kenya

Bryan Adkins

Jakarta

June, 2014

**WILDLIFE
WORKS**

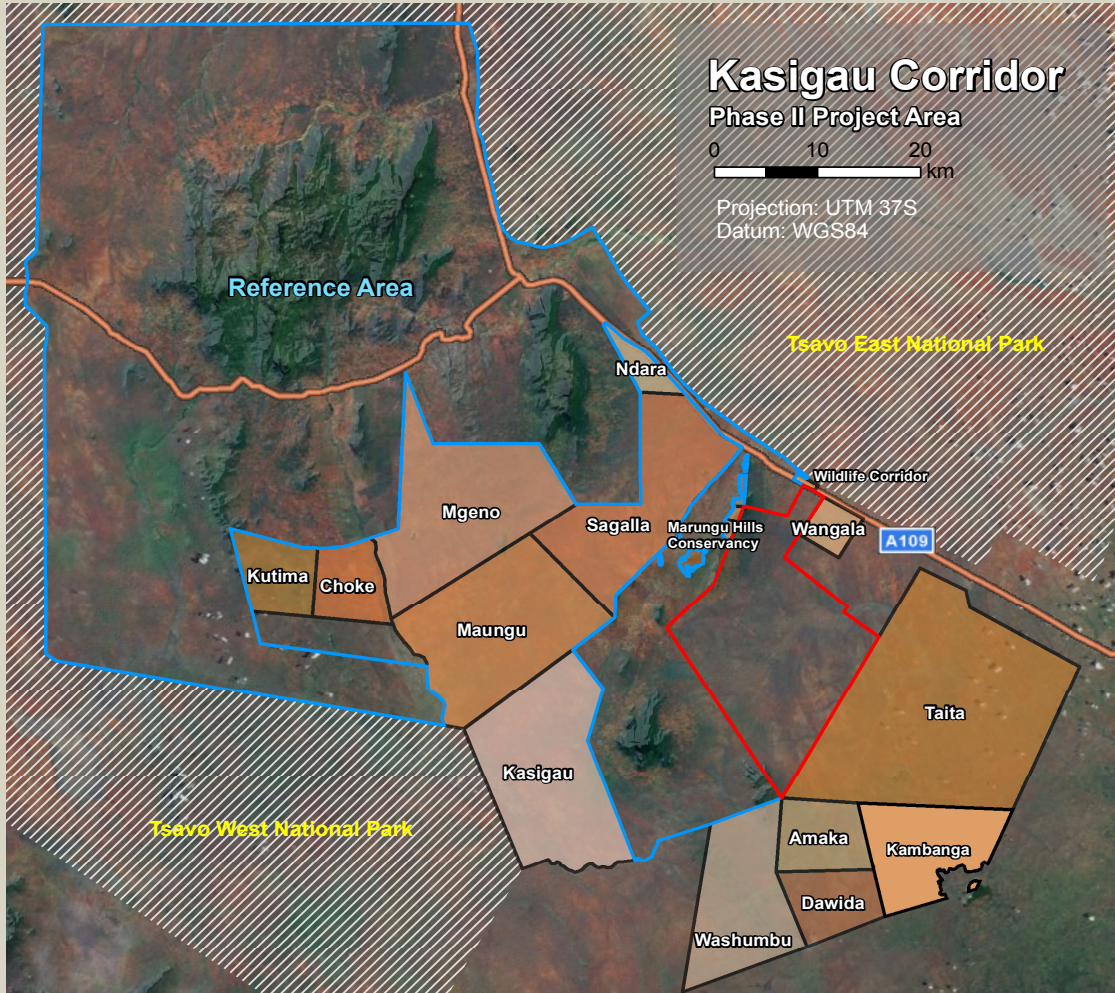


Wildlife Works Carbon and the Kasigau Corridor REDD+ Project

- Dryland woodland
- 200,000 ha
- 2 Phases
- 325 fulltime employees
- High biodiversity
- 3rd year of fully operating project
- Expanding by a further 100,000
- Part of portfolio of expansion:
Kenya and DRC


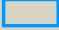
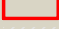



The Kasigau Corridor

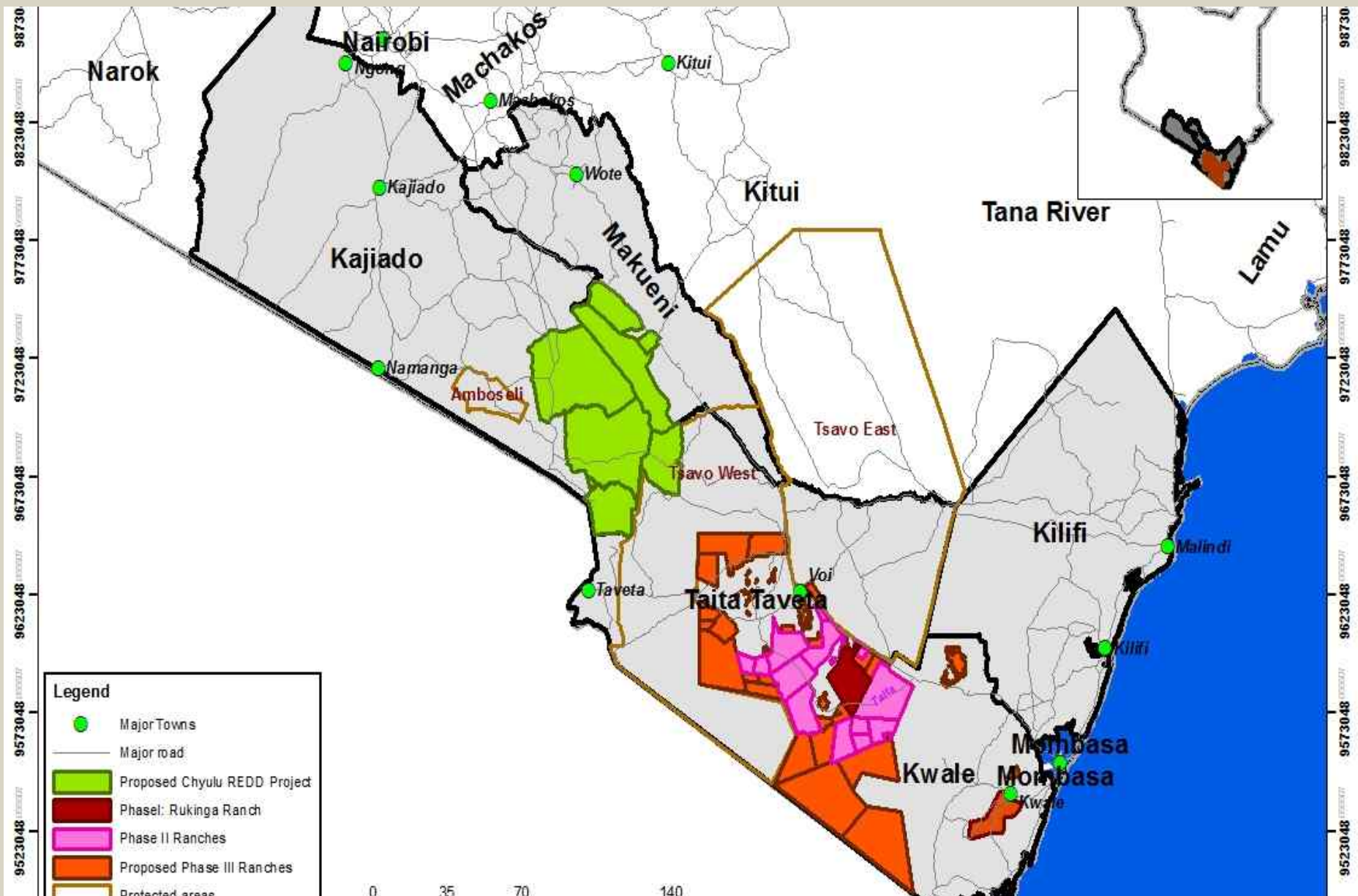


Phase II
Project Area: 173,616 ha

Reference Area
Total Area: 324,012 ha

-  Phase II Ranches
-  Reference Area
-  Rukinga Ranch
-  Natnl. Parks





Drivers of Deforestation / Conversion

- Illegal charcoal production
- Swidden agriculture
- Intense commercial biodiversity poaching



Key Interventions

- Alternative livelihood creation
- Agriculture Intensification
- Trees on farms
- Community projects
- Eco-charcoal
- Continuous monitoring
- Active Enforcement



Livelihood creation



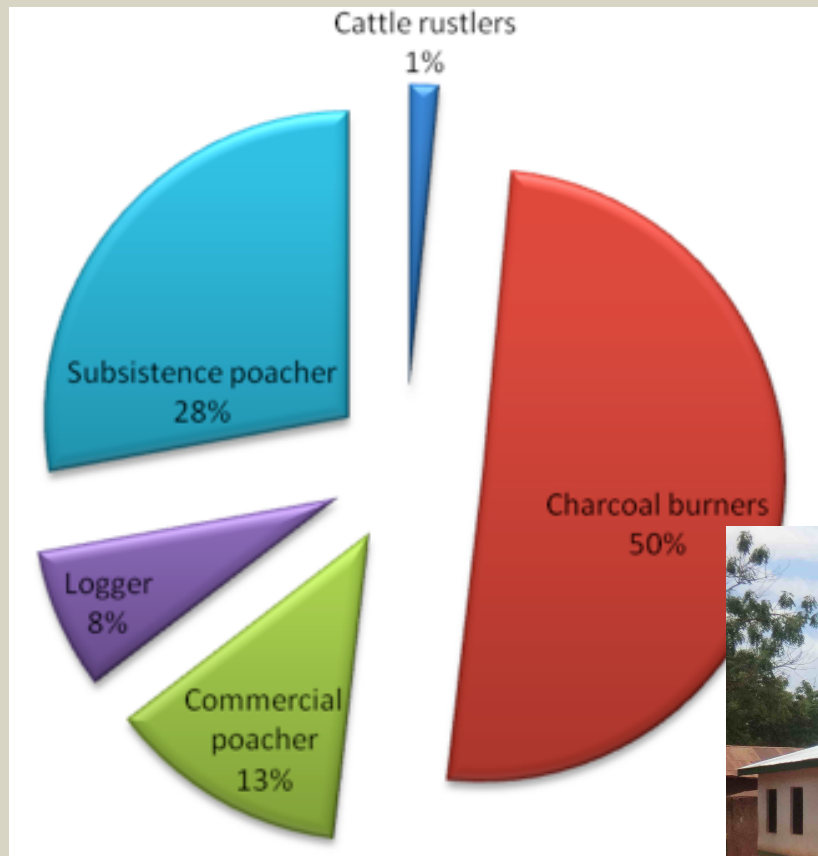
**Jobs in: skilled
labour,
enforcement,
MRV, operations
support, SMEs**



Intensification and Trees on Farms



Biodiversity, Carbon and Social Impact Monitoring



Strategic Partnerships



Linkages to National Program

- Benefit Distribution Design
- Use of conservation easements
- Ongoing involvement in the design of the national program through input into SESA, SLEEK processes etc.
- REL design and jurisdictional accounting options (White Paper)
- Policy engagement
- Lessons learned being generated and published: (
[http://www.tandfonline.com/doi/full/
10.1080/14693062.2014.905440#.U3muRmdZrIU](http://www.tandfonline.com/doi/full/10.1080/14693062.2014.905440#.U3muRmdZrIU))

Challenges and Opportunities

- Market forces
- Lack of National Strategy/Programme in place limits market
- Need for bilateral funding agreements to access capital
- Conflicting, emerging land uses/policy changes



Any questions?

