

REDD+ at Various Scales

Linking Local REDD+ Initiatives to National REDD+ Strategies

Jakarta, Indonesia

June 2014



Typologies

National



Only one operational national REDD+ program

Subnational

Project

Jurisdictional

Landscape



What is the difference between these different types, or scales, of REDD+ programs?

Projects vs. larger scale programs

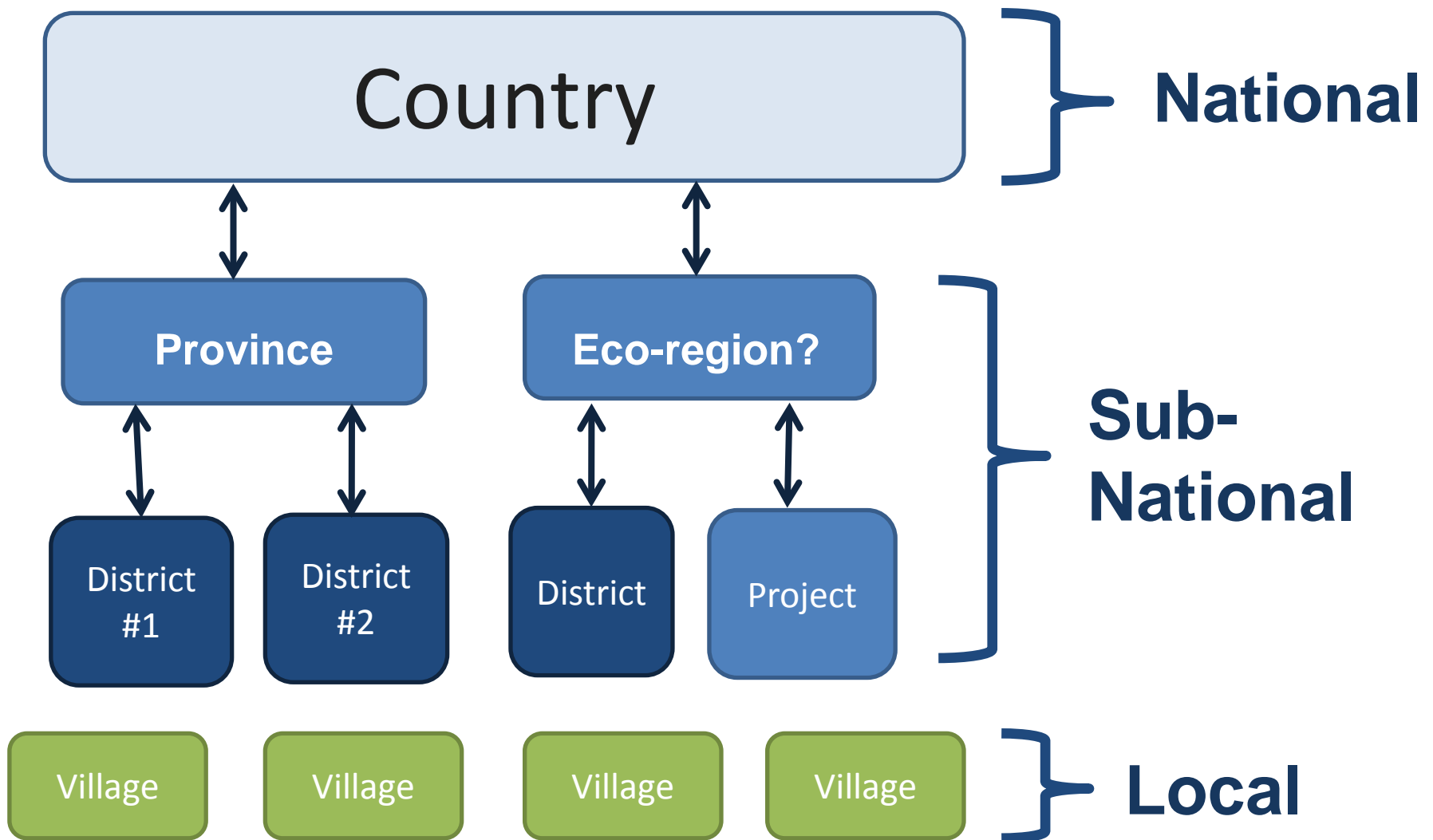
REDD+ Projects	Larger-scale programs
Ethiopia: Humbo (2,800 ha)	Guyana – national (21,500,000 ha)
Cambodia: Oddar Meanchey (64,831 ha)	Brazil - Amazon Fund (420,000,000 ha)
Kenya: Kasigau I, II (30,169 / 169,741 ha)	Nepal - Terai Arc (2,300,000 ha)
Indonesia: Rimba Raya (64,000 ha)	Indonesia - Berau (3,200,000 ha)

Costa Rica's ER-PIN proposes an area of **392,000 ha**
... is it a project or subnational program?

Subnational programs

	Jurisdiction	ER program area (ha)	% of country
Guyana	National	21.5 M	100 %
Brazil	Amazon biome	420 M	50 %
Ghana	Eco-zone, overlaps with 5 admin. Regions	5.9 M	25 %
Nepal	Terai Arc Landscape, 12 districts	2.3 M	15 %
Mexico	5 states, but not contiguous	29.3 M	15 %
DRC	Mai Ndombe Region	12.6 M	5.5 %

REDD+ is often implemented at multiple levels; accounting can also occur at one or more levels



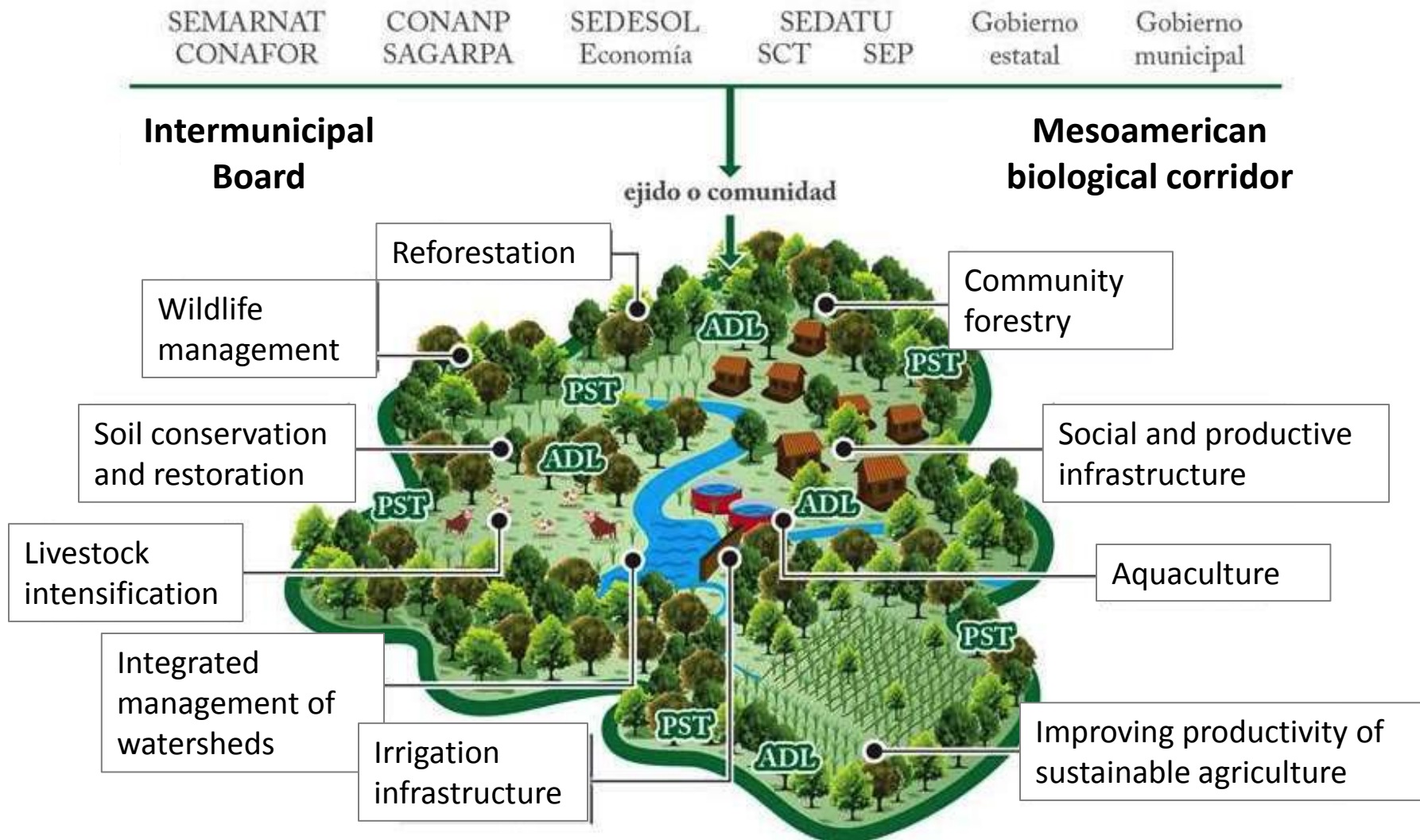
What does “landscape-level” mean?

Sustainable Landscapes / Integrated Landscape Management

- Agreed multiple objectives about land uses and its benefits
- Cooperative management at landscape scale and multiple levels.
- A multi-stakeholder, participatory process.



Example of a landscape program



What is this workshop about?

Linking local action to national REDD+ strategies

- What are lessons learned from local experiences?
- How can pilots at various scales inform national REDD+ strategies?
- How do national level policies and local level action interact?
- How to achieve vertical and horizontal cooperation in a landscape-level program?