

# BURKINA FASO

---



## Burkina Faso Readiness Preparation Plan

---

By Samuel YEYE, FIP focal  
point

Colombia – June 28th, 2012



# PRESENTATION OUTLINE



- 1. REDD IN BURKINA FASO***
- 2. MAIN ASPECTS OF THE R-PP***
- 3- INSTITUTIONAL ARRANGEMENTS***
- 4. ARTICULATION WITH THE FIP***
- 5. SUCCESSES SO FAR***
- 6. NEXT STEPS***





# 1- REDD IN BURKINA FASO



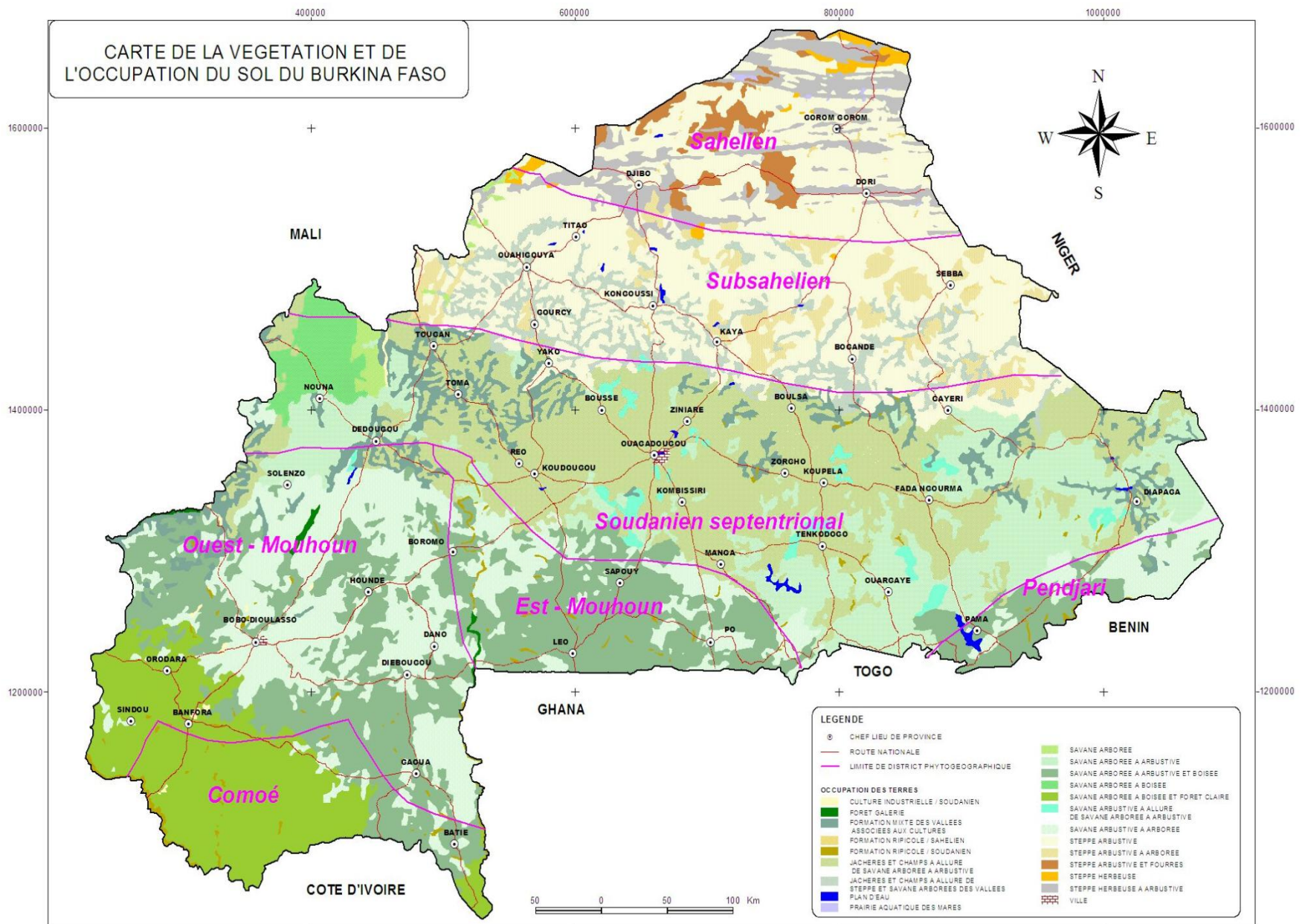
## Presentation of Burkina Faso - Context

- ❖ Burkina Faso is a landlocked country at the heart of western Africa, covering 274.000 km<sup>2</sup>.
- ❖ Population is estimated to 14,2 millions inhabitants i.e. an average density of 49 inhabitants per km<sup>2</sup>.
- ❖ The economic drivers are agriculture (57%) and animal production (25%), forestry, fisheries and hunting (17%).
- ❖ Classified forests (State private property) are covering about 3,9 million hectares, 14 % of the national territory.



# LAND USES IN BURKINA FASO (2008)

CARTE DE LA VEGETATION ET DE L'OCCUPATION DU SOL DU BURKINA FASO



**LEGENDE**

- ⊙ CHEF LIEU DE PROVINCE
- ROUTE NATIONALE
- LIMITE DE DISTRICT PHYTOGEOGRAPHIQUE

**OCCUPATION DES TERRES**

- CULTURE INDUSTRIELLE / SOUDANIE
- FORET GALERIE
- FORMATION LIMITE DES VALLEES ASSOCIEES AUX CULTURES
- FORMATION RIPICOLE / SAHELIE
- FORMATION RIPICOLE / SOUDANIE
- JACHERES ET CHAMPS A ALLURE DE SAVANE ARBOREE A ARBUSTIVE
- JACHERES ET CHAMPS A ALLURE DE STEPPE ET SAVANE ARBOREES DES VALLEES
- PLAN D'EAU
- PRAIRIE AQUATIQUE DES MARES

- SAVANE ARBOREE
- SAVANE ARBOREE A ARBUSTIVE
- SAVANE ARBOREE A ARBUSTIVE ET BOISEE
- SAVANE ARBOREE A BOISEE
- SAVANE ARBOREE A BOISEE ET FORET CLAIRE
- SAVANE ARBUSTIVE A ALLURE DE SAVANE ARBOREE A ARBUSTIVE
- SAVANE ARBUSTIVE A ARBOREE
- STEPPE ARBUSTIVE
- STEPPE ARBUSTIVE A ARBOREE
- STEPPE ARBUSTIVE ET FOURRES
- STEPPE HERBEUSE
- STEPPE HERBEUSE A ARBUSTIVE
- VILLE

Sources: Projet Campus 83 313 101 'Inventaire cartographique de la végétation et de l'occupation du sol' BND T. (IGB)

Edition cartographique: Direction du Suivi Ecologique / DGCN

Septembre 2008



# 1- REDD IN BURKINA FASO



- ❖ A clear political will.
- ❖ Legal and institutional reforms.
- ❖ Civil society is very active.
- ❖ Private sector is committed.





# 1- REDD IN BURKINA FASO



- ❖ Burkina Faso has been selected as a pilot country for the Forest Investment Program (FIP) in 2010;
  - Burkina Faso's landscape is characterized by an ecosystem representative of a mix of bio-climatic stages
  - Carbon sequestration should be considered from a landscape point of view rather than just from the point of view of forest density
  - Opportunity to demonstrate catalytic interaction between FIP and FCPF (R-PP)
- ❖ FIP is a Program aiming *inter alia* at initiating and facilitating steps towards transformational change in forest related policies and practices leading to:
  - ✓ Improving Sustainable Forest Management;
  - ✓ Reducing Carbon emissions;
  - ✓ Reducing poverty





# 1- REDD IN BURKINA FASO



- ❖ Since 2011, Burkina Faso has held consultations on REDD while preparing the FIP Investment Plan. The process was supervised by the NAPA/FIP/REDD steering committee. The recommendations of the RPP will be integrated in an update of the missions and scope of the NAPA/FIP/REDD steering committee.
- ❖ The approach Burkina Faso recognizes that forest governance is critical to addressing risks in the implementation of its FIP program. The RPP process was useful in strengthening consultation with local stakeholders particularly through a diagnostic tool developed by PROFOR. This tool was specifically customized to the Burkina Faso's context and relied on inputs from multiple stakeholders. Major weaknesses identified have been incorporated in the R-PP and will be mitigated during implementation of the FIP investment plan.



## 2-MAIN ASPECTS OF THE R-PP: The Strategy



- ❖ The strategy is designed around the following four pillars:
  1. ***Land-use planning*** that assigns the rural land-use (agriculture, livestock, mining, urban spaces, etc.) to the most appropriate spaces, thus limiting their expansion.
  2. ***Securing land rights.***
  3. ***Management of agro-sylvo-pastoral systems***, For the sustainable management of agricultural, pastoral, and forest production in the rural areas, including reforestation
  4. ***capacity building, harmonization of policies, and promoting good governance*** of natural resources and particularly forests and woodlands.
- ❖ The expected co-benefits will contribute to the national fight against poverty





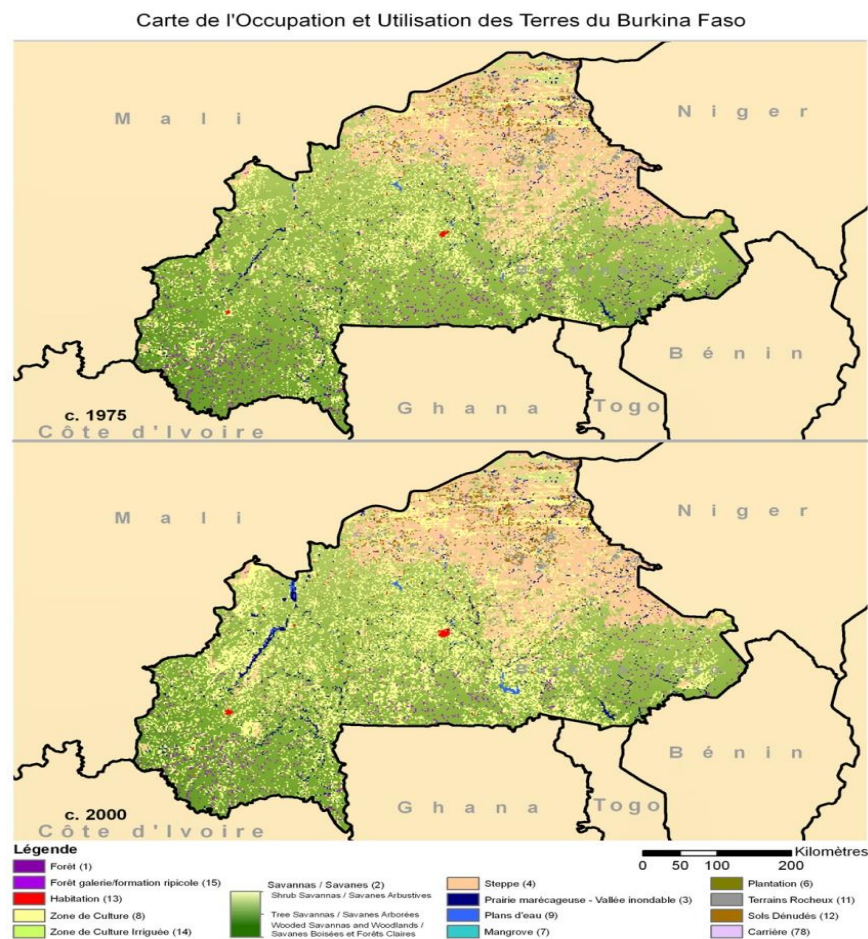
## 2-MAIN ASPECTS OF THE R-PP: The Strategy

In Burkina Faso, the drivers of Deforestation and Forest Degradation are ***complex, multiple and interdependent***:

Direct Causes	Indirect Causes
Agriculture expansion	Quick and constant growth of a poor, rural population
Overgrazing	High poverty
Need for fuel wood	Low technical capacities
Bush fires	Weak bush fire management
Over-harvesting of NTFPs	Increasing variability in rainfall patterns and temperatures, climate change
Episodic conflicts between farmers and herders	Weak funding for implementation

## 2-MAIN ASPECTS OF THE R-PP: Reference Scenario and MRV

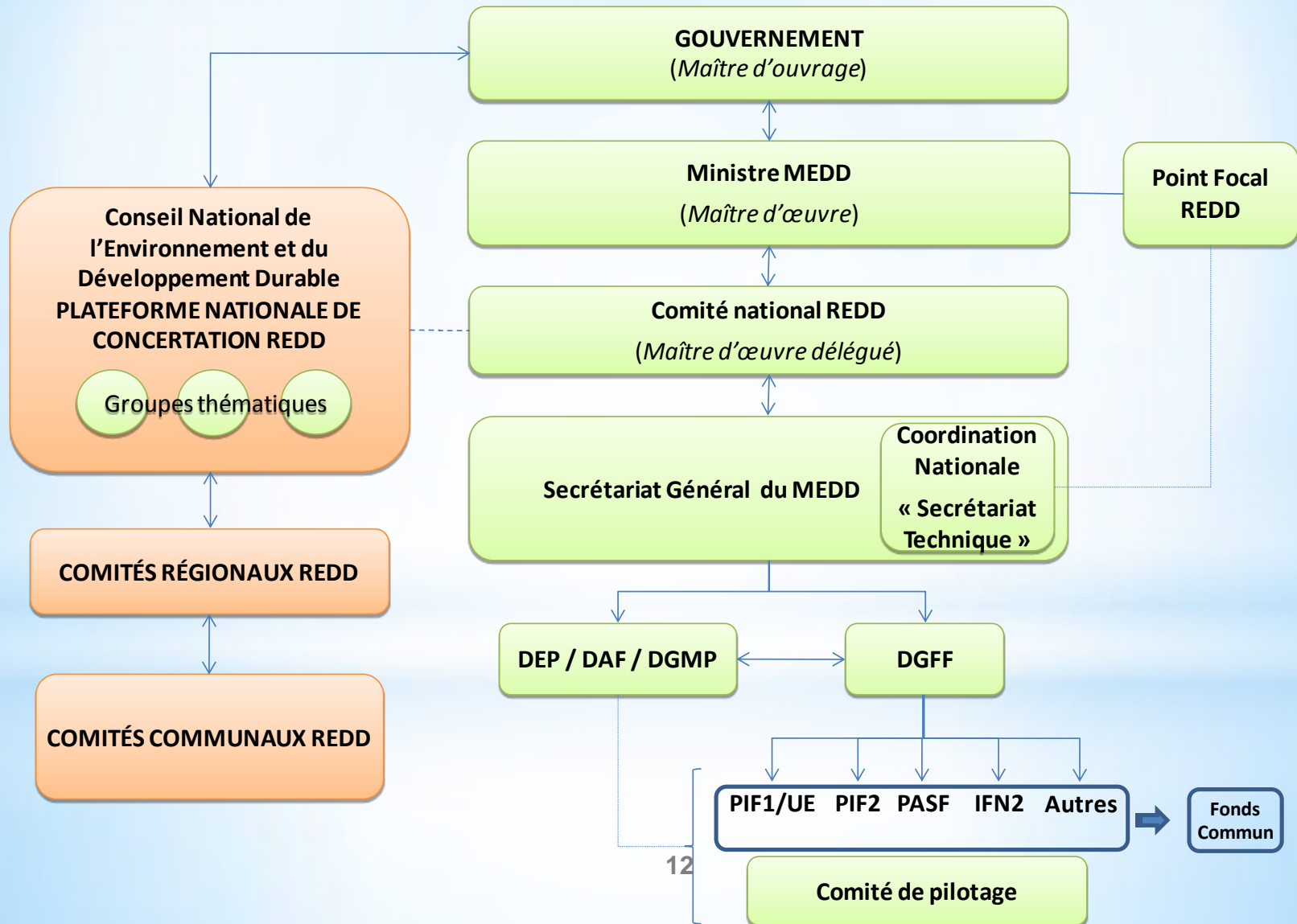
- ❖ Reference scenario is based on projections of the land use changes.
- ❖ Land uses are sorted using a classification (called the « BDOT »). Each BDOT class will be associated with a quantity of carbon.
- ❖ The MRV system will use the stock variation method, based on those mappings and on the result of the current Forest Inventory (IFN2).



## 3- INSTITUTIONAL ARRANGEMENTS

- ❖ The institutional arrangements cover both the supervision of the Readiness preparation and the overall Rural Sector Strategy implementation.
- ❖ It has 3 main parts:
  1. **The consultation structure** that starts at the village level up to the « National Plateforme » that gathers representative from private sector, civil society and administration (build on existing structures)
  2. **The overall steering** is under the responsibility of a National Committee
  3. **The Execution** will be supported by a Technical Secretariat that will overlook all the projects related to REDD (FIP, European Union, Luxembourg projects)

# 3- INSTITUTIONAL ARRANGEMENTS





## 4-ARTICULATION WITH THE FIP



- ❖ The FIP projects would finance both the implementation of the R-PP and pilot /transformational investments.
- ❖ 2 projects are expected, with 2 different approaches:
  1. one project with a National approach, focusing on SFM management of National/Regional/communal forests. Since it will mostly work with the central administration, this project would include the MRV system and the reference scenario.
  2. One project with a local approach, focusing on integrated local development, landscape management, land use planning and land management. As this project will work at local level with communities, it will include the consultation process and the strategy elaboration.



## 4-ARTICULATION WITH THE FIP



- ❖ The FIP projects would finance the implementation of the R-PP but at the same time, the investments will be influenced by the consultations and the discussions held during the R-PP preparation.
- ❖ Having the possibility to implement at the same time both the Readiness Preparation and a first wave of pilot projects is therefore a great opportunity.



## 5- SUCCESSES SO FAR



### Main success:

- ❖ The presence of Burkina Faso as a FIP pilot country is a success because it is the first initiative to address REDD + in Sahelian countries and target dry ecosystems.
- ❖ The R-PP approach, the quality of local participation and the agreement of the FCPF to review the document so that Burkina Faso gives confidence in the quality of the approach.
- ❖ This initiative is integrated into the Rural Development Programmatic approach (PNSR:PASF, FIP) and provides a coherent collaborative framework with the main financial and technical partners (BM, BAD, EU, PNUD, Luxembourg, Sweden)

## 6- NEXT STEPS

- ❖ Based on the comments received on the R-PP, and the consultations with the stakeholders, the Investment Plan of the FIP will be revised and completed to be fully consistent with the REDD+ approach.
- ❖ The FIP Investment Plan will be revised by mid July and will be submitted to the FIP sub-committee (with the R-PP as an appendix) for final approval.
- ❖ Identification of FIP investment projects will begin from September 2012.
- ❖ The projects are expected to be launched no later than early January 2013





FIN

*Merci*

*Pour votre aimable attention*